



WASHINGTON STATE

MEN'S BASKETBALL

Game Notes | Game 27 | Beasley Coliseum (11,671) | TV: ROOT NW

2011-12 SCHEDULE/RESULTS

Nov. 5	LEWIS-CLARK STATE (EXH)	W, 88-41
Nov. 14	at Gonzaga (ESPN)	L, 89-81
Nov. 17	SACRAMENTO STATE	W, 79-68
Nov. 20	at Portland	W, 83-73
Nov. 24	vs. Oklahoma& (ESPN2)	L, 74-59
Nov. 25	vs. New Mexico& (ESPNU)	L, 72-62
Nov. 27	vs. UC Riverside&	L, 64-63
Nov. 30	GRAMBLING STATE	W, 69-37
Dec. 3	EASTERN WASHINGTON (ROOT)	W, 75-49
Dec. 7	at Idaho	W, 66-64
Dec. 11	SANTA CLARA	W, 93-55
Dec. 18	WESTERN OREGON	W, 66-42
Dec. 22	Pepperdine^	W, 67-56
Dec. 29	Oregon*! (OSN)	L, 95-80
Dec. 31	Oregon State*! (ROOT)	W, 81-76
Jan. 5	at Utah*	L, 62-60 (OT)
Jan. 7	at Colorado* (FSN)	L, 71-60
Jan. 15	at Washington* (FSN)	L, 75-65
Jan. 19	STANFORD*	W, 81-69
Jan. 21	CALIFORNIA*	W, 77-75
Jan. 26	at Arizona* (FSN)	L, 85-61
Jan. 28	at Arizona State* (ROOT)	L, 71-67
Feb. 2	USC*	W, 60-53
Feb. 4	UCLA* (ROOT)	L, 63-60
Feb. 9	at Oregon State*	W, 83-73
Feb. 11	at Oregon*	L, 78-69
Feb. 16	ARIZONA* (FSN)	L, 76-72
Feb. 18	ARIZONA STATE* (ROOT)	5 p.m.
Feb. 25	WASHINGTON* (ROOT)	5 p.m.
March 1	at UCLA* (Wildcard)	TBD
March 3	at USC* (Wildcard)	TBD
March 7-10	Pac-12 Tournament%	TBD

^ - Cougar Hardwood Classic at KeyArena at Seattle
& - 76 Classic at Anaheim, Calif.

! - Played at Spokane Arena at Spokane, Wash.

* - Pac-12 Game

% - Pac-12 Tournament Played at Staples Center

Home games in BOLD

Washington State (13-13, 5-9) vs. Arizona State (8-18, 4-10)

Saturday, Feb. 18 | 5 p.m. PT | Beasley Coliseum | Pullman, Wash.

Washington State University Athletic Communications

Contact: Jessica Schmick | Work: 509-335-0255 | Cell: 509-781-0550 | jessica_schmick@wsu.edu

www.wsucougars.com

MATCHUP

WSU	CATEGORY	ASU
Pullman, Wash.	Location	Tempe, Ariz.
20,060	Enrollment	72,250
Pac-12	Conference	Pac-12
Cougars	Nickname	Sun Devils
Ken Bone	Head Coach	Herb Sendek
51-41 (3rd)	Coach's Record at School (Season)	96-93 (6th)
386-208 (20th)/128-89 (6th)	Coach's Career Record (Season)	350-251 (19th)
13-13	Overall Record	8-18
5-9	Conference Record	4-10
NR	National Ranking (AP/ESPN-USA Today)	NR
70.5	Points Per Game	60.6
67.8	Points Allowed Per Game	65.4
+2.8	Average Scoring Margin	-4.8
32.7	Rebounds Per Game	31.8
31.7	Rebounds Allowed Per Game	30.2
+1.0	Average Rebound Margin	+1.7
.472	Field Goal Percentage	.457
.431	Field Goal Percentage Defense	.425
.374	3-Point Field Goal Percentage	.354
.359	3-Point Field Goal Pct. Defense	.359
.723	Free-Throw Percentage	.665
14.2	Assists Per Game	12.1
13.7	Turnovers Per Game	16.7
12.7	Turnovers Forced Per Game	11.3
1.0	Assist/Turnover Ratio	0.7
2.5	Blocks Per Game	4.1
5.2	Steals Per Game	5.3

STARTERS LAST TIME OUT

Washington State

No.	Name	Pos.	Ht.	Wt.	Yr.	ppg	Other
12	Brock Motum	F	6-10	245	Jr.	17.8	6.7 rpg
31	Abe Lodwick	F	6-7	215	Sr.*	5.3	3.6 rpg
0	Marcus Capers	G	6-4	179	Sr.	5.3	4.5 rpg
3	DaVonté Lacy	G	6-3	206	Fr.	9.0	1.7 3pg
1	Reggie Moore	G	6-1	178	Jr.	9.7	5.7 apg

Key Reserves

2	Mike Ladd	G	6-5	195	Jr.*	5.2	2.4 rpg
11	Faisal Aden^	G	6-4	179	Sr.	14.5	.894 ft pct
23	D.J. Shelton	F	6-10	240	So.	5.0	3.2 rpg
34	Dexter Kemich-Drew	G	6-6	182	Fr.*	24	0.8 rpg
40	Charlie Enquist	F	6-10	230	Sr.*	4.3	.649 fg pct

*used redshirt season

^out for season

Arizona State

No.	Name	Pos.	Ht.	Wt.	Yr.	ppg	Other
5	Kyle Cain	F	6-7	210	So.	8.4	5.9 rpg
31	Jonathan Gilling	F	6-7	200	Fr.	6.2	1.5 rpg
13	Jordan Bachynski	C	7-2	243	So.	5.0	1.2 bpg
2	Chris Colvin	G	6-2	200	Jr.	6.4	3.0 apg
24	Trent Lockett	G	6-4	210	Sr.	13.5	6.1 rpg

Key Reserves

0	Carrick Felix	G	6-6	196	Jr.	10.3	4.3 rpg
15	Chance Creekmur	G/F	6-5	216	So.	4.4	2.2 rpg
23	Ruslan Pateev	C	7-0	249	Jr.	4.9	.565 fg pct

*used redshirt season

^out for season

SERIES INFORMATION

ASU leads the all-time series 36-34 (WSU Streak -2)

At WSU: WSU leads 21-12

At ASU: ASU leads 23-13

Neutral Site: ASU leads 1-0

Last WSU home win: 78-61, Jan. 20, 2011

Last ASU road win: 81-70, Feb. 4, 2010

Last WSU road win: 65-55, Jan. 29, 2009

Last ASU home win: 71-67, Jan. 28, 2012

Largest WSU margin of victory: 30 points (97-67), Feb. 13, 1993 (Pullman)

Largest WSU margin of defeat: 41 points (45-96), Feb. 7, 2002 (Tempe)

Most points scored:

WSU: 103 (103-78), Mar. 2, 1996 (Pullman)

ASU: 96 (45-96), Feb. 7, 2002 (Tempe); (55-96), Jan. 11, 2003 (Tempe)

Fewest points scored:

WSU: 45 (45-96), Feb. 7, 2002 (Tempe)

ASU: 43 (53-43), Jan. 8, 1982 (Tempe)

First meeting: ASU defeated WSU, 94-70, Dec. 21, 1959

at Tempe

Last meeting: ASU defeated WSU, 71-67, Jan. 28, 2012 at Tempe

BROADCAST INFORMATION

TV: ROOT Sports NW

Play-by-Play: Tom Glasgow

Color Analyst: Francis Williams

Sideline Reporter: Angie Mentink

Gametracker: www.wsucougars.com

Radio: Cougar IMG Radio Network

Play-by-Play: Bud Nameck

Centralia	KMNT-FM 104.3
Colville	KCVL-AM 1240
Moses Lake	KBSN-AM 1470
Mt. Vernon	KAPS-AM 660
Portland	KKPZ-AM 1330
Pullman	KHTR-FM104.3
Seattle	KTTH-AM 770
Spokane	KXLY-AM 920
Tri-Cities	KONA-AM 610
Walla Walla	KGDC-AM 1320
Yakima	KJOX-AM 1390
Internet	wsucougars.com
XM Satellite Radio	





COUGARS LOOK TO BOUNCE BACK AFTER CLOSE LOSS: The Washington State University men's basketball team (13-13, 5-9) welcomes the Arizona State Sun Devils (8-18, 4-10) to Pullman, Saturday, Feb. 18 at 5 p.m. in a televised event on ROOT Sports NW. WSU is seeking its 10th win of the season in Beasley Coliseum after suffering a close, four-point loss at the hands of Arizona, Thursday. Arizona State currently sits at 10th in the Pac-12, while WSU is tied with Oregon State for eighth. Saturday's game will be a 'Gray Out' as fans are encouraged to wear gray to the game. The first 3,700 fans to the game will receive a free gray t-shirt. In addition, WSU Athletics encourages all WSU Greek community members to attend the game as the Cougars celebrate 'Greek Night.' The fraternity and sorority with the most members in attendance to the game will each receive reserved seating for the Cougars' final home game against Washington next Saturday, Feb. 25 at 5 p.m. Saturday's game can be heard on the Cougar Radio Network with Bud Nameck's call. Please see the list of affiliates on page one of today's notes for more information. You can also get updates on Twitter by following @WSUHoopsBlog, the official Twitter account of Washington State men's basketball.

WSU AGAINST ARIZONA STATE:

- The Cougars hold a 34-36 record in the all-time series against Arizona State.
- WSU leads the series at Pullman, 21-12, but trails at Tempe, Ariz. 13-23...the Sun Devils lead the series 1-0 in neutral site matchups.
- The Cougars suffered their second-straight loss to Arizona State earlier this season in Tempe, Ariz., falling 71-67.
- Brock Motum scored a career-high 34 points... this marked the first time in his career that Motum reached the 30-point plateau.
- Motum made a career-high 13 field goals after attempting a career-high 19...he also went a perfect 6-for-6 from the free throw line.
- Motum's 34 points are the most by a Cougar not named Clay Thompson since Derrick Low scored 37 against Oregon, Jan. 27, 2007.
- Head coach Ken Bone is 2-4 all-time against the Sun Devils and 1-4 as the Cougars' head coach...he played and defeated Arizona State once prior to coming to arriving at WSU.
- The Cougars have won seven of their last eight matchups with the Sun Devils in Pullman, and have outscored them 517-453 in those games.
- In those eight games, WSU has held Arizona State to less than 50 points three times.

ABOUT THE COUGARS:

- Washington State suffered its second-straight loss, Thursday, falling to Arizona, 76-72 at Beasley Coliseum.
- WSU is 13-13 on the season and 5-9 in Pac-12 play, tied with Oregon State for eighth place.
- The Cougars have played 10 of their last 15 games away from Pullman, including 'home' games in Seattle (Pepperdine, Dec. 22) and Spokane (Oregon, Dec. 29 and Oregon State, Dec. 31).
- WSU is 3-7 in road games, 9-3 in home games (including a 1-1 mark in games at Spokane and an 8-2 mark at Beasley Coliseum) and 1-3 in neutral-site games.
- With the loss to Arizona Thursday, the Cougars suffered only their second loss of the season in Pullman...WSU is 3-2 in Pac-12 conference games played at Beasley Coliseum, their only two losses coming at the hands of UCLA, Feb. 4 and Arizona.
- Junior Brock Motum leads the team and ranks second in the Pac-12 with 17.8 points per game...he's scored in double figures in 24 of the team's 26 games and has reached the 20-point plateau in five of the last six games.
- Motum also ranks fourth in the league and 22nd in the nation in field goal percentage (.567/165-for-291) and sixth in rebounding in the league with 6.7 rebounds a game.
- The junior is the only player in the Pac-12 to rank in the top-eight in scoring, field goal percentage and rebounding.
- Motum is first in the conference in league games only with 21.0 points per game and is tied for fourth with 7.0 rebounds per Pac-12 outing...he is also ranked sixth in league field goal percentage with a .574 (101-for-176) clip.
- Freshman DaVonté Lacy has started 20 games for the Cougars and is fourth on the team with 9.0 points per game.
- He ranks 11th in conference with 1.7 3-pointers made per game.
- Redshirt senior Abe Lodwick played his first game this season Dec. 18 after missing the first 10 with a foot injury...he's made at least two 3-pointers in WSU's last five games and seven of the last eight games.
- He got his first start Jan. 26 at Arizona and has started every game since.

COACHING STAFF

Head Coach:..... Ken Bone, Third season
Alma Mater: Seattle Pacific, 1983
Assistant Coaches:.....
..... Curtis Allen (Washington, 2005)
..... Jeff Hironaka (Eastern Oregon, 1980)
..... Ben Johnson (Wisconsin-Green Bay, 1992)
Coordinator of Basketball Operations:.....
..... Jared Barrett (Eastern Oregon, 1998)
Operations Assistant:.....
..... Tim Marrion (Washington State, 2006)
Video Assistant:.....
..... Mike Simonson (Washington State, 2011)

PRONUNCIATION GUIDE

Faisal Aden.....Fays-UHL Aid-in
Marcus Capers.....CAPE-ers
Will Dilorio (the second 'i' is capitalized)
..... De-Oreo
Chuks Iroegbu.....Chew-ks Ee-rogue-boo
Dexter Kernich-Drew Ker-nick
DaVonté Lacy..... Duh-Von-Tay

ATHLETIC COMMUNICATIONS

Asst. Director/MBB Contact: Jessica Schmick
Office Phone: (509) 335-0255
Cell Phone: (509) 781-0550
E-Mail: jessica_schmick@wsu.edu
Student Asst./Secondary Contact..... Jim Crawford
Cell Phone: (509) 715-9788
E-Mail: j.crawford@mail.wsu.edu
Associate AD/Director: Bill Stevens
Assistant Directors: Linda Chulich, Craig
..... Lawson, Jessica Schmick, Bobby Alworth
SID Address: Bohler Athletic Complex 195
..... Pullman, WA 99164-1602
SID Fax:..... (509) 335-0267
Website:..... www.wsucougars.com

NLI EARLY SIGNING PERIOD

Brett Boese (6-7, 210, SF)
Spokane, Wash./Shadle Park HS

DeMarquise 'Que' Johnson (6-6, 190, SG)
Phoenix/Westwind Prep

Richard Longrus, Jr. (6-7, 210, F)
Oakland, Calif./Bishop O'Dowd HS

Richard Peters (6-10, 250, C)
Phoenix/Westwind Prep International

2011-12 WASHINGTON STATE ROSTER

No.	Name	Pos.	Ht.	Wt.	Yr.	Exp.	Hometown (Last School)
0	Marcus Capers	G	6-4	179	SR	3V	Winter Haven, Fla. (Montverde Academy)
1	Reggie Moore	G	6-1	178	JR	2V	Seattle, Wash. (Brewster Academy-N.H.)
2	Mike Ladd*	G	6-5	195	JR*	SQ	Seattle, Wash. (Fresno State)
3	DaVonté Lacy	G	6-3	206	FR	HS	Tacoma, Wash. (Curtis HS)
4	Chuks Iroegbu	G	6-3	200	FR	HS	Elk Grove, Calif. (Franklin HS)
5	Will Dilorio	G	6-5	190	SO	1V	Bainbridge Island, Wash. (Bainbridge HS)
11	Faisal Aden	G	6-4	179	SR	1V	San Diego, Calif. (Hillborough CC)
12	Brock Motum	F	6-10	245	JR	2V	Brisbane, Australia (Australia Institute of Sport)
21	Dominic Ballard	G	6-4	199	FR	HS	Seattle, Wash. (Bothell HS)
22	Royce Woolridge^	G	6-3	175	SO^	TR	Phoenix, Ariz. (Kansas)
23	D.J. Shelton*	F	6-10	240	SO*	TR	Rialto, Calif. (Citrus College)
31	Abe Lodwick*	F	6-7	215	SR*	3V	Bend, Ore. (Mountain View HS)
33	Dave Wink	C	6-8	245	SO	TR	Bellevue, Wash. (Sheridan College)
34	Dexter Kernich-Drew*	G	6-6	182	FR*	SQ	Melbourne, Australia (Caulfield Grammar)
40	Charlie Enquist*	F	6-10	230	SR*	3V	Edmonds, Wash. (Kings HS)
44	Patrick Simon	F	6-8	215	SO	1V	Ephrata, Wash. (Ephrata HS)

*used redshirt season ^Will redshirt this season



• Redshirt junior Mike Ladd missed WSU's games against UC Riverside, Grambling State, Eastern Washington, Idaho and Santa Clara with a sprained thumb...he then missed the games at Washington and home against Stanford and Cal and at Arizona and Arizona State after aggravating his thumb injury.

• Faisal Aden missed the Cougars' games against Eastern Washington, Idaho and Santa Clara with a concussion...he left the Arizona game in the first half with a left knee injury and did not play against Arizona State...he will miss the remainder of the season with after suffering a left ACL tear.

MOORE OF THE SAME:

- Reggie Moore has finished in the top-nine in the league in assists per game over his first two seasons (ninth last season, fifth as a freshman in 2009-10).
- This season Moore leads the league with 5.7 assists per game (32nd in the country)...he's adding a team third-best 9.7 points per game.
- He is also third in the league with a 2.3 assist/turnover ratio which ranks 45th nationally.
- Moore has now moved into the WSU single-season top-10 for assists...he is currently in seventh with 147 assists.
- Moore previously was tied for the 10th spot with Marcus Moore (2002) after dishing out 131 assists as a freshman in 2009-10).
- Moore started the season ranked 18th in the WSU record books for career assists with 226...he currently has moved into seventh with 373 assists, surpassing Marty Giovacchini (371 assists)...Taylor Rochestie is next on the list with 381 career assists.
- The Cougar season record for assists average is 6.9 apg accomplished by Donminic Ellison during the 1994-95 season...he also holds the second spot with 5.6 per game during the 1995-96 season.
- If Moore continues his 5.7 assists per game average this season, he will finish second for single season average in WSU history.

LAST OUTING:

- WSU suffered its second-straight loss, falling to Arizona at home by four points, 76-72, Thursday, Feb. 16 at Beasley Coliseum in Pullman.
- Reggie Moore finished with a season-high 21 points...his previous season-high was 16 points, scored against Santa Clara on Dec. 11.
- This is the fourth consecutive game that Moore has scored double figures.
- Moore dished out four assists in the game...he has now moved into seventh place in the WSU record book for career assists with 373, passing Marty Giovacchini with 371 assists.
- Moore also knocked down eight shots breaking his previous season-high of seven at Idaho, Dec. 7.
- Brock Motum attempted a career-high 18 free throws...his previous high was 11 set against Santa Clara Dec. 11.
- Motum scored 28 points on the night and has scored in double figures in 24 of the Cougars' 26 games this season...he has broken the 20-point plateau in five of the last six games.
- Marcus Capers led the team with seven rebounds...this is only the second time this season Capers has led the Cougars in rebounding.
- Abe Lodwick made two 3-pointers and finished with six points...he has made at least two 3-pointers in each of the last five games and seven of the last eight.

COUGS SHINE OUT OF THE SPOTLIGHT:

- Washington State's upcoming game against the Sun Devils this Saturday will be televised on ROOT Sports NW, which according to the statistics, is not a good sign for the Cougars.

- The Cougars are 2-10 in televised games this season after going 10-11 each of the previous two seasons.
- WSU is 11-3 when not televised, including 4-2 in Pac-12 play.

HOME SWEET HOME:

- The Cougars returned to Beasley Coliseum Jan. 19 for the first time since defeating Western Oregon, 66-42, on their home court, Sunday, Dec. 18.
- During that stretch WSU played six games, three of them 'home' games...it hosted Pepperdine in Seattle in the Cougar Hardwood Classic Dec. 22 and Oregon and Oregon State at Spokane Arena Dec. 29 and 31, respectively.
- The Cougars went 2-4 in those games, winning two of their first three.
- Ironically WSU donned its crimson uniforms just once during the six games and month away from Pullman...at Colorado Jan. 7.
- The Cougars wore white at Utah Jan. 5, as the Utes were having a 'Blackout' and their new gray uniforms at Washington Jan. 15.
- WSU is 11-7 in its white uniforms this season.
- WSU is 8-2 at Beasley Coliseum this season and had won its last 11 games there dating back to last season prior to falling to UCLA Feb. 4.

COUGARS RAISE MONEY FOR RYPIEN FOUNDATION:

- The Washington State men's basketball team showed its support in the fight against cancer at its home basketball game Saturday, Feb. 4 against UCLA as the WSU staff wore sneakers with their suits to support Coaches vs. Cancer.
- In addition to their work with the American Cancer Society, the Cougars worked closely with the Rypien Foundation to raise money and awareness.
- The Rypien Foundation was established by Cougar football great Mark Rypien who was the quarterback at Washington State from 1981-1985 and ranks sixth in both total offensive yards (5,101) and pass yards (4,573) in the WSU record book.
- As of Monday, WSU Athletics had raised \$1,650.83 for the Rypien Foundation by 'Passing the Shoe.'
- Each year the NABC has a nationwide campaign, Suits and Sneakers, which this season took place the week of January 22-29.
- The Cougar coaching staff wore sneakers with its suits at the WSU game Saturday, Jan. 28 at Arizona State to support the campaign.

ADEN OUT FOR THE SEASON:

- Senior Faisal Aden suffered a left Anterior Cruciate Ligament (ACL) tear in the first half of the team's game at Arizona, Thursday, Jan. 28 in Tucson, Ariz.
- He will miss the remainder of the season.
- Aden was averaging a team second-best 14.5 points a game (ninth in the Pac-12), while shooting a league-best .894 (42-for-47) from the free throw line.
- Fresh off being named the Pac-12 Player of the Week for the week of Jan. 16-22, he tallied six points and grabbed two rebounds in 11 minutes of action in the game against the Wildcats.
- He missed three games earlier this season with a concussion.

CAPERS ON PACE FOR GAMES PLAYED RECORD:

- Senior Marcus Capers has played 124 games in his WSU career, while the school record is 127 games played set by George Hamilton in 1945 and 47-49.
- Given Capers plays in all the team's games this season, he will play in his 127th game March 1 at UCLA and his record-setting 128th game in WSU's regular season finale, March 3 at USC.

WASHINGTON STATE GETS 1,500TH WIN:

- With the win at Idaho Dec. 7, Washington State notched its 1,500th win in its 109 years of existence.
- The Cougars are now 1,508-1,379 all-time for a .523 win percentage.

MOTUM & ADEN EARN PAC-12 PLAYER OF THE WEEK HONORS:

- Faisal Aden was named the Pac-12 Player of the Week for the week of Jan. 16-22.
- Aden led the Cougars to two victories that week, an 81-69 win against conference-leading Stanford (Jan. 19) and a 77-75 thriller over California (Jan. 21).
- Aden averaged 28.5 points per game and 3.5 rebounds per game over the two-game span and added two assists and two steals. He shot .655 (19-for-29) from the field and .950 (19-for-20) from the free throw line.
- In addition to being named Pac-12 Player of the Week, Aden was also honored as the Oscar Robertson National Player of the Week.
- This marks the first time a Washington State student-athlete has been honored as the Oscar Robertson National Player of the Week as Aden is the only Pac-12 player to earn the award this season.
- Brock Motum was named the Pac-12 Player of the Week for the week of Dec. 5-12.
- Motum led the Cougars to two victories that week, a 66-64 win at Idaho Wednesday (Dec. 7) and a 93-55 win over Santa Clara Sunday (Dec. 11).
- This is the first honor for both Aden and Motum...Motum became the first Cougar not named Klay Thompson to earn conference player of the week since Taylor Rochestie picked up the honor, Feb. 23, 2009.
- Motum is the first forward to pick up the accolades since Daven Harmeling, Feb. 4, 2007.
- The two honors mark Washington State's 24th and 25th all-time Player of the Week accolades.

KEN BONE IN HIS THIRD SEASON:

- WSU head coach Ken Bone holds a 51-41 record in his third season in 2011-12, and already has more wins than eight previous Cougar men's basketball coaches, six of which coached at least two seasons.
- Last season Bone led WSU to an NIT postseason appearance, making him the third-fastest Cougar coach to reach a postseason tournament.
- He also has more wins than two of the last three head coaches, 15 more than Dick Bennett (2003-06, 36-49) and 20 more than four-year head coach Paul Graham (2000-03, 31-79).

BASKETBALL GIVING BACK TO THE COMMUNITY:

- The Cougars spent the majority of the summer and fall of 2011 giving back to the community, participating in various community service activities.
- In June the team held three camps, including a day camp for kids ages 8-14.
- In July members of the Cougar basketball team participated in Palouse Habitat for Humanity and Pullman Learning Center's sports week and in August the team made appearances at the Lentil Festival's street fair and parade.
- The entire team spent time before the Cougars' Sept. 10 football game, signing autographs as part of 'family day.'
- Members of the team visited the senior center Sept. 16., the team held a free Kids' Clinic Oct. 1, members of the team helped with the YMCA's Keys to Success event and several Cougars have visited Jefferson Elementary, helping out in a second-grade classroom.



INDIVIDUAL CAREER STATISTICS VS. ARIZONA STATE

YEAR	GP -GS	MIN	AVG	FGM	FGA	FG%	3-POINT			FTM - FTA	FT%	REBOUNDS					PF	DQ	AST	TO	BLK	STL	PTS	AVG
							FGM	FGA	FG%			OFF	DEF	TOT	AVG									
CAPERS	6 --4	166	27.7	15 -- 29	.517	0 - -1	.000	9 - -19	.474	18	9	27	4.5	17	0	10	7	6	7	39	6.5			
DIIORIO	3 --0	27	9.0	0 -- 2	.000	0 - -0	.000	0 - -2	.000	1	4	5	1.7	3	0	3	1	0	2	0	0.0			
ENQUIST	3 --1	9	3.0	0 -- 0	.000	0 - -0	.000	0 - -0	.000	1	2	3	1.0	2	0	0	3	0	1	0	0.0			
KERNICH-DREW	1 ---0	12	12.0	1 ---2	.500	1 - -1	1.000	0 ---2	.000	0	1	1	1.0	1	0	0	1	0	0	3	3.0			
LACY	1 --1	31	31.0	3 -- 9	.333	3 - -8	.375	4 - -4	1.000	0	2	2	2.0	2	0	3	2	0	0	13	13.0			
LODWICK	5 --4	82	16.4	5 -- 9	.556	3 - -6	.500	2 - -2	1.000	5	9	14	2.8	13	1	4	2	1	2	15	3.0			
MOORE	5 --5	174	34.8	17 -- 48	.354	6 - 16	.375	13 -- 19	.684	5	11	16	3.2	11	1	19	7	0	4	53	10.6			
MOTUM	5 --2	71	14.2	16 -- 28	.571	2 - -4	.500	7 - -8	.875	6	7	13	2.6	5	0	3	8	0	1	41	8.2			
SHELTON	1 --0	21	21.0	1 -- 3	.333	0 - -0	.000	1 - -1	1.000	0	3	3	3.0	5	1	0	1	0	0	3	3.0			
SIMON	3 --0	18	6.0	1 -- 3	.333	1 - -3	.333	1 - -2	.500	0	2	2	0.7	3	0	0	0	0	0	4	1.3			

LAST SEASON VS. ARIZONA STATE

GAME 19 • Arizona State at Washington State

1/20/11 7 p.m. at Beasley Coliseum (Pullman, Wash.)

VISITORS: Arizona State (9-9, 1-5)

#	Player		Total		3-Ptr		Rebounds			PF	TP	A	TO	Blk	Stl	Min		
			FG	FGA	FG	FGA	FT	FTA	Off								Def	Tot
30	Kuksiks, Rihards	f	3	7	3	6	0	0	1	0	1	9	5	0	0	1	31	
23	Pateev, Ruslan	c	0	2	0	0	0	0	1	0	1	1	0	0	0	1	7	
03	Abbott, Ty	g	5	10	5	8	1	2	1	3	4	2	16	1	2	0	28	
10	McMillan, Jamelle	g	3	8	2	7	2	2	1	1	2	0	10	2	1	0	24	
24	Lockett, Trent	g	3	12	0	1	2	2	0	1	1	3	8	2	1	0	1	26
01	Hawkins, Corey		1	4	0	2	0	0	1	1	2	2	2	0	0	0	15	
05	Cain, Kyle		3	5	0	0	0	0	1	3	4	1	6	0	0	0	1	15
13	Bachynski, Jordan		1	4	0	0	3	4	0	6	6	2	5	0	1	3	0	20
21	King, Keala		1	4	0	2	3	6	4	4	8	1	5	1	2	0	1	18
25	Jackson, Marcus		0	5	0	3	0	0	0	1	1	1	0	1	2	0	1	16
TEAM									2	2	4							
Totals.....			20	61	10	29	11	16	12	22	34	14	61	12	9	3	6	200

HOME TEAM: Washington State (14-5, 4-3)

#	Player		Total		3-Ptr		FT	FTA	Rebounds			PF	TP	A TO	Blk	Stl	Min	
			FG	FGA	FG	FGA			Off	Def	Tot							
23	Casto, DeAngelo	f	11	18	0	0	3	5	2	3	5	1	25	0	2	4	0	30
31	Lodwick, Abe	f	1	1	0	0	0	0	1	6	7	4	2	1	0	1	0	25
00	Capers, Marcus	g	4	8	0	0	2	3	3	3	6	0	10	4	1	1	3	37
01	Thompson, Klay	g	7	16	5	11	3	3	1	7	8	4	22	9	4	2	3	38
03	Moore, Reggie	g	4	10	3	7	0	0	0	7	7	0	11	5	1	0	0	33
05	Dilorio, Will		0	0	0	0	0	0	0	0	0	0	0	0	0	0	0	2
12	Motum, Brock		1	2	0	0	0	0	1	1	2	1	2	0	1	0	0	14
22	Loewen, Ben		0	0	0	0	0	0	0	0	0	0	0	0	0	0	0	1
25	Winston, Jr., Dre'		1	1	0	0	0	2	0	1	1	0	2	0	2	0	0	9
40	Enquist, Charlie		0	0	0	0	0	0	0	0	0	0	0	0	0	0	0	1
44	Simon, Patrick		1	2	1	2	1	2	0	1	1	1	4	0	0	0	0	10
TEAM									2	2	4							
Totals.....			30	58	9	20	9	15	10	31	41	11	78	19	11	8	6	200

Officials: Kevin Brill, Greg Nixon, Bruce Hicks

Technical fouls: Arizona State-None. Washington State-None.

Attendance: 7157

Score by Periods 1st 2nd Total

Arizona State 31 30 61

Washington State 41 37 78

GAME 27 • Washington State at Arizona State

2/19/11 Noon at Wells Fargo Arena (Tempe, Ariz.)

VISITORS: Washington State (17-10, 7-8)

#	Player	Total		3-Ptr		Rebounds						PF	TP	A TO	Blk	Stl	Min	
		FG	FGA	FG	FGA	FT	FTA	Off	Def	Tot								
12	Motum, Brock	f	2	6	0	0	1	2	1	1	2	1	5	0	1	0	14	
23	Casto, DeAngelo	f	4	7	0	0	4	8	4	6	10	3	12	1	4	2	32	
31	Lodwick, Abe	f	3	5	3	5	2	2	3	1	4	3	11	3	1	0	2	37
00	Capers, Marcus	g	0	0	0	0	1	2	2	2	4	2	1	3	2	0	1	20
03	Moore, Reggie	g	3	9	2	4	4	7	2	1	3	4	12	2	1	0	1	36
01	Thompson, Klay		11	28	4	12	2	2	3	3	6	2	28	3	5	0	1	34
05	Dilorio, Will		0	2	0	0	0	2	1	3	4	3	0	3	1	0	2	20
25	Winston, Jr., Dre'		0	0	0	0	0	0	0	0	0	0	0	0	0	0	0	3
44	Simon, Patrick		0	0	0	0	0	0	0	0	0	1	0	0	0	0	0	4
TEAM																		
Totals.....			23	57	9	21	14	25	16	17	33	19	69	15	15	2	8	200

HOME TEAM: Arizona State (10-16, 2-12)

##	Player		Total		3-Ptr		Rebounds			PF	TP	A TO	Blk	Stl	Min			
			FG	FGA	FG	FGA	FT	FTA	Off							Def	Tot	
05	Cain, Kyle	f	3	3	0	0	0	0	1	5	6	3	6	1	2	1	0	27
15	Creekmur, Chanse	f	6	9	5	8	1	2	1	2	3	4	18	2	0	0	1	33
01	Hawkins, Corey	g	1	6	1	5	0	0	1	2	3	3	3	6	3	0	2	29
10	McMillan, Jamelle	g	3	8	1	6	1	1	0	3	3	1	8	2	3	0	3	34
24	Lockett, Trent	g	6	10	1	1	7	9	1	7	8	4	20	2	5	1	0	33
00	Felix, Carrick		1	2	0	1	0	0	0	1	1	2	2	1	2	0	0	14
13	Bachynski, Jordan		0	0	0	0	0	0	0	0	0	1	0	0	0	0	1	7
21	King, Keala		2	6	1	3	5	6	0	4	4	3	10	2	1	0	2	17
23	Pateev, Ruslan		2	3	0	0	0	0	0	0	0	3	4	0	2	1	0	6
TEAM																		
Totals.....			24	47	9	24	14	18	6	25	31	24	71	16	18	3	9	200

Officials: Deron White, Glen Mayberry, Kurt Walker

Technical fouls: Washington State-Casto, DeAngelo. Arizona State-King, Keala.

Attendance: 5153

Score by Periods 1st 2nd Total

Washington State 28 41 69

Arizona State 40 31 71



WASHINGTON STATE HEAD COACH KEN BONE



THIRD SEASON
SEATTLE PACIFIC, 1983
RECORD AT WSU: 51-41, 20-30
CAREER RECORD/D-I ONLY: 385-208/128-90

COACHING EXPERIENCE:

1982-83	Shorewood (WA) High School – Asst. Coach
1983-84	Cal State Stanislaus – Assistant Coach
1984-85	Cal State Stanislaus – Head Coach
1985-86	Olympic Junior College – Head Coach
1986-90	Seattle Pacific – Assistant Coach
1990-2002	Seattle Pacific – Head Coach
2002-05	University of Washington – Assistant Coach
2005-09	Portland State – Head Coach
2009-present	Washington State – Head Coach

BONE VS OPPONENTS AS DI HEAD COACH

	At WSU	Overall
Air Force	1-0	1-0
Akron		1-0
Alaska Anchorage	1-0	1-0
Arizona	2-4	2-4
Arizona State	1-4	2-4
Arkansas		0-1
Baylor	1-0	1-1
Bethune-Cookman		1-0
Boise State		1-0
Butler	0-1	0-1
UC Davis		1-1
UCLA	0-4	0-5
UC Riverside	0-1	0-1
California	2-3	2-3
Cal Poly		1-2
Cal State Fullerton		1-1
Cal State Northridge		0-1
Colorado	0-1	0-1
Colorado State		0-1
Eastern Washington	2-0	6-5
Evergreen State		1-0
Fresno State	1-0	1-0
Gonzaga	1-1	2-4
Grambling State	1-0	1-0
Hampton		0-1
Howard		2-0
Idaho	2-0	5-0
Idaho State		8-2
Iona		0-1
Iowa State		0-1
IPFW	1-0	1-0
IUPUI		1-0
Kansas		0-1
Kansas State	0-2	0-2
Lehigh		1-0
Lewis and Clark		3-0
Linfield		1-0
LSU		1-0
Long Beach State	1-0	1-0

	At WSU	Overall
Middle Tennessee State		0-1
Mississippi State	1-0	1-0
Mississippi Valley State	1-0	1-0
Montana		5-3
Montana State		7-3
Nicholls State	1-0	1-0
New Mexico	0-1	0-1
Northern Arizona		6-3
Northern Colorado		6-0
Northern Illinois		1-0
Northwestern	1-0	1-0
Oklahoma	0-1	0-1
Oklahoma State	1-0	1-0
Oregon	1-6	2-7
Oregon State	5-1	5-2
Pacific Lutheran		1-0
Pepperdine	1-0	1-0
Portland	2-0	5-1
Portland State	1-0	1-0
Rice		1-0
Sacramento State	2-0	7-3
San Diego	1-0	1-0
San Jose State		1-1
Santa Clara	2-0	2-0
Seattle		2-0
Southern	1-0	1-0
USC	4-1	4-1
Stanford	3-2	3-2
Texas Southern		1-0
Texas-Pan American	1-0	1-0
Utah	0-1	0-1
Utah Valley State		2-0
Warner Pacific		1-0
Washington	2-4	2-7
Washington State		0-1
Weber State		3-6
Western Oregon	1-0	1-0
Wichita State	0-1	0-1
Xavier		0-1

KEN BONE YEAR-BY-YEAR

AS A DIVISION I HEAD COACH

Year	School	Overall			Conference			Conference Tournament	NCAA Tournament	NIT Tournament
		W	L	Pct.	W	L	Finish			
2005-06	Portland State	12	16	.428	5	9	T-5th	Quarterfinals	--	--
2006-07	Portland State	19	13	.594	9	7	4th	Semifinals	--	--
2007-08	Portland State	23	10	.697	14	2	1st	Champion	First Round	--
2008-09	Portland State	23	10	.697	11	5	T-2nd	Champion	First Round	--
2009-10	Washington St.	16	15	.516	6	12	10th	First Round	--	--
2010-11	Washington St.	22	13	.629	9	9	6th	Quarterfinals	--	Semifinals
2011-12	Washington St.	13	13	.500	5	9	--	--	--	--
Totals	7 Seasons	128	90	.587	59	53				

AS A DIVISION II HEAD COACH

Year	School	Overall			Conference			NCAA Tournament
		W	L	Pct.	W	L	Finish	
1990-91	Seattle Pacific	17	10	.630	5	3	T-1st	--
1991-92	Seattle Pacific	23	8	.742	7	3	T-1st	--
1992-93	Seattle Pacific	21	9	.700	7	3	T-3rd	--
1993-94	Seattle Pacific	18	10	.643	6	6	T-3rd	First Round
1994-95	Seattle Pacific	20	9	.690	9	3	1st	Third Round
1995-96	Seattle Pacific	23	6	.793	9	3	T-1st	Third Round
1996-97	Seattle Pacific	18	9	.667	6	6	T-3rd	--
1997-98	Seattle Pacific	18	12	.600	7	5	T-2nd	Third Round
1998-99	Seattle Pacific	23	8	.742	12	6	T-3rd	Third Round
1999-00	Seattle Pacific	27	5	.844	12	2	1st	Semifinal
2000-01	Seattle Pacific	21	6	.777	14	4	2nd	First Round
2001-02	Seattle Pacific	24	5	.828	15	3	T-1st	Second Round
Totals	12 Seasons	253	97	.723	109	74		

WHEN WSU...

	2011-12	2010-11	2009-10
Played an overtime game	0-1	1-2	1-2
Played a live television game	2-11	10-11	10-11
Led at the half	10-4	18-3	13-4
Trailed at the half	3-9	4-10	2-10
Was tied at the half		0-0	1-0
Shot under 40 % FG	0-3	2-4	2-6
Shot 40-44 % FG	2-3	8-5	3-5
Shot 45-49 % FG	2-5	2-4	1-2
Shot 50 % or better FG	9-2	13-0	10-2
Opp. Shot under 40 % FG	5-1	17-3	8-1
Opp. Shot 40-44 % FG	5-3	3-2	4-1
Opp. Shot 45-49 % FG	3-4	2-2	2-5
Opp. Shot 50 % or better FG	0-5	0-6	2-7
Made 0-4 three-pointers	2-1	4-7	5-6
Made 5-7 three-pointers	9-6	5-3	9-5
Made 8 or more three-pointers	2-6	13-3	2-4
Shot more FTs than its opp.	11-5	14-4	14-8
Shot less FTs than its opp.	1-8	6-8	1-6
Shot same FTs as its opp.	1-0	2-1	1-1
Had more rebounds than opp.	9-4	10-3	12-4
Had less rebounds than opp.	2-7	12-9	3-10
Had the same rebounds as opp.	1-3	0-0	1-1
Had less than 10 TOs	1-0	3-3	3-1
Had 10-15 TOs	8-9	15-11	9-10
Had more than 15 TOs	4-4	4-0	4-4
Opp. committed less than 10 TOs	2-3	2-1	1-2
Opp. committed 10-15 TOs	8-8	12-8	11-6
Opp. committed more than 15 TOs	2-2	8-4	3-7
Scored less than 50 points		0-2	0-1
Scored 50-59 points	0-1	0-3	1-4
Scored 60-69 points	5-9	4-4	3-5
Scored 70-79 points	3-2	6-2	7-2
Scored 80-89 points	4-1	12-2	2-3
Scored 90 or more points	1-0	3-0	0-0
Allowed less than 50 points	3-0	2-0	1-0
Allowed 50-59 points	3-0	6-1	1-2
Allowed 60-69 points	3-3	6-4	10-1
Allowed 70-79 points	4-7	7-4	4-5
Allowed 80-89 points	0-2	1-4	0-4
Allowed 90 or more points	0-1	0-3	0-0
Played a day game	5-6	3-4	5-5
Played a night game	8-7	19-7	11-10
Played Sunday	3-2	3-0	0-1
Played Monday	0-1	1-0	1-0
Played Tuesday		3-1	1-0
Played Wednesday	2-0	4-1	2-2
Played Thursday	5-5	4-5	2-6
Played Friday	0-1	2-2	3-0
Played Saturday	3-4	5-4	7-6
Played in November	3-4	5-0	6-0
Played in December	6-1	5-4	4-3
Played in January	2-5	5-2	4-4
Played in February	2-3	3-4	2-5
Played in March		4-3	0-3
Wore its white uniform	10-7	9-3	9-5
Wore its gray uniforms	1-2	7-2	4-1
Wore its crimson uniform	2-4	6-7	3-9



#0

MARCUS CAPERS

Guard | 6-4 | 179 | Senior
Winter Haven, Fla. | Montverde Academy

2011-12 GAME-BY-GAME STATISTICS

Opponent	Date	GS	Min	FG	FGA	Pct	3FG	FGA	Pct	FT	FTA	Pct	Off	Def	Tot	Avg	PF	FO	A TO	Blk	Stl	Pts	Avg		
at Gonzaga	11/14/11	*	25	2	4	.500	0	0	.000	2	4	.500	1	2	3	3.0	4	0	1	1	2	6	6.0		
SACRAMENTO STATE	11/17/11	*	23	1	4	.250	0	0	.000	3	4	.750	0	3	3	3.0	1	0	2	1	0	1	5	5.5	
at Portland	11/20/11	*	28	2	3	.667	0	0	.000	2	2	1.000	0	1	1	2.3	3	0	0	1	2	6	5.7		
vs Oklahoma	11/24/11	*	19	3	4	.750	1	1	1.000	0	0	.000	2	1	3	2.5	1	0	1	1	1	7	6.0		
vs New Mexico	11/25/11	*	22	0	1	.000	0	0	.000	0	0	.000	0	3	3	2.6	4	0	0	1	0	0	4	4.8	
vs UC Riverside	11/27/11	*	25	1	3	.333	0	0	.000	0	2	.000	1	4	5	3.0	2	0	1	1	1	0	2	4.3	
GRAMBLING STATE	11/30/11	*	26	2	3	.667	0	0	.000	1	2	.500	2	4	6	3.4	2	0	4	1	0	1	5	4.4	
EASTERN WASHINGTON	12/03/11	*	27	1	3	.333	0	0	.000	1	1	1.000	0	6	6	3.8	3	0	3	1	1	3	4.3		
at Idaho	12/07/11	*	34	3	6	.500	0	0	.000	2	2	1.000	3	4	7	4.1	2	0	1	0	2	8	4.7		
SANTA CLARA	12/11/11	*	32	2	3	.667	0	0	.000	4	7	.571	2	0	2	3.9	1	0	5	3	0	1	8	5.0	
WESTERN OREGON	12/18/11	*	24	4	4	1.000	0	0	.000	1	2	.500	2	3	5	4.0	1	0	1	2	0	0	9	5.4	
vs Pepperdine	12/22/11	*	28	2	3	.667	0	0	.000	1	2	.500	0	4	4	4.0	2	0	1	2	1	1	5	5.3	
OREGON	12/29/11	*	27	2	4	.500	0	0	.000	0	0	.000	1	2	3	3.9	5	1	2	0	2	0	4	5.2	
OREGON STATE	12/31/11	*	32	2	3	.667	0	0	.000	6	8	.750	1	4	5	4.0	2	0	4	1	0	1	10	5.6	
at Utah	01/05/12	*	35	0	1	.000	0	1	.000	1	2	.500	0	3	3	3.9	2	0	1	1	0	1	1	5.3	
at Colorado	01/07/12	*	31	3	4	.750	0	0	.000	1	2	.500	4	3	7	4.1	0	0	0	1	0	0	7	5.4	
at Washington	01/15/12	*	30	2	2	1.000	0	0	.000	1	1	1.000	1	2	3	4.1	4	0	3	2	1	0	5	5.4	
STANFORD	01/19/12	*	21	1	3	.333	0	0	.000	3	4	.750	0	5	5	4.1	4	0	2	1	0	1	5	5.3	
CALIFORNIA	01/21/12	*	31	1	2	.500	0	0	.000	4	4	1.000	0	2	2	4.0	1	0	2	1	1	3	6	5.4	
at Arizona	01/26/12	*	31	1	2	.500	0	1	.000	0	0	.000	1	3	4	4.0	4	0	2	3	0	0	2	5.2	
at Arizona State	01/28/12	*	33	2	4	.500	0	0	.000	1	2	.500	4	2	6	4.1	4	0	2	3	1	0	5	5.2	
USC	02/02/12	*	32	1	3	.333	0	0	.000	0	0	.000	3	5	8	4.3	0	0	2	1	0	0	2	5.0	
UCLA	02/04/12	*	24	0	3	.000	0	0	.000	0	0	.000	3	4	7	4.4	3	0	0	2	0	0	0	4.8	
at Oregon State	02/09/12	*	33	5	6	.833	0	0	.000	2	2	1.000	3	3	6	4.5	3	0	1	4	1	0	12	5.1	
at Oregon	02/11/12	*	25	3	5	.600	0	0	.000	3	4	.750	4	0	4	4.4	3	0	1	2	0	3	9	5.3	
ARIZONA	02/16/12	*	28	3	4	.750	0	0	.000	0	0	.000	3	4	7	4.5	5	1	2	0	1	0	6	5.3	
Totals			26	726	49	87	.563	1	3	.333	39	57	.684	41	77	118	4.5	66	2	44	37	18	18	138	5.3

CAPERS'S CAREER/SEASON HIGHS

Minutes	
Career	44 vs. UCLA, 3/5/11
Season	35 at Utah, 1/5/12
Pac-12	44 vs. UCLA, 3/5/11
Points	
Career	16 vs. Oregon (Los Angeles), 3/10/10
Season	12 at Oregon State, 2/9/12
Pac-12	13 (twice) vs. Oregon, 1/8/11
Field Goals Made	
Career	8 vs. Oregon (Los Angeles), 3/10/10
Season	5 at Oregon State, 2/9/12
Pac-12	5 (three times) at Oregon State, 2/9/12
Field Goal Attempts	
Career	14 vs. Oregon (Los Angeles), 3/10/10
Season	6 (twice) at Oregon State, 2/9/12
Pac-12	9 at Arizona, 1/8/10
3-Pt Field Goals Made	
Career	1 (twice) vs. Oklahoma (Anaheim), 11/24/11
Season	1 vs. Oklahoma (Anaheim), 11/24/11
Pac-12	None
3-Pt Field Goal Attempts	
Career	2 vs. Sacramento State, 11/30/10
Season	1 vs. Oklahoma (Anaheim), 11/24/11
Pac-12	1 (four times) at USC, 12/31/10
Free Throws Made	
Career	8 vs. Oregon State, 1/6/11
Season	6 vs. Oregon State (Spokane), 12/31/11
Pac-12	8 vs. Oregon State, 1/6/11
Free Throws Attempted	
Career	12 vs. Oregon State, 1/6/11
Season	8 vs. Oregon State (Spokane), 12/31/11
Pac-12	12 vs. Oregon State, 1/6/11
Rebounds	
Career	15 vs. Southern, 11/13/10
Season	8 vs. USC, 2/2/12
Pac-12	10 vs. Oregon State, 1/2/10
Assists	
Career	6 (three times) vs. Sacramento State, 11/30/10
Season	5 vs. Santa Clara, 12/11/11
Pac-12	6 vs. Arizona, 2/26/09
Blocks	
Career	4 at California, 2/13/10
Season	2 (four times) vs. Oregon (Spokane), 12/29/11
Pac-12	4 at California, 2/13/10
Steals	
Career	5 vs. Washington, 2/27/10
Season	3 (twice) at Oregon, 2/11/12
Pac-12	5 vs. Washington, 2/27/10
Most Recent Occurrences Noted	

MISC. STATS

Category	Season	Career
Double-Figure Scoring	2	15
Double-Figure Rebounding	0	2
Double-Doubles	0	1
Triple-Doubles	0	0
Led WSU in Scoring	1	1
Led WSU in Rebounding	2	12
20+ Point Games	0	0
30+Point Games	0	0

CAREER STATISTICS

YEAR	GP - GS	MIN	AVG	FGM	FGA	FG%	3-POINT			FTM	FTA	FT%	REBOUNDS				PF	DQ	AST	TO	BLK	STL	PTS	AVG
							FGM	FGA	FG%				OFF	DEF	TOT	AVG								
2008-09	32 - 9	503	15.7	20	- 69	.290	0	- 7	.000	13	- 22	.591	9	64	73	2.3	56	2	41	27	9	6	53	1.7
2009-10	31 - 28	826	26.6	81	- 145	.559	0	- 0	.000	51	- 83	.614	49	77	126	4.1	84	2	43	41	22	26	213	6.9
2010-11	35 - 35	1021	29.2	72	- 136	.529	1	- 8	.125	58	- 86	.674	49	106	155	4.4	78	2	67	33	21	26	203	5.8
2011-12	26 - 26	726	27.9	49	- 87	.563	1	- 3	.333	39	- 57	.684	41	77	118	4.5	66	2	44	37	18	18	138	5.3
TOTAL	124 - 98	3076	24.8	222	- 437	.508	2	- 18	.111	161	- 248	.649	148	324	472	3.8	284	8	195	138	70	76	607	4.9



#1

REGGIE MOORE

Guard | 6-1 | 178 • Junior

Seattle, Wash. | Rainier Beach HS/Brewster Academy-N.H.

2011-12 GAME-BY-GAME STATISTICS

Opponent	Date	GS	Min	FG	FGA	Pct	3FG	FGA	Pct	FT	FTA	Pct	Off	Def	Tot	Avg	PF	FO	A	TO	BLK	STL	Pts	Avg
at Gonzaga	11/14/11	*	31	3	7	.429	1	2	.500	7	8	.875	0	0	0	0.0	3	0	5	4	0	3	14	14.0
SACRAMENTO STATE	11/17/11		28	0	3	.000	0	2	.000	3	6	.500	0	1	1	0.5	2	0	4	0	0	1	3	8.5
at Portland	11/20/11	*	33	2	6	.333	0	0	.000	2	4	.500	0	6	6	2.3	5	1	8	3	0	3	6	7.7
vs Oklahoma	11/24/11	*	31	1	4	.250	0	0	.000	2	2	1.000	0	3	3	2.5	1	0	3	6	0	1	4	6.8
vs New Mexico	11/25/11	*	38	3	12	.250	2	6	.333	1	3	.333	0	4	4	2.8	1	0	8	3	0	1	9	7.2
vs UC Riverside	11/27/11	*	36	5	10	.500	0	1	.000	0	0	.000	0	3	3	2.8	2	0	5	3	0	0	10	7.7
GRAMBLING STATE	11/30/11	*	26	1	4	.250	1	3	.333	2	2	1.000	0	4	4	3.0	0	0	7	1	1	2	5	7.3
EASTERN WASHINGTON	12/03/11	*	33	6	9	.667	2	3	.667	1	2	.500	0	3	3	3.0	2	0	4	9	1	0	15	8.3
at Idaho	12/07/11	*	34	7	17	.412	1	6	.167	0	0	.000	0	2	2	2.9	4	0	7	3	0	0	15	9.0
SANTA CLARA	12/11/11	*	31	6	8	.750	1	1	1.000	3	3	1.000	0	1	1	2.7	0	0	5	2	0	0	16	9.7
WESTERN OREGON	12/18/11	*	23	1	3	.333	1	3	.333	3	4	.750	0	3	3	2.7	1	0	4	1	0	1	6	9.4
vs Pepperdine	12/22/11	*	29	1	5	.200	1	1	1.000	0	0	.000	0	5	5	2.9	1	0	6	2	0	0	3	8.8
OREGON	12/29/11	*	31	4	12	.333	1	3	.333	5	6	.833	1	0	1	2.8	0	0	4	2	0	1	14	9.2
OREGON STATE	12/31/11	*	35	3	5	.600	0	1	.000	2	2	1.000	0	1	1	2.6	3	0	9	1	0	1	8	9.1
at Utah	01/05/12	*	33	3	11	.273	1	2	.500	1	1	1.000	0	4	4	2.7	2	0	3	2	0	1	8	9.1
at Colorado	01/07/12		27	5	12	.417	3	5	.600	1	2	.500	0	2	2	2.7	2	0	4	0	0	2	14	9.4
at Washington	01/15/12	*	38	2	7	.286	1	4	.250	2	4	.500	0	2	2	2.6	2	0	8	3	0	0	7	9.2
STANFORD	01/19/12	*	34	4	6	.667	2	2	1.000	3	4	.750	0	2	2	2.6	1	0	4	1	0	0	13	9.4
CALIFORNIA	01/21/12	*	30	0	4	.000	0	1	.000	0	0	.000	0	1	1	2.5	1	0	7	4	0	2	0	8.9
at Arizona	01/26/12	*	33	2	6	.333	1	2	.500	4	6	.667	0	1	1	2.5	3	0	4	3	0	0	9	9.0
at Arizona State	01/28/12	*	38	3	10	.300	1	2	.500	2	2	1.000	1	2	3	2.5	2	0	8	2	0	2	9	9.0
USC	02/02/12	*	35	3	10	.300	0	2	.000	3	5	.600	0	4	4	2.5	1	0	6	4	0	0	9	9.0
UCLA	02/04/12	*	35	4	8	.500	2	3	.667	2	2	1.000	0	2	2	2.5	2	0	3	1	0	1	12	9.1
at Oregon State	02/09/12	*	38	2	11	.182	1	5	.200	5	8	.625	0	1	1	2.5	2	0	11	2	0	4	10	9.1
at Oregon	02/11/12	*	38	5	13	.385	2	7	.286	0	0	.000	0	1	1	2.4	3	0	6	2	1	1	12	9.2
ARIZONA	02/16/12	*	33	8	13	.615	1	3	.333	4	4	1.000	1	1	2	2.4	2	0	4	1	1	2	21	9.7
Totals			24	851	84	.216	.389	26	70	.371	58	80	.725	3	59	62	2.4	48	1	14765	4	29	252	9.7

MOORE'S
CAREER/SEASON HIGHS

Minutes	
Career	45 vs. LSU (Seattle), 12/22/09
Season	38 (four times) at Oregon, 2/11/12
Pac-12	42 at California, 1/13/11
Points	
Career	25 vs. California, 1/14/10
Season	21 vs. Arizona, 2/16/12
Pac-12	25 vs. California, 1/14/10
Field Goals Made	
Career	9 at UCLA, 1/23/10
Season	8 vs. Arizona, 2/16/12
Pac-12	9 at UCLA, 1/23/10
Field Goal Attempts	
Career	17 (twice) at Idaho, 12/7/11
Season	17 at Idaho, 12/7/11
Pac-12	17 at UCLA, 1/23/10
3-Pt Field Goals Made	
Career	6 at UCLA, 1/23/10
Season	3 at Colorado, 1/7/11
Pac-12	6 at UCLA, 1/23/10
3-Pt Field Goal Attempts	
Career	10 at UCLA, 1/23/10
Season	7 at Oregon, 2/11/12
Pac-12	10 at UCLA, 1/23/10
Free Throws Made	
Career	12 at Kansas State, 12/5/09
Season	7 at Gonzaga, 11/14/11
Pac-12	10 (twice) at Oregon State, 3/4/10
Free Throws Attempted	
Career	15 at Kansas State, 12/5/09
Season	8 at Gonzaga, 11/14/11
Pac-12	14 at Arizona, 1/8/10
Rebounds	
Career	7 (twice) vs. Arizona State, 1/20/11
Season	6 at Portland, 11/20/11
Pac-12	7 (twice) vs. Arizona State, 1/20/11
Assists	
Career	12 vs. Portland State (Kennewick), 12/19/09
Season	11 at Oregon State, 2/9/12
Pac-12	11 at Oregon State, 2/9/12
Blocks	
Career	1 (four times) vs. Arizona, 2/16/12
Season	1 (four times) vs. Arizona, 2/16/12
Pac-12	1 (twice) vs. Arizona, 2/16/12
Steals	
Career	6 vs. San Diego, 11/28/09
Season	4 at Oregon State, 2/9/12
Pac-12	4 (twice) at Oregon State, 2/9/12
Most Recent Occurrences Noted	

MISC. STATS

Category	Season	Career
Double-Figure Scoring	11	50
Double-Figure Rebounding	0	0
Double-Doubles	1	2
Triple-Doubles	0	0
Led WSU in Scoring	1	9
Led WSU in Rebounding	1	1
20+ Point Games	1	5
30+ Point Games	0	0

CAREER STATISTICS

YEAR	GP - GS	MIN	AVG	FGM	FGA	FG%	3-POINT			FTM	FTA	FT%	REBOUNDS				PF	DQ	AST	TO	BLK	STL	PTS	AVG
							FGM	FGA	FG%				OFF	DEF	TOT	AVG								
2009-10	31 - 30	1007	32.5	106 -	-254	.417	28-	87	.322	154 -	194	.794	17	56	73	2.4	56	2	131	88	0	42	394	12.7
2010-11	28 - 26	919	32.8	69 -	-196	.352	28-	76	.368	89 -	119	.748	15	68	83	3.0	47	1	95	57	1	23	255	9.1
2011-12	26 - 24	851	32.7	84 -	-216	.389	26-	70	.371	58 -	-80	.725	3	59	62	2.4	48	1	147	65	4	29	252	9.7
TOTAL	85 - 80	2777	32.7	259 -	-666	.389	82-	233	.352	301 -	393	.766	35	183	218	2.6	151	4	373	210	5	94	901	10.6



#2

MIKE LADD
Guard | 6-5 | 190 | Junior
Seattle, Wash. • Fresno State

2011-12 GAME-BY-GAME STATISTICS

Opponent	Date	GS	Min	FG	FGA	Pct	3FG	FGA	Pct	FT	FTA	Pct	Off	Def	Tot	Avg	PF	FO	A TO	Blk Stl	Pts	Avg		
at Gonzaga	11/14/11		25	4	9	.444	2	5	.400	3	4	.750	0	0	0	0.0	4	0	1	0	2	13	13.0	
SACRAMENTO STATE	11/17/11	*	20	0	6	.000	0	4	.000	1	2	.500	1	3	4	2.0	3	0	2	0	0	1	7.0	
at Portland	11/20/11		18	3	8	.375	1	4	.250	1	1	1.000	1	1	2	2.0	4	0	0	1	0	8	7.3	
vs Oklahoma	11/24/11		13	1	3	.333	1	2	.500	0	0	.000	0	2	2	2.0	2	0	0	2	0	3	6.3	
vs New Mexico	11/25/11		5	0	0	.000	0	0	.000	0	2	.000	0	1	1	1.8	0	0	0	0	0	0	5.0	
vs. UC Riverside	11/27/11								--Did Not Play (thumb)--															
GRAMBLING STATE	11/30/11								--Did Not Play (thumb)--															
EASTERN WASHINGTON	12/03/11								--Did Not Play (thumb)--															
at Idaho	12/07/11								--Did Not Play (thumb)--															
SANTA CLARA	12/11/11								--Did Not Play (thumb)--															
WESTERN OREGON	12/18/11		15	2	3	.667	2	2	1.000	0	0	.000	0	3	3	2.0	4	0	0	2	0	6	5.2	
vs Pepperdine	12/22/11		15	0	3	.000	0	1	.000	1	2	.500	0	1	1	1.9	2	0	0	0	0	1	4.6	
OREGON	12/29/11		15	1	2	.500	0	1	.000	2	4	.500	0	1	1	1.8	0	0	4	0	0	4	4.5	
OREGON STATE	12/31/11		13	3	7	.429	0	0	.000	1	1	1.000	0	3	3	1.9	1	0	0	1	0	7	4.8	
at Utah	01/05/12		22	0	1	.000	0	0	.000	1	3	.333	1	3	4	2.1	2	0	1	0	0	1	4.4	
at Colorado	01/07/12		8	0	2	.000	0	1	.000	0	2	.000	0	1	1	2.0	3	0	0	0	0	0	4.0	
at Washington	01/15/12								--Did Not Play (thumb)--															
STANFORD	01/19/12								--Did Not Play (thumb)--															
CALIFORNIA	01/21/12								--Did Not Play (thumb)--															
at Arizona	01/26/12								--Did Not Play (thumb)--															
at Arizona State	01/28/12								--Did Not Play (thumb)--															
USC	02/02/12		24	1	3	.333	0	0	.000	4	4	1.000	0	4	4	2.2	1	0	1	2	0	6	4.2	
UCLA	02/04/12		31	2	8	.250	1	2	.500	5	6	.833	0	3	3	2.2	4	0	3	3	0	10	4.6	
at Oregon State	02/09/12		18	1	4	.250	0	0	.000	3	4	.750	0	4	4	2.4	4	0	1	1	0	5	4.6	
at Oregon	02/11/12		25	6	8	.750	1	2	.500	0	0	.000	0	2	2	2.3	1	0	0	1	0	13	5.2	
ARIZONA	02/16/12		20	2	3	.667	1	2	.500	0	0	.000	1	2	3	2.4	5	1	0	3	0	5	5.2	
Totals			1	287	26	70	.371	9	26	.346	22	35	.629	4	34	38	2.4	40	1	13	16	1	83	5.2

LADD'S
CAREER/SEASON HIGHS

Minutes	
Career	40 at NMSU, 2/14/09^
Season	31 vs. UCLA, 2/4/12
Pac-12	31 vs. UCLA, 2/4/12
Points	
Career	22 at NMSU, 2/14/09^
Season	13 (twice) at Oregon, 2/11/12
Pac-12	13 at Oregon, 2/11/12
Field Goals Made	
Career	9 at NMSU, 2/14/09^
Season	6 at Oregon, 2/11/12
Pac-12	6 at Oregon, 2/11/12
Field Goal Attempts	
Career	19 at NMSU, 2/14/09^
Season	9 at Gonzaga, 11/14/11
Pac-12	8 (twice) at Oregon, 2/11/12
3-Pt Field Goals Made	
Career	5 vs. San Jose State, 1/11/10^
Season	2 at Gonzaga, 11/14/11
Pac-12	1 (three times) vs. Arizona, 2/16/12
3-Pt Field Goal Attempts	
Career	10 vs. UC Davis, 12/17/09^
Season	5 at Gonzaga, 11/14/11
Pac-12	2 (three times) vs. Arizona, 2/16/12
Free Throws Made	
Career	7 vs. Idaho, 3/7/09^
Season	5 vs. UCLA, 2/4/12
Pac-12	5 vs. UCLA, 2/4/12
Free Throws Attempted	
Career	7 at Cal Poly, 12/29/08^
Season	6 vs. UCLA, 2/4/12
Pac-12	6 vs. UCLA, 2/4/12
Rebounds	
Career	13 at NMSU, 2/14/09^
Season	4 (four times) at Oregon State, 2/9/12
Pac-12	4 (three times) at Oregon State, 2/9/12
Assists	
Career	5 vs. San Jose State, 1/11/10^
Season	4 vs. Oregon (Spokane), 12/29/11
Pac-12	4 vs. Oregon (Spokane), 12/29/11
Blocks	
Career	2 vs. San Jose State, 1/11/10^
Season	None
Pac-12	None
Steals	
Career	4 vs. Nevada, 2/17/10^
Season	2 (twice) vs. Western Oregon, 12/18/11
Pac-12	1 (twice) at Oregon, 2/11/12
*Most Recent Occurrences Noted	
^Playing for Fresno State	

MISC. STATS

Category	Season	Career
Double-Figure Scoring	3	37
Double-Figure Rebounding	0	3
Double-Doubles	0	3
Triple-Doubles	0	0
Led WSU in Scoring	0	0
Led WSU in Rebounding	0	0
20+ Point Games	0	2
30+ Point Games	0	0

CAREER STATISTICS

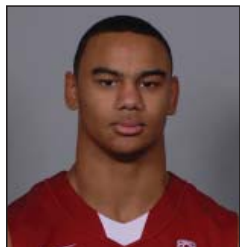
FRESNO STATE

REGULAR SEASON		3-POINT										REBOUNDS												
YEAR	GP -GS	MIN	AVG	FGM	FGA	FG%	FGM	FGA	FG%	FTM -	FTA	FT%	OFF	DEF	TOT	AVG	PF	DQ	AST	TO	BLK	STL	PTS	AVG
2008-09	34 - 15	912	26.8	118 -	250	.472	32-	88	.364	55 -	- 76	.724	58	71	129	3.8	55	0	48	34	6	25	323	9.5
2009-10	32 - 29	987	30.8	114 -	285	.400	66-	169	.391	36 -	- 47	.766	43	69	112	3.5	45	0	47	42	8	29	330	10.3
TOTAL	66 - 44	1899	28.7	232 -	535	.434	98-	257	.381	91 -	- 123	.740	101	140	241	3.6	100	0	95	76	14	54	653	9.9

WASHINGTON STATE

YEAR	GP -GS	MIN	AVG	3-POINT						REBOUNDS																		
				FGM	FGA	FG%	FGM	FGA	FG%	FTM - FTA	FT%	OFF	DEF	TOT	AVG	PF	DQ	AST	TO	BLK	STL	PTS	AVG					
2011-12	16 - -1	287	17.9	26	-	70	.371	9	-	26	.346	22	-	-	35	.629	4	34	38	2.4	40	1	13	16	1	6	83	5.2
TOTAL	16 - -1	287	17.9	26	-	70	.371	9	-	26	.346	22	-	-	35	.629	4	34	38	2.4	40	1	13	16	1	6	83	5.2

CAREER	82 - 45	2186	26.7	258 -	-605	.426	107	283	.378	113	-	-158	.715	105	174	279	3.4	140	1	108	92	15	60	736	9.0
--------	---------	------	------	-------	------	------	-----	-----	------	-----	---	------	------	-----	-----	-----	-----	-----	---	-----	----	----	----	-----	-----



#3

DAVONTÉ LACY

Guard | 6-3 | 206 | Freshman
Tacoma, Wash. | Curtis HS

LACY'S CAREER/SEASON HIGHS

Minutes	
Career	37 vs. Santa Clara, 12/11/11
Season	37 vs. Santa Clara, 12/11/11
Pac-12	32 (twice) vs. Arizona, 2/16/12
Points	
Career	19 vs. Oregon (Spokane), 12/29/11
Season	19 vs. Oregon (Spokane), 12/29/11
Pac-12	19 vs. Oregon (Spokane), 12/29/11
Field Goals Made	
Career	7 vs. Oregon (Spokane), 12/29/11
Season	7 vs. Oregon (Spokane), 12/29/11
Pac-12	7 vs. Oregon (Spokane), 12/29/11
Field Goal Attempts	
Career	12 vs. Oregon State (Spokane), 12/31/11
Season	12 vs. Oregon State (Spokane), 12/31/11
Pac-12	12 vs. Oregon State (Spokane), 12/31/11
3-Pt Field Goals Made	
Career	5 vs. Oregon (Spokane), 12/29/11
Season	5 vs. Oregon (Spokane), 12/29/11
Pac-12	5 vs. Oregon (Spokane), 12/29/11
3-Pt Field Goal Attempts	
Career	8 (twice) at Arizona State, 1/28/12
Season	8 (twice) at Arizona State, 1/28/12
Pac-12	8 (twice) at Arizona State, 1/28/12
Free Throws Made	
Career	8 vs. Eastern Washington, 12/03/11
Season	8 vs. Eastern Washington, 12/03/11
Pac-12	4 (twice) at Arizona State, 1/28/12
Free Throws Attempted	
Career	8 vs. Eastern Washington, 12/03/11
Season	8 vs. Eastern Washington, 12/03/11
Pac-12	4 (four times) at Arizona State, 1/28/12
Rebounds	
Career	6 vs. Grambling State, 11/30/11
Season	6 vs. Grambling State, 11/30/11
Pac-12	5 vs. California, 1/21/12
Assists	
Career	5 vs. Sacramento State, 11/17/11
Season	5 vs. Sacramento State, 11/17/11
Pac-12	3 (four times) vs. USC, 2/2/12
Blocks	
Career	1 (four times) vs. USC, 2/2/12
Season	1 (four times) vs. USC, 2/2/12
Pac-12	1 (three times) vs. USC, 2/2/12
Steals	
Career	3 at Portland, 11/20/11
Season	3 at Portland, 11/20/11
Pac-12	2 (twice) vs. Oregon State (Spokane), 12/31/11
Most Recent Occurrences Noted	

2011-12 GAME-BY-GAME STATISTICS

Opponent	Date	GS	Min	FG	FGA	Pct	3FG	FGA	Pct	FT	FTA	Pct	Off	Def	Tot	Avg	PF	FO	A	TO	Blk	Stl	Pts	Avg	
at Gonzaga	11/14/11		14	4	7	.571	3	6	.500	0	0	.000	1	3	4	4.0	3	0	2	1	0	0	11	11.0	
SACRAMENTO STATE	11/17/11	*	31	5	9	.556	2	6	.333	3	3	1.000	1	1	2	3.0	1	0	5	0	2	15	13.0		
at Portland	11/20/11		20	3	5	.600	1	3	.333	4	6	.667	0	2	2	2.7	3	0	3	3	0	3	11	12.3	
vs Oklahoma	11/24/11		24	2	9	.222	1	5	.200	2	2	1.000	3	0	3	2.8	2	0	2	1	0	1	7	11.0	
vs New Mexico	11/25/11		24	2	6	.333	0	3	.000	3	4	.750	0	0	0	2.2	2	0	1	1	0	0	7	10.2	
vs UC Riverside	11/27/11		23	3	7	.429	2	5	.400	1	1	1.000	0	2	2	2.2	0	0	1	0	1	1	9	10.0	
GRAMBLING STATE	11/30/11		27	3	7	.429	2	6	.333	2	2	1.000	2	4	6	2.7	2	0	1	2	0	1	10	10.0	
EASTERN WASHINGTON	12/03/11	*	31	0	6	.000	0	3	.000	8	8	1.000	0	3	3	2.8	2	0	4	3	0	1	8	9.8	
at Idaho	12/07/11	*	25	1	5	.200	1	5	.200	0	0	.000	0	0	0	2.4	1	0	4	4	0	0	3	9.0	
SANTA CLARA	12/11/11	*	37	3	7	.429	2	5	.400	0	0	.000	1	2	3	2.5	3	0	3	2	0	2	8	8.9	
WESTERN OREGON	12/18/11	*	22	2	7	.286	2	6	.333	2	6	.333	0	0	0	2.3	3	0	1	2	0	0	8	8.8	
vs Pepperdine	12/22/11	*	24	4	9	.444	3	5	.600	4	4	1.000	0	0	0	2.1	1	0	1	0	0	0	15	9.3	
OREGON	12/29/11	*	24	7	9	.778	5	6	.833	0	2	.000	1	1	2	2.1	5	1	3	1	0	2	19	10.1	
OREGON STATE	12/31/11	*	31	6	12	.500	3	5	.600	3	4	.750	0	3	3	2.1	1	0	0	4	0	2	18	10.6	
at Utah	01/05/12	*	27	1	4	.250	0	3	.000	2	4	.500	0	3	3	2.2	0	0	3	2	0	0	4	10.2	
at Colorado	01/07/12	*	21	0	2	.000	0	1	.000	4	4	1.000	0	1	1	2.1	2	0	1	1	0	4	9.8		
at Washington	01/15/12	*	29	3	9	.333	3	8	.375	1	1	1.000	0	1	1	2.1	1	0	0	2	1	2	10	9.8	
STANFORD	01/19/12	*	24	2	5	.400	1	3	.333	3	3	1.000	0	1	1	2.0	3	0	1	2	0	0	8	9.7	
CALIFORNIA	01/21/12	*	24	5	10	.500	3	6	.500	1	2	.500	1	4	5	2.2	3	0	1	1	0	1	14	9.9	
at Arizona	01/26/12	*	24	2	10	.200	0	5	.000	2	3	.667	0	0	0	2.1	4	0	2	2	0	0	6	9.8	
at Arizona State	01/28/12	*	31	3	9	.333	3	8	.375	4	4	1.000	0	2	2	2.0	2	0	3	2	0	0	13	9.9	
USC	02/02/12	*	32	3	6	.500	2	4	.500	0	0	.000	1	0	1	2.0	0	0	3	1	0	8	9.8		
UCLA	02/04/12	*	21	0	4	.000	0	4	.000	0	0	.000	0	1	1	2.0	2	0	1	1	0	1	0	9.4	
at Oregon State	02/09/12	*	29	3	7	.429	3	3	1.000	1	2	.500	0	1	1	1.9	2	0	1	0	0	10	9.4		
at Oregon	02/11/12	*	31	2	7	.286	2	4	.500	0	0	.000	1	1	2	1.9	0	0	2	1	0	1	6	9.3	
ARIZONA	02/16/12	*	32	1	5	.200	1	5	.200	0	0	.000	0	1	1	1.9	1	0	2	1	0	1	3	9.0	
Totals			20	682	70	183	.383	45	123	.366	50	65	.769	12	37	49	1.9	49	1	51	40	4	21	235	9.0

MISC. STATS

Category	Season	Career
Double-Figure Scoring	11	11
Double-Figure Rebounding	0	0
Double-Doubles	0	0
Triple-Doubles	0	0
Led WSU in Scoring	1	1
Led WSU in Rebounding	0	0
20+ Point Games	0	0
30+Point Games	0	0

CAREER STATISTICS

YEAR	GP	-GS	MIN	AVG	FGM	FGA	FG%	3-POINT			FTM	-FTA	FT%	REBOUNDS					PF	DQ	AST	TO	BLK	STL	PTS	AVG
								FGM	FGA	FG%				OFF	DEF	TOT	AVG									
2011-12	26	- 20	682	26.2	70	- -183	.383	45-	123	.366	50	- - 65	.769	12	37	49	1.9	49	1	51	40	4	21	235	9.0	
TOTAL	26	- 20	682	26.2	70	- -183	.383	45-	123	.366	50	- - 65	.769	12	37	49	1.9	49	1	51	40	4	21	235	9.0	



#5

WILL DIORIO
Guard | 6-5 | 190 | Sophomore
Bainbridge Island, Wash. | Bainbridge HS

2011-12 GAME-BY-GAME STATISTICS

Opponent	Date	GS	Min	FG	FGA	Pct	3FG	FGA	Pct	FT	FTA	Pct	Off	Def	Tot	Avg	PF	FO	A	TO	Blk	Stl	Pts	Avg
at Gonzaga	11/14/11		6	1	3	.333	0	0	.000	0	0	.000	2	0	2	2.0	5	1	0	0	0	1	2	2.0
SACRAMENTO STATE	11/17/11	*	25	1	3	.333	0	0	.000	0	2	.000	2	1	3	2.5	2	0	1	1	0	0	2	2.0
at Portland	11/20/11		8	1	1	1.000	0	0	.000	0	1	.000	0	0	0	1.7	0	0	0	0	0	0	2	2.0
vs Oklahoma	11/24/11								--Did Not Play--															
vs New Mexico	11/25/11		2	1	1	1.000	0	0	.000	0	0	.000	0	0	0	1.3	0	0	0	0	0	0	2	2.0
vs UC Riverside	11/27/11		5	0	0	.000	0	0	.000	0	0	.000	1	1	2	1.4	0	0	0	0	0	0	0	1.6
GRAMBLING STATE	11/30/11		10	1	1	1.000	0	0	.000	2	2	1.000	0	0	0	1.2	0	0	0	0	0	0	4	2.0
EASTERN WASHINGTON	12/03/11		12	0	0	.000	0	0	.000	1	2	.500	0	1	1	1.1	3	0	1	0	0	0	1	1.9
at Idaho	12/07/11		8	1	1	1.000	0	0	.000	1	2	.500	2	1	3	1.4	0	0	0	0	0	0	3	2.0
SANTA CLARA	12/11/11		4	0	0	.000	0	0	.000	0	0	.000	0	2	2	1.4	0	0	0	0	0	0	0	1.8
WESTERN OREGON	12/18/11		5	0	0	.000	0	0	.000	0	0	.000	0	1	1	1.4	0	0	0	0	0	0	0	1.6
vs Pepperdine	12/22/11		3	0	1	.000	0	0	.000	0	0	.000	1	0	1	1.4	1	0	0	1	0	0	0	1.5
OREGON	12/29/11		11	0	0	.000	0	0	.000	0	0	.000	1	1	2	1.4	0	0	0	0	0	0	0	1.3
OREGON STATE	12/31/11								--Did Not Play--															
at Utah	01/05/12								--Did Not Play--															
at Colorado	01/07/12								--Did Not Play--															
at Washington	01/15/12								--Did Not Play--															
STANFORD	01/19/12								--Did Not Play--															
CALIFORNIA	01/21/12								--Did Not Play--															
at Arizona	01/26/12		8	0	1	.000	0	0	.000	1	2	.500	2	0	2	1.5	0	0	0	0	0	0	1	1.3
USC	02/02/12		8	0	1	.000	0	0	.000	0	0	.000	1	2	3	1.5	0	0	0	0	0	0	0	1.1
UCLA	02/04/12								--Did Not Play--															
at Oregon State	02/09/12								--Did Not Play--															
at Oregon	02/11/12								--Did Not Play--															
ARIZONA	02/16/12								--Did Not Play--															
Totals			1	120	6	13	.462	0	0	.000	5	11	.455	12	11	23	1.5	11	1	2	2	0	17	1.1

DIORIO'S CAREER/SEASON HIGHS

Minutes	
Career	25 vs. Sacramento State, 11/17/11
Season	25 vs. Sacramento State, 11/17/11
Pac-12	20 vs. Arizona State, 2/19/11
Points	
Career	7 vs. Sacramento State, 11/30/10
Season	4 vs. Grambling State, 11/30/11
Pac-12	2 vs. UCLA, 3/5/11
Field Goals Made	
Career	2 vs. Sacramento State, 11/30/10
Season	1 (four times) at Idaho, 12/7/11
Pac-12	1 vs. UCLA, 3/5/11
Field Goal Attempts	
Career	3 (three times) vs. Sacramento State, 11/17/11
Season	3 (twice) vs. Sacramento State, 11/17/11
Pac-12	2 vs. UCLA, 3/5/11
3-Pt Field Goals Made	
Career	None
Season	None
Pac-12	None
3-Pt Field Goal Attempts	
Career	None
Season	None
Pac-12	None
Free Throws Made	
Career	4 vs. Long Beach State, 3/16/11
Season	2 vs. Grambling State, 11/30/11
Pac-12	None
Free Throws Attempted	
Career	6 vs. Sacramento State, 11/30/10
Season	2 (five times) at Arizona, 1/26/12
Pac-12	2 (twice) at Arizona, 1/26/12
Rebounds	
Career	4 at Arizona State, 2/19/11
Season	3 (three times) vs. USC, 2/2/12
Pac-12	4 at Arizona State, 2/19/11
Assists	
Career	3 (twice) vs. UCLA, 3/5/11
Season	1 (twice) vs. Eastern Washington, 12/03/11
Pac-12	3 (twice) vs. UCLA, 3/5/11
Blocks	
Career	None
Season	None
Pac-12	None
Steals	
Career	2 at Arizona State, 2/19/11
Season	1 at Gonzaga, 11/14/11
Pac-12	2 at Arizona State, 2/19/11
Most Recent Occurrences Noted	

MISC. STATS

Category	Season	Career
Double-Figure Scoring	0	0
Double-Figure Rebounding	0	0
Double-Doubles	0	0
Triple-Doubles	0	0
Led WSU in Scoring	0	0
Led WSU in Rebounding	0	0
20+ Point Games	0	0
30+ Point Games	0	0

CAREER STATISTICS

YEAR	GP -GS	MIN	AVG	FGM	FGA	FG%	3-POINT		FTM	FTA	FT%	REBOUNDS				PF	DQ	AST	TO	BLK	STL	PTS	AVG
							FGM	FGA				OFF	DEF	TOT	Avg								
2010-11	21 - -0	88	4.2	6	- - 14	.429	0	- - 1	.000	7	- - 12	6	13	19	0.9	9	0	7	6	0	6	19	0.9
2011-12	15 - -1	120	8.0	6	- - 13	.462	0	- - 0	.000	5	- - 11	12	11	23	1.5	11	1	2	2	0	1	17	1.1
TOTAL	36 - -1	208	5.8	12	- - 27	.444	0	- - 1	.000	12	- - 23	18	24	42	1.2	20	1	9	8	0	7	36	1.0



#11

FAISAL ADEN

Guard | 6-4 | 185 | Senior
San Diego, Calif. | Hillsborough CC

2011-12 GAME-BY-GAME STATISTICS

Opponent	Date	GS	Min	FG	FGA	Pct	3FG	FGA	Pct	FT	FTA	Pct	Off	Def	Tot	Avg	PF	FO	A	TO	Blk	Stl	Pts	Avg
at Gonzaga	11/14/11	*	26	5	12	.417	2	4	.500	0	0	.000	1	6	7	7.0	0	0	1	3	0	0	12	12.0
SACRAMENTO STATE	11/17/11		26	7	9	.778	2	4	.500	2	2	1.000	0	3	3	5.0	1	0	2	5	2	5	18	15.0
at Portland	11/20/11	*	24	7	14	.500	1	2	.500	6	7	.857	0	5	5	5.0	1	0	2	6	0	3	21	17.0
vs Oklahoma	11/24/11	*	30	5	12	.417	2	3	.667	0	0	.000	0	4	4	4.8	2	0	3	5	0	1	12	15.8
vs New Mexico	11/25/11	*	29	10	16	.625	3	6	.500	2	2	1.000	2	2	4	4.6	4	0	3	4	0	1	25	17.6
vs UC Riverside	11/27/11	*	34	6	15	.400	2	7	.286	0	0	.000	1	4	5	4.7	2	0	2	2	0	0	14	17.0
GRAMBLING STATE	11/30/11	*	29	5	16	.313	2	7	.286	0	0	.000	1	2	3	4.4	0	0	2	1	0	2	12	16.3
EASTERN WASHINGTON	12/03/11																							
at Idaho	12/07/11																							
SANTA CLARA	12/11/11																							
WESTERN OREGON	12/18/11		23	3	8	.375	1	3	.333	0	0	.000	0	1	1	4.0	2	0	2	3	0	0	7	15.1
vs Pepperdine	12/22/11		21	6	15	.400	2	5	.400	3	4	.750	0	1	1	3.7	1	0	3	1	0	2	17	15.3
OREGON	12/29/11		20	2	10	.200	0	2	.000	0	0	.000	0	2	2	3.5	1	0	0	1	0	3	4	14.2
OREGON STATE	12/31/11		9	0	1	.000	0	0	.000	1	2	.500	0	0	0	3.2	0	0	0	3	0	0	1	13.0
at Utah	01/05/12		17	4	12	.333	2	4	.500	1	2	.500	0	0	0	2.9	2	0	1	2	0	0	11	12.8
at Colorado	01/07/12		28	5	11	.455	0	3	.000	2	2	1.000	1	0	1	2.8	1	0	1	2	0	2	12	12.8
at Washington	01/15/12		24	6	13	.462	0	3	.000	6	6	1.000	1	6	7	3.1	1	0	0	3	0	1	18	13.1
STANFORD	01/19/12		29	10	17	.588	0	3	.000	13	13	1.000	1	4	5	3.2	3	0	2	0	0	1	33	14.5
CALIFORNIA	01/21/12		29	9	12	.750	0	0	.000	6	7	.857	1	1	2	3.1	4	0	0	5	0	1	24	15.1
at Arizona	01/26/12		11	3	5	.600	0	0	.000	0	0	.000	0	2	2	3.1	0	0	0	2	0	0	6	14.5
at Arizona State	01/28/12																							
USC	02/02/12																							
UCLA	02/04/12																							
at Oregon State	02/09/12																							
at Oregon	02/11/12																							
ARIZONA	02/16/12																							
Totals			6	409	93	198	.470	19	56	.339	42	.894	9	43	52	3.1	25	0	24	48	2	22	247	14.5

ADEN'S
CAREER/SEASON HIGHS

Minutes	
Career	42 vs. UCLA, 3/5/11
Season	34 vs. UC Riverside (Anaheim), 11/27/11
Pac-12	42 vs. UCLA, 3/5/11
Points	
Career	33 vs. Stanford, 1/19/12
Season	33 vs. Stanford, 1/19/12
Pac-12	33 vs. Stanford, 1/19/12
Field Goals Made	
Career	11 at Fresno State, 11/26/10
Season	10 (twice) vs. Stanford, 1/19/12
Pac-12	10 vs. Stanford, 1/19/12
Field Goal Attempts	
Career	22 at Fresno State, 11/26/10
Season	17 vs. Stanford, 1/19/12
Pac-12	19 at Stanford, 1/15/11
3-Pt Field Goals Made	
Career	6 at Fresno State, 11/26/10
Season	3 vs. New Mexico (Anaheim), 11/25/11
Pac-12	3 vs. Washington, 1/30/11
3-Pt Field Goal Attempts	
Career	12 at Fresno State, 11/26/10
Season	7 (twice) vs. Grambling State, 11/30/11
Pac-12	7 vs. Oregon State, 1/6/11
Free Throws Made	
Career	13 vs. Stanford, 1/19/12
Season	13 vs. Stanford, 1/19/12
Pac-12	13 vs. Stanford, 1/19/12
Free Throws Attempted	
Career	13 vs. Stanford, 1/19/12
Season	13 vs. Stanford, 1/19/12
Pac-12	13 vs. Stanford, 1/19/12
Rebounds	
Career	7 (five times) at Washington, 1/15/12
Season	7 (twice) at Washington, 1/15/12
Pac-12	7 (twice) at Washington, 1/15/12
Assists	
Career	4 (three times) vs. Stanford, 2/10/11
Season	3 (three times) vs. Pepperdine (Seattle), 12/22/11
Pac-12	4 (three times) vs. Stanford, 2/10/11
Blocks	
Career	2 vs. Sacramento State, 11/17/11
Season	2 vs. Sacramento State, 11/17/11
Pac-12	1 (twice) vs. Washington, 1/30/11
Steals	
Career	5 vs. Sacramento State, 11/17/11
Season	5 vs. Sacramento State, 11/17/11
Pac-12	3 (four times) vs. Oregon (Spokane), 12/29/11
Most Recent Occurrences Noted	

MISC. STATS

Category	Season	Career
Double-Figure Scoring	13	33
Double-Figure Rebounding	0	0
Double-Doubles	0	0
Triple-Doubles	0	0
Led WSU in Scoring	7	11
Led WSU in Rebounding	1	4
20+ Point Games	4	10
30+Point Games	1	1

CAREER STATISTICS

YEAR	GP -GS	MIN	AVG	FGM	FGA	FG%	3-POINT			FTM	FTA	FT%	REBOUNDS											
							FGM	FGA	FG%				OFF	DEF	TOT	AVG	PF	DQ	AST	TO	BLK	STL	PTS	AVG
2010-11	33 - -9	840	25.5	161 -	-381	.423	52-	157	.331	46	-	.59	25	81	106	3.2	46	0	42	67	8	45	420	12.7
2011-12	17 - -6	409	24.1	93 -	-198	.470	19-	56	.339	42	-	.47	9	43	52	3.1	25	0	24	48	2	22	247	14.5
TOTAL	50 - 15	1249	25.0	254 -	-579	.439	71-	213	.333	88	-	.106	34	124	158	3.2	71	0	66	115	10	67	667	13.3



#12

BROCK MOTUM

Forward | 6-10 | 230 | Junior

Brisbane, Australia | Australia Institute of Sport

MOTUM'S
CAREER/SEASON HIGHS

Minutes	
Career	40 vs. UCLA, 2/4/12
Season	40 vs. UCLA, 2/4/12
Pac-12	40 vs. UCLA, 2/4/12
Points	
Career	34 at Arizona State, 1/28/12
Season	34 at Arizona State, 1/28/12
Pac-12	34 at Arizona State, 1/28/12
Field Goals Made	
Career	13 at Arizona State, 1/28/12
Season	13 at Arizona State, 1/28/12
Pac-12	13 at Arizona State, 1/28/12
Field Goal Attempts	
Career	19 at Arizona State, 1/28/12
Season	19 at Arizona State, 1/28/12
Pac-12	19 at Arizona State, 1/28/12
3-Pt Field Goals Made	
Career	3 (twice) at Utah, 1/5/12
Season	3 (twice) at Utah, 1/5/12
Pac-12	3 (twice) at Utah, 1/5/12
3-Pt Field Goal Attempts	
Career	5 (twice) vs. Arizona, 2/16/12
Season	5 (twice) vs. Arizona, 2/16/12
Pac-12	5 (twice) vs. Arizona, 2/16/12
Free Throws Made	
Career	10 (twice) vs. Arizona, 2/16/12
Season	10 (twice) vs. Arizona, 2/16/12
Pac-12	10 (twice) vs. Arizona, 2/16/12
Free Throws Attempted	
Career	18 vs. Arizona, 2/16/12
Season	18 vs. Arizona, 2/16/12
Pac-12	18 vs. Arizona, 2/16/12
Rebounds	
Career	11 vs. UCLA, 2/4/12
Season	11 vs. UCLA, 2/4/12
Pac-12	11 vs. UCLA, 2/4/12
Assists	
Career	5 (twice) at Oregon, 2/11/12
Season	5 (twice) at Oregon, 2/11/12
Pac-12	5 at Oregon, 2/11/12
Blocks	
Career	2 vs. Western Oregon, 12/18/11
Season	2 vs. Western Oregon, 12/18/11
Pac-12	1 (twice) vs. Oregon State (Spokane), 12/31/11
Steals	
Career	2 (twice) at Oregon State, 2/9/12
Season	2 at Oregon State, 2/9/12
Pac-12	2 at Oregon State, 2/9/12
Most Recent Occurrences Noted	

2011-12 GAME-BY-GAME STATISTICS

Opponent	Date	GS	Min	FG	FGA	Pct	3FG	FGA	Pct	FT	FTA	Pct	Off	Def	Tot	Avg	PF	FO	A TO	Blk	Stl	Pts	Avg		
at Gonzaga	11/14/11	*	37	7	12	.583	1	2	.500	2	5	.400	2	6	8	8.0	3	0	4	1	0	17	17.0		
SACRAMENTO STATE	11/17/11	*	29	9	12	.750	1	2	.500	4	6	.667	4	4	8	8.0	3	0	0	5	0	23	20.0		
at Portland	11/20/11	*	29	6	9	.667	0	0	.000	1	2	.500	2	2	4	6.7	4	0	3	1	0	13	17.7		
vs Oklahoma	11/24/11	*	37	5	10	.500	1	3	.333	2	2	1.000	2	5	7	6.8	3	0	3	4	1	13	16.5		
vs New Mexico	11/25/11	*	30	3	7	.429	0	1	.000	4	5	.800	1	7	8	7.0	1	0	2	0	1	10	15.2		
vs UC Riverside	11/27/11	*	32	6	11	.545	0	1	.000	3	4	.750	2	5	7	7.0	2	0	0	2	0	15	15.2		
GRAMBLING STATE	11/30/11	*	23	5	11	.455	0	1	.000	1	2	.500	6	4	10	7.4	1	0	1	2	0	11	14.6		
EASTERN WASHINGTON	12/03/11	*	33	5	11	.455	1	4	.250	4	6	.667	1	5	6	7.3	2	0	2	6	1	15	14.6		
at Idaho	12/07/11	*	30	4	8	.500	1	2	.500	3	4	.750	2	1	3	6.8	2	0	2	4	0	12	14.3		
SANTA CLARA	12/11/11	*	31	9	13	.692	1	2	.500	8	11	.727	1	6	7	6.8	1	0	4	2	0	27	15.6		
WESTERN OREGON	12/18/11	*	22	1	3	.333	0	0	.000	1	2	.500	1	2	3	6.5	1	0	5	3	2	1	3	14.5	
vs Pepperdine	12/22/11	*	26	4	8	.500	0	0	.000	3	5	.600	1	5	6	6.4	2	0	1	4	0	11	14.2		
OREGON	12/29/11	*	25	3	8	.375	0	2	.000	6	7	.857	3	2	5	6.3	3	0	3	3	0	12	14.0		
OREGON STATE	12/31/11	*	36	10	15	.667	3	5	.600	3	4	.750	3	5	8	6.4	3	0	1	5	1	26	14.9		
at Utah	01/05/12	*	37	10	12	.833	3	3	1.000	4	6	.667	3	5	8	6.5	1	0	3	2	0	27	15.7		
at Colorado	01/07/12	*	35	2	10	.200	1	3	.333	4	4	1.000	2	2	4	6.4	5	1	1	2	0	9	15.3		
at Washington	01/15/12	*	32	7	11	.636	2	4	.500	1	2	.500	0	2	2	6.1	3	0	2	0	0	17	15.4		
STANFORD	01/19/12	*	35	6	10	.600	0	1	.000	4	4	1.000	2	4	6	6.1	3	0	0	2	0	16	15.4		
CALIFORNIA	01/21/12	*	33	5	7	.714	0	1	.000	5	6	.833	2	8	10	6.3	3	0	1	4	0	15	15.4		
at Arizona	01/26/12	*	31	4	13	.308	0	3	.000	10	10	1.000	0	9	9	6.5	3	0	2	4	0	18	15.5		
at Arizona State	01/28/12	*	38	13	19	.684	2	4	.500	6	6	1.000	4	4	8	6.5	3	0	3	6	0	34	16.4		
USC	02/02/12	*	34	9	11	.818	1	1	1.000	7	10	.700	1	7	8	6.6	2	0	1	4	0	26	16.8		
UCLA	02/04/12	*	40	9	18	.500	2	4	.500	5	6	.833	3	8	11	6.8	3	0	0	3	0	25	17.2		
at Oregon State	02/09/12	*	36	9	16	.563	0	0	.000	6	7	.857	3	6	9	6.9	1	0	0	2	1	24	17.5		
at Oregon	02/11/12	*	34	6	12	.500	1	2	.500	4	7	.571	2	3	5	6.8	4	0	5	2	0	17	17.4		
ARIZONA	02/16/12	*	35	8	14	.571	2	5	.400	10	18	.556	1	4	5	6.7	2	0	2	5	0	28	17.8		
Totals			26	840	165	.291	.567	23	.56	.411	111	151	.735	54	121	175	6.7	64	1	49	83	7	13	464	17.8

MISC. STATS

Category	Season	Career
Double-Figure Scoring	24	33
Double-Figure Rebounding	3	3
Double-Doubles	3	3
Triple-Doubles	0	0
Led WSU in Scoring	14	16
Led WSU in Rebounding	16	19
20+ Point Games	9	9
30+Point Games	1	1

CAREER STATISTICS

YEAR	GP -GS	MIN	AVG	FGM	FGA	FG%	3-POINT				REBOUNDS													
							FGM	FGA	FG%	FTM - FTA	FT%	OFF	DEF	TOT	AVG	PF	DQ	AST	TO	BLK	STL	PTS	AVG	
2009-10	19 - - 0	128	6.7	23 -	41	.561	4 -	10	.400	5 - -	11	.455	7	9	16	0.8	7	0	7	6	0	2	55	2.9
2010-11	35 - - 9	671	19.2	106 -	177	.599	10-	32	.313	43 -	- 65	.662	43	63	106	3.0	58	2	31	42	3	12	265	7.6
2011-12	26 - 26	840	32.3	165 -	291	.567	23-	56	.411	111 -	151	.735	54	121	175	6.7	64	1	49	83	7	13	464	17.8
TOTAL	80 - 35	1639	20.5	294 -	509	.578	37-	98	.378	159 -	227	.700	104	193	297	3.7	129	3	87	131	10	27	784	9.8



#23

D.J. SHELTON

Forward | 6-10 | 228 | Sophomore
Rialto, Calif. | Citrus College

2011-12 GAME-BY-GAME STATISTICS

Opponent	Date	GS	Min	FG	FGA	Pct	3FG	FGA	Pct	FT	FTA	Pct	Off	Def	Tot	Avg	PF	FO	A	TO	Blk	Stl	Pts	Avg
at Gonzaga	11/14/11	9	0	3	.000	0	0	.000	0	0	.000	1	0	1	0	1.0	1	0	0	0	1	0	0	0.0
SACRAMENTO STATE	11/17/11	8	2	3	.667	0	0	.000	3	7	.429	1	0	1	1.0	0	0	0	0	0	1	7	3.5	
at Portland	11/20/11	15	2	2	1.000	0	0	.000	4	6	.667	1	3	4	2.0	3	0	0	2	1	0	8	5.0	
vs Oklahoma	11/24/11	24	3	5	.600	0	0	.000	2	5	.400	2	3	5	2.8	4	0	0	2	1	0	8	5.8	
vs New Mexico	11/25/11	16	2	3	.667	0	0	.000	2	4	.500	2	3	5	3.2	3	0	0	2	0	0	6	5.8	
vs UC Riverside	11/27/11	23	0	2	.000	0	0	.000	4	6	.667	2	3	5	3.5	1	0	1	2	0	0	4	5.5	
GRAMBLING STATE	11/30/11	16	0	1	.000	0	0	.000	6	8	.750	1	1	2	3.3	1	0	0	3	0	1	6	5.6	
EASTERN WASHINGTON	12/03/11	--Did Not Play--																						
at Idaho	12/07/11	11	2	2	1.000	0	0	.000	3	4	.750	0	2	2	3.1	1	0	1	1	0	0	7	5.8	
SANTA CLARA	12/11/11	16	1	1	1.000	0	0	.000	3	4	.750	1	3	4	3.2	2	0	1	2	0	0	5	5.7	
WESTERN OREGON	12/18/11	14	3	5	.600	0	0	.000	1	2	.500	3	3	6	3.5	0	0	1	1	2	0	7	5.8	
vs Pepperdine	12/22/11	10	2	2	1.000	0	0	.000	0	0	.000	1	1	2	3.4	1	0	1	0	1	1	4	5.6	
OREGON	12/29/11	12	3	4	.750	0	0	.000	1	1	1.000	0	1	1	3.2	1	0	1	2	0	0	7	5.8	
OREGON STATE	12/31/11	12	3	3	1.000	0	0	.000	3	3	1.000	2	1	3	3.2	3	0	0	0	0	0	9	6.0	
at Utah	01/05/12	7	0	1	.000	0	0	.000	0	2	.000	1	0	1	3.0	1	0	0	0	0	1	0	5.6	
at Colorado	01/07/12	1	0	0	.000	0	0	.000	0	0	.000	0	1	1	2.9	0	0	0	2	0	1	0	5.2	
at Washington	01/15/12	13	2	2	1.000	0	0	.000	1	1	1.000	1	2	3	2.9	3	0	0	0	1	0	5	5.2	
STANFORD	01/19/12	19	1	2	.500	0	0	.000	0	0	.000	0	3	3	2.9	3	0	0	0	1	0	2	5.0	
CALIFORNIA	01/21/12	11	1	1	1.000	0	0	.000	1	2	.500	2	2	4	2.9	1	0	1	0	1	0	3	4.9	
at Arizona	01/26/12	11	1	2	.500	0	0	.000	4	4	1.000	2	1	3	2.9	2	0	0	1	0	0	6	4.9	
at Arizona State	01/28/12	21	1	3	.333	0	0	.000	1	1	1.000	0	3	3	3.0	5	1	0	1	0	0	3	4.9	
USC	02/02/12	--Did Not Play--																						
UCLA	02/04/12	3	0	0	.000	0	0	.000	0	0	.000	0	0	0	2.8	0	0	0	0	1	0	0	4.6	
at Oregon State	2/9/12	24	5	5	1.000	0	0	.000	4	4	1.000	6	3	9	3.1	2	0	0	1	1	0	14	5.0	
at Oregon	02/11/12	25	3	4	.750	0	0	.000	0	0	.000	2	4	6	3.2	3	0	0	0	2	0	6	5.1	
ARIZONA	02/16/12	22	1	3	.333	0	0	.000	0	0	.000	0	2	2	3.2	3	0	1	2	2	0	2	5.0	
Totals		0	343	38	59	.644	0	0	.000	43	64	.672	31	45	76	3.2	44	1	8	24	15	5	119	5.0

SHELTON'S
CAREER/SEASON HIGHS

Minutes	
Career	25 at Oregon, 2/11/12
Season	25 at Oregon, 2/11/12
Pac-12	25 at Oregon, 2/11/12
Points	
Career	14 at Oregon State, 2/9/12
Season	14 at Oregon State, 2/9/12
Pac-12	14 at Oregon State, 2/9/12
Field Goals Made	
Career	5 at Oregon State, 2/9/12
Season	5 at Oregon State, 2/9/12
Pac-12	5 at Oregon State, 2/9/12
Field Goal Attempts	
Career	5 (three times) at Oregon State, 2/9/12
Season	5 (three times) at Oregon State, 2/9/12
Pac-12	5 at Oregon State, 2/9/12
3-Pt Field Goals Made	
Career	None
Season	None
Pac-12	None
3-Pt Field Goal Attempts	
Career	None
Season	None
Pac-12	None
Free Throws Made	
Career	6 vs. Grambling State, 11/30/11
Season	6 vs. Grambling State, 11/30/11
Pac-12	4 (twice) at Oregon State, 2/9/12
Free Throws Attempted	
Career	8 vs. Grambling State, 11/30/11
Season	8 vs. Grambling State, 11/30/11
Pac-12	4 (twice) at Oregon State, 2/9/12
Rebounds	
Career	9 at Oregon State, 2/9/12
Season	9 at Oregon State, 2/9/12
Pac-12	9 at Oregon State, 2/9/12
Assists	
Career	2 vs. Stanford, 1/19/12
Season	2 vs. Stanford, 1/19/12
Pac-12	2 vs. Stanford, 1/19/12
Blocks	
Career	2 (three times) vs. Arizona, 2/16/12
Season	2 (three times) vs. Arizona, 2/16/12
Pac-12	2 (twice) vs. Arizona, 2/16/12
Steals	
Career	1 (five times) at Colorado, 1/7/12
Season	1 (five times) at Colorado, 1/7/12
Pac-12	1 (twice) at Colorado, 1/7/12
Most Recent Occurrences Noted	

MISC. STATS

Category	Season	Career
Double-Figure Scoring	1	1
Double-Figure Rebounding	0	0
Double-Doubles	0	0
Triple-Doubles	0	0
Led WSU in Scoring	0	0
Led WSU in Rebounding	2	2
20+ Point Games	0	0
30+ Point Games	0	0

CAREER STATISTICS

YEAR	GP	-GS	MIN	AVG	FGM	FGA	FG%	3-POINT			FTM	-FTA	FT%	REBOUNDS					AST	TO	BLK	STL	PTS	AVG				
								FGM	FGA	FG%				OFF	DEF	TOT	AVG	PF							DQ			
2011-12	24	- 0	343	14.3	38	-	59	.644	0	-	0	.000	43	-	64	.672	31	45	76	3.2	44	1	8	24	15	5	119	5.0
TOTAL	24	- 0	343	14.3	38	-	59	.644	0	-	0	.000	43	-	64	.672	31	45	76	3.2	44	1	8	24	15	5	119	5.0



#31

ABE LODWICK

Guard/Forward | 6-7 | 208 | RS-Senior
Bend, Ore. | Mountain View HS

2011-12 GAME-BY-GAME STATISTICS

Opponent	Date	GS	Min	FG	FGA	Pct	3FG	FGA	Pct	FT	FTA	Pct	Off	Def	Tot	Avg	PF	FO	A TO	Blk	Stl	Pts	Avg	
at Gonzaga	11/14/11									--Did Not Play (foot)--														
SACRAMENTO STATE	11/17/11									--Did Not Play (foot)--														
at Portland	11/20/11									--Did Not Play (foot)--														
vs. Oklahoma	11/24/11									--Did Not Play (foot)--														
vs. New Mexico	11/25/11									--Did Not Play (foot)--														
vs. UC Riverside	11/27/11									--Did Not Play (foot)--														
GRAMBLING STATE	11/30/11									--Did Not Play (foot)--														
EASTERN WASHINGTON	12/03/11									--Did Not Play (foot)--														
at Idaho	12/07/11									--Did Not Play (foot)--														
SANTA CLARA	12/11/11									--Did Not Play (foot)--														
WESTERN OREGON	12/18/11	14	1	1	1.000	1	1	1.000	0	0	.000	0	2	2	2.0	2	0	0	0	0	1	3	3.0	
vs Pepperdine	12/22/11	17	1	5	.200	1	3	.333	0	0	.000	0	4	4	3.0	1	0	2	0	1	0	3	3.0	
OREGON	12/29/11	16	2	5	.400	2	5	.400	0	0	.000	0	2	2	2.7	3	0	1	1	0	1	6	4.0	
OREGON STATE	12/31/11	9	0	2	.000	0	1	.000	0	0	.000	0	1	1	2.3	1	0	1	1	0	0	0	3.0	
at Utah	01/05/12	28	2	3	.667	2	2	1.000	0	0	.000	1	4	5	2.8	1	0	4	0	1	0	6	3.6	
at Colorado	01/07/12	18	2	3	.667	2	3	.667	0	0	.000	2	6	8	3.7	1	0	1	2	0	0	6	4.0	
at Washington	01/15/12	23	1	5	.200	1	5	.200	0	0	.000	0	2	2	2.3	4	5	1	0	2	0	3	3.9	
STANFORD	01/19/12	14	0	2	.000	0	2	.000	0	0	.000	1	2	3	3.4	1	0	1	0	0	0	0	3.4	
CALIFORNIA	01/21/12	23	4	7	.571	4	7	.571	0	1	.000	1	3	4	3.4	2	0	2	1	0	0	12	4.3	
at Arizona	01/26/12	* 25	2	6	.333	2	5	.400	0	0	.000	2	3	5	3.6	0	0	0	0	0	0	6	4.5	
at Arizona State	01/28/12	* 14	0	1	.000	0	1	.000	0	0	.000	0	1	1	3.4	5	1	0	1	0	0	0	4.1	
USC	02/02/12	* 23	3	7	.429	3	6	.500	0	0	.000	0	1	1	3.2	3	0	1	1	0	0	9	4.5	
UCLA	02/04/12	* 32	4	6	.667	3	5	.600	0	0	.000	3	4	7	3.5	3	0	0	4	0	3	11	5.0	
at Oregon State	02/09/12	* 16	3	5	.600	2	4	.500	0	0	.000	0	3	3	3.4	4	0	0	0	0	0	8	5.2	
at Oregon	02/11/12	* 21	2	5	.400	2	4	.500	0	0	.000	2	2	4	3.5	5	1	1	2	0	0	6	5.3	
ARIZONA	02/16/12	* 24	2	7	.286	2	5	.400	0	0	.000	1	4	5	3.6	2	0	0	0	0	0	6	5.3	
Totals		7	317	29	70	.414	27	59	.458	0	1	.000	13	44	57	3.6	39	3	14	15	2	6	85	5.3

LODWICK'S CAREER/SEASON HIGHS

Minutes	
Career	33 at UCLA, 3/5/11
Season	32 vs. UCLA, 2/4/12
Pac-12	33 at UCLA, 3/5/11
Points	
Career	13 vs. Portland State (Kennewick), 12/19/09
Season	12 vs. California, 1/21/12
Pac-12	12 vs. California, 1/21/12
Field Goals Made	
Career	5 vs. Portland State (Kennewick), 12/19/09
Season	4 (twice) vs. UCLA, 2/4/12
Pac-12	4 (twice) vs. UCLA, 2/4/12
Field Goal Attempts	
Career	10 vs. UCLA, 3/5/11
Season	7 (three times) vs. Arizona, 2/16/12
Pac-12	10 vs. UCLA, 3/5/11
3-Pt Field Goals Made	
Career	4 vs. California, 1/21/12
Season	4 vs. California, 1/21/12
Pac-12	4 vs. California, 1/21/12
3-Pt Field Goal Attempts	
Career	7 vs. California, 1/21/12
Season	7 vs. California, 1/21/12
Pac-12	7 vs. California, 1/21/12
Free Throws Made	
Career	4 vs. USC, 2/20/10
Season	None
Pac-12	4 vs. USC, 2/20/10
Free Throws Attempted	
Career	4 (twice) vs. USC, 2/20/10
Season	1 vs. California, 1/21/12
Pac-12	4 vs. USC, 2/20/10
Rebounds	
Career	9 vs. Mississippi Valley State, 11/13/09
Season	8 at Colorado, 1/7/12
Pac-12	8 (twice) at Colorado, 1/7/12
Assists	
Career	5 vs. Sacramento State, 11/30/10
Season	4 at Utah, 1/5/12
Pac-12	4 at Utah, 1/5/12
Blocks	
Career	3 at UCLA, 12/29/10
Season	1 vs. Pepperdine (Seattle), 12/22/11
Pac-12	3 at UCLA, 12/29/10
Steals	
Career	3 (twice) vs. UCLA, 2/4/12
Season	3 vs. UCLA, 2/4/12
Pac-12	3 vs. UCLA, 2/4/12

Most Recent Occurrences Noted

MISC. STATS

Category	Season	Career
Double-Figure Scoring	2	5
Double-Figure Rebounding	0	0
Double-Doubles	0	0
Triple-Doubles	0	0
Led WSU in Scoring	0	0
Led WSU in Rebounding	1	7
20+ Point Games	0	0
30+ Point Games	0	0

CAREER STATISTICS

YEAR	GP	-GS	MIN	AVG	3-POINT			REBOUNDS			PF	DQ	AST	TO	BLK	STL	PTS	AVG							
					FGM	FGA	FG%	FTM	FTA	FT%									OFF	DEF	TOT	AVG			
2008-09	21	- 0	132	6.3	7	- 39	.179	3	- 28	.107	0	- - 0	.000	5	15	20	1.0	24	1	6	10	2	3	17	0.8
2009-10	28	- 21	328	11.7	24	- 61	.393	12	- 37	.324	11	- - 13	.846	24	46	70	2.5	35	0	10	14	9	6	71	2.5
2010-11	35	- 32	816	23.3	42	- 120	.350	30	- 93	.323	9	- - 15	.600	26	116	142	4.1	117	8	47	34	9	22	123	3.5
2011-12	16	- 7	317	19.8	29	- 70	.414	27	- 59	.458	0	- - 1	.000	13	44	57	3.6	39	3	14	15	2	6	85	5.3
TOTAL	100	- 60	1593	15.9	102	- 290	.352	72	- 217	.332	20	- - 29	.690	68	221	289	2.9	215	12	77	73	22	37	296	3.0



#34

DEXTER KERNICH-DREW

Guard | 6-6 | 180 | RS-Freshman

Melbourne, Australia | Caulfield Grammar

2011-12 GAME-BY-GAME STATISTICS

Opponent	Date	GS	Min	FG	FGA	Pct	3FG	FGA	Pct	FT	FTA	Pct	Off	Def	Tot	Avg	PF	FO	A	TO	Blk	Stl	Pts	Avg
at Gonzaga	11/14/11																							
SACRAMENTO STATE	11/17/11	5	1	2	.500	1	2	.500	0	0	.000	0	0	0	0	0.0	0	0	0	0	0	3	3.0	
at Portland	11/20/11																							
vs Oklahoma	11/24/11	3	0	0	.000	0	0	.000	0	0	.000	0	0	0	0	0.0	0	0	0	0	0	0	0	1.5
vs New Mexico	11/25/11	8	0	1	.000	0	1	.000	0	0	.000	1	1	2	0.7	0	0	1	2	0	1	0	1.0	
vs UC Riverside	11/27/11	8	0	0	.000	0	0	.000	0	0	.000	0	2	2	1.0	0	0	0	0	0	0	0	0.8	
GRAMBLING STATE	11/30/11	11	0	1	.000	0	1	.000	0	0	.000	0	0	0	0.8	1	0	0	0	0	0	0	0.6	
EASTERN WASHINGTON	12/03/11	22	3	6	.500	2	5	.400	2	3	.667	2	3	5	1.5	0	0	1	0	1	1	10	2.2	
at Idaho	12/07/11	17	2	5	.400	2	5	.400	2	3	.667	1	0	1	1.4	0	0	0	2	0	0	8	3.0	
SANTA CLARA	12/11/11	17	1	3	.333	0	2	.000	3	3	1.000	0	0	1.3	4	0	1	1	0	1	5	3.3		
WESTERN OREGON	12/18/11	11	1	3	.333	1	3	.333	3	4	.750	1	0	1	1.2	1	0	0	1	0	0	6	3.6	
vs Pepperdine	12/22/11	2	0	0	.000	0	0	.000	0	0	.000	0	0	1.1	0	0	0	0	0	0	0	0	3.2	
OREGON	12/29/11	7	1	2	.500	0	1	.000	0	0	.000	0	1	1	1.1	2	0	0	0	0	1	2	3.1	
OREGON STATE	12/31/11																							
at Utah	01/05/12	2	0	0	.000	0	0	.000	0	0	.000	0	0	0	1.0	0	0	0	0	0	0	0	2.8	
at Colorado	01/07/12	* 14	2	7	.286	2	5	.400	0	1	.000	0	2	2	1.1	2	0	0	2	0	0	6	3.1	
at Washington	01/15/12																							
STANFORD	01/19/12	12	1	2	.500	1	2	.500	0	0	.000	0	0	0	1.0	0	0	1	1	0	0	3	3.1	
CALIFORNIA	01/21/12	5	1	3	.333	1	3	.333	0	0	.000	0	0	0	0.9	2	0	1	0	0	0	3	3.1	
at Arizona	01/26/12	14	1	2	.500	1	2	.500	0	0	.000	0	0	0	0.9	1	0	1	1	0	0	3	3.1	
at Arizona State	01/28/12	12	1	2	.500	1	1	1.000	0	2	.000	0	1	1	0.9	1	0	0	1	0	0	3	3.1	
USC	02/02/12	9	0	1	.000	0	1	.000	0	0	.000	0	1	1	0.9	1	0	0	0	0	0	0	2.9	
UCLA	02/04/12	9	0	3	.000	0	2	.000	0	0	.000	0	1	1	0.9	1	0	1	0	0	0	0	2.7	
at Oregon State	02/09/12	2	0	0	.000	0	0	.000	0	0	.000	0	0	0	0.9	0	0	0	0	0	1	0	2.6	
at Oregon	02/11/12	1	0	0	.000	0	0	.000	0	0	.000	0	0	0	0.8	0	0	0	0	0	0	0	2.5	
ARIZONA	02/16/12	6	0	1	.000	0	1	.000	1	2	.500	0	1	1	0.8	1	0	0	0	0	0	1	2.4	
Totals		1	197	15	44	.341	12	37	.324	11	18	.611	5	13	18	0.8	17	0	7	11	1	5	53	2.4

Minutes

Career 22 vs. Eastern Washington, 12/03/11

Season 22 vs. Eastern Washington, 12/03/11

Pac-12 14 (twice) at Arizona, 1/26/12

Points

Career 10 vs. Eastern Washington, 12/03/11

Season 10 vs. Eastern Washington, 12/03/11

Pac-12 6 at Colorado, 1/7/12

Field Goals Made

Career 3 vs. Eastern Washington, 12/03/11

Season 3 vs. Eastern Washington, 12/03/11

Pac-12 2 at Colorado, 1/7/12

Field Goal Attempts

Career 7 at Colorado, 1/7/12

Season 7 at Colorado, 1/7/12

Pac-12 7 at Colorado, 1/7/12

3-Pt Field Goals Made

Career 2 (three times) at Colorado, 1/7/12

Season 2 (three times) at Colorado, 1/7/12

Pac-12 2 at Colorado, 1/7/12

3-Pt Field Goal Attempts

Career 5 (three times) at Colorado, 1/7/12

Season 5 (three times) at Colorado, 1/7/12

Pac-12 5 at Colorado, 1/7/12

Free Throws Made

Career 3 (twice) vs. Western Oregon, 12/18/11

Season 3 (twice) vs. Western Oregon, 12/18/11

Pac-12 1 vs. Arizona, 2/16/12

Free Throws Attempted

Career 4 vs. Western Oregon, 12/18/11

Season 4 vs. Western Oregon, 12/18/11

Pac-12 2 (twice) vs. Arizona, 2/16/12

Rebounds

Career 5 vs. Eastern Washington, 12/03/11

Season 5 vs. Eastern Washington, 12/03/11

Pac-12 2 at Colorado, 1/7/12

Assists

Career 1 (seven times) vs. UCLA, 2/4/12

Season 1 (seven times) vs. UCLA, 2/4/12

Pac-12 1 (four times) vs. UCLA, 2/4/12

Blocks

Career 1 vs. Eastern Washington, 12/03/11

Season 1 vs. Eastern Washington, 12/03/11

Pac-12 None

Steals

Career 1 (five times) at Oregon State, 2/9/12

Season 1 (five times) at Oregon State, 2/9/12

Pac-12 1 (twice) at Oregon State, 2/9/12

Most Recent Occurrences Noted

MISC. STATS

Category	Season	Career
Double-Figure Scoring	1	1
Double-Figure Rebounding	0	0
Double-Doubles	0	0
Triple-Doubles	0	0
Led WSU in Scoring	0	0
Led WSU in Rebounding	0	0
20+ Point Games	0	0
30+Point Games	0	0

CAREER STATISTICS

CAREER STATISTICS

YEAR	GP -GS	MIN	AVG	FGM	FGA	FG%	3-POINT			FTM - FTA	FT%	REBOUNDS								AST	TO	BLK	STL	PTS	AVG
							FGM	FGA	FG%			OFF	DEF	TOT	AVG	PF	DQ								
2011-12	22 - - 1	197	9.0	15 - - 44	.341		12-	37	.324	11 - - 18	.611	5	13	18	0.8	17	0	7	11	1	5	53	2.4		
TOTAL	22 - - 1	197	9.0	15 - - 44	.341		12-	37	.324	11 - - 18	.611	5	13	18	0.8	17	0	7	11	1	5	53	2.4		



#40

CHARLIE ENQUIST

Forward | 6-10 | 235 | RS-Senior
Edmonds, Wash. | Kings HS

2011-12 GAME-BY-GAME STATISTICS

Opponent	Date	GS	Min	FG	FGA	Pct	3FG	FGA	Pct	FT	FTA	Pct	Off	Def	Tot	Avg	PF	FO	A	TO	Blk	Stl	Pts	Avg	
at Gonzaga	11/14/11	*	20	2	2	1.000	0	0	.000	0	0	.000	1	3	4	4.0	2	0	1	0	0	0	4	4.0	
SACRAMENTO STATE	11/17/11		5	1	2	.500	0	0	.000	0	0	.000	2	0	2	3.0	0	0	0	0	0	0	2	3.0	
at Portland	11/20/11	*	25	2	2	1.000	0	0	.000	4	5	.800	0	4	4	3.3	2	0	0	0	2	2	8	4.7	
vs Oklahoma	11/24/11	*	13	1	2	.500	0	0	.000	0	0	.000	1	0	1	2.8	2	0	0	1	0	0	2	4.0	
vs New Mexico	11/25/11	*	17	1	1	1.000	0	0	.000	1	2	.500	1	3	4	3.0	2	0	0	3	0	0	3	3.8	
vs UC Riverside	11/27/11	*	10	2	2	1.000	0	0	.000	2	2	1.000	0	3	3	3.0	1	0	0	2	1	0	6	4.2	
GRAMBLING STATE	11/30/11	*	23	4	6	.667	0	0	.000	0	0	.000	1	5	6	3.4	4	0	2	1	0	0	8	4.7	
EASTERN WASHINGTON	12/03/11	*	31	7	8	.875	0	0	.000	6	8	.750	7	6	13	4.6	4	0	0	1	0	0	20	6.6	
at Idaho	12/07/11	*	27	1	2	.500	0	0	.000	0	0	.000	1	7	8	5.0	2	0	0	0	1	0	2	6.1	
SANTA CLARA	12/11/11	*	22	7	7	1.000	0	0	.000	4	4	1.000	2	8	10	5.5	4	0	0	0	2	1	18	7.3	
WESTERN OREGON	12/18/11	*	17	3	3	1.000	0	0	.000	2	2	1.000	1	5	6	5.5	2	0	1	0	0	0	8	7.4	
vs Pepperdine	12/22/11	*	24	3	5	.600	0	0	.000	2	2	1.000	3	4	7	5.7	4	0	0	0	2	1	8	7.4	
OREGON	12/29/11	*	10	0	0	.000	0	0	.000	0	0	.000	0	1	1	5.3	2	0	0	0	0	0	0	6.8	
OREGON STATE	12/31/11	*	23	1	4	.250	0	0	.000	0	0	.000	1	3	4	5.2	1	0	0	0	1	0	2	6.5	
at Utah	01/05/12	*	17	1	3	.333	0	0	.000	0	2	.000	1	4	5	5.2	4	0	0	1	1	1	2	6.2	
at Colorado	01/07/12	*	17	0	1	.000	0	0	.000	2	2	1.000	1	3	4	5.1	2	0	1	1	0	1	2	5.9	
at Washington	01/15/12	*	9	0	2	.000	0	0	.000	0	1	.000	0	0	0	4.8	1	0	0	0	0	0	0	5.6	
STANFORD	01/19/12	*	12	0	1	.000	0	0	.000	1	1	1.000	1	3	4	4.8	0	0	1	0	0	0	1	5.3	
CALIFORNIA	01/21/12	*	14	0	3	.000	0	0	.000	0	0	.000	0	0	0	4.5	0	0	1	0	0	0	0	5.1	
at Arizona	01/26/12		8	1	1	1.000	0	0	.000	0	0	.000	0	1	1	4.4	1	0	0	0	1	0	2	4.9	
at Arizona State	01/28/12		4	0	0	.000	0	0	.000	0	0	.000	1	1	2	4.2	1	0	0	2	0	1	0	4.7	
USC	02/02/12		3	0	0	.000	0	0	.000	0	0	.000	1	0	1	4.1	0	0	0	0	0	0	0	4.5	
UCLA	02/04/12								--Did Not Play--																
at Oregon State	02/09/12		4	0	0	.000	0	0	.000	0	0	.000	0	0	0	3.9	1	0	0	0	0	0	0	4.3	
at Oregon	02/11/12								--Did Not Play--																
ARIZONA	02/16/12								--Did Not Play--																
Totals			18	355	37	57	.649	0	0	.000	24	31	.774	26	64	90	3.9	42	0	7	12	11	7	98	4.3

ENQUIST'S
CAREER/SEASON HIGHS

Minutes	
Career	31 vs. Eastern Washington, 12/03/11
Season	31 vs. Eastern Washington, 12/03/11
Pac-12	23 vs. Oregon State (Spokane), 12/31/11
Points	
Career	20 vs. Eastern Washington, 12/03/11
Season	20 vs. Eastern Washington, 12/03/11
Pac-12	4 vs. Stanford, 1/16/10
Field Goals Made	
Career	7 (twice) vs. Santa Clara, 12/11/11
Season	7 (twice) vs. Santa Clara, 12/11/11
Pac-12	2 vs. Stanford, 1/16/10
Field Goal Attempts	
Career	8 vs. Eastern Washington, 12/03/11
Season	8 vs. Eastern Washington, 12/03/11
Pac-12	4 vs. Oregon State (Spokane), 12/31/11
3-Pt Field Goals Made	
Career	None
Season	None
Pac-12	None
3-Pt Field Goal Attempts	
Career	None
Season	None
Pac-12	None
Free Throws Made	
Career	6 vs. Eastern Washington, 12/03/11
Season	6 vs. Eastern Washington, 12/03/11
Pac-12	2 (twice) at Colorado, 1/7/12
Free Throws Attempted	
Career	8 vs. Eastern Washington, 12/03/11
Season	8 vs. Eastern Washington, 12/03/11
Pac-12	2 (four times) at Colorado, 1/7/12
Rebounds	
Career	13 vs. Eastern Washington, 12/03/11
Season	13 vs. Eastern Washington, 12/03/11
Pac-12	5 at Utah, 1/5/12
Assists	
Career	2 (twice) vs. Grambling State, 11/30/11
Season	2 vs. Grambling State, 11/30/11
Pac-12	1 (three times) vs. California, 1/21/12
Blocks	
Career	3 vs. Mississippi Valley State, 11/15/08
Season	2 (three times) vs. Pepperdine (Seattle), 12/22/11
Pac-12	2 vs. Stanford, 1/16/10
Steals	
Career	2 at Portland, 11/20/11
Season	2 at Portland, 11/20/11
Pac-12	1 (four times) at Arizona State, 1/28/12
Most Recent Occurrences Noted	

MISC. STATS

Category	Season	Career
Double-Figure Scoring	2	2
Double-Figure Rebounding	2	2
Double-Doubles	2	2
Triple-Doubles	0	0
Led WSU in Scoring	1	1
Led WSU in Rebounding	5	6
20+ Point Games	1	1
30+ Point Games	0	0

CAREER STATISTICS

YEAR	GP -GS	MIN	AVG	FGM	FGA	FG%	3-POINT			FTM - FTA	FT%	REBOUNDS					PF	DQ	AST	TO	BLK	STL	PTS	AVG
							FGM	FGA	FG%			OFF	DEF	TOT	AVG									
2008-09	11 - - 0	53	4.8	5 - - 10	.500	0 - - 0	.000		1 - - 3	.333	5	4	9	0.8	3	0	0	1	6	0	11	1.0		
2009-10	17 - - 1	165	9.7	8 - - 14	.571	0 - - 0	.000		10 - - 11	.909	11	25	36	2.1	22	0	4	9	3	5	26	1.5		
2010-11	26 - - 0	113	4.3	4 - - 9	.444	0 - - 0	.000		5 - - 12	.417	6	12	18	0.7	12	0	0	2	2	4	13	0.5		
2011-12	23 - 18	355	15.4	37 - - 57	.649	0 - - 0	.000		24 - - 31	.774	26	64	90	3.9	42	0	7	12	11	7	98	4.3		
TOTAL	77 - 19	686	8.9	54 - - 90	.600	0 - - 0	.000		40 - - 57	.702	48	105	153	2.0	79	0	11	24	22	16	148	1.9		



#44

PATRICK SIMON

Forward | 6-8 | 214 | Sophomore
Ephrata, Wash. | Ephrata HS

SIMON'S CAREER/SEASON HIGHS

Minutes	
Career	20 vs. UTPA (Spokane), 12/10/10
Season	14 at Idaho, 12/7/11
Pac-12	11 (three times) at Oregon State, 2/5/11
Points	
Career	12 vs. Idaho, 11/16/10
Season	8 (twice) at Idaho, 12/7/11
Pac-12	8 at California, 1/13/11
Field Goals Made	
Career	5 vs. Idaho, 11/16/10
Season	3 (twice) at Idaho, 12/7/11
Pac-12	3 at California, 1/13/11
Field Goal Attempts	
Career	8 vs. Gonzaga, 12/8/10
Season	6 vs. Grambling State, 11/30/11
Pac-12	6 at Oregon State, 2/5/11
3-Pt Field Goals Made	
Career	3 vs. Gonzaga, 12/8/10
Season	2 (three times) vs. Santa Clara, 12/11/11
Pac-12	2 at California, 1/13/11
3-Pt Field Goal Attempts	
Career	5 (four times) vs. Grambling State, 11/30/11
Season	5 vs. Grambling State, 11/30/11
Pac-12	5 at Oregon, 2/3/11
Free Throws Made	
Career	3 vs. Sacramento State, 11/30/10
Season	None
Pac-12	2 vs. Oregon, 1/8/11
Free Throws Attempted	
Career	4 vs. Sacramento State, 11/30/10
Season	None
Pac-12	2 vs. Oregon, 1/8/11
Rebounds	
Career	8 vs. Southern, 11/13/10
Season	4 (twice) at Idaho, 12/7/11
Pac-12	2 (twice) at Arizona, 1/26/12
Assists	
Career	1 (eight times) vs. Eastern Washington, 12/03/11
Season	1 (twice) vs. Eastern Washington, 12/03/11
Pac-12	None
Blocks	
Career	1 vs. Oregon, 1/8/11
Season	None
Pac-12	1 vs. Oregon, 1/8/11
Steals	
Career	1 (four times) vs. Santa Clara, 12/11/11
Season	1 (four times) vs. Santa Clara, 12/11/11
Pac-12	None
Most Recent Occurrences Noted	

2011-12 GAME-BY-GAME STATISTICS

Opponent	Date	GS	Min	FG	FGA	Pct	3FG	FGA	Pct	FT	FTA	Pct	Off	Def	Tot	Avg	PF	FO	A TO	Blk	Stl	Pts	Avg	
at Gonzaga	11/14/11		7	1	2	.500	0	1	.000	0	0	.000	0	1	1	1.0	2	0	0	0	1	2	2.0	
SACRAMENTO STATE	11/17/11																							
at Portland	11/20/11																							
vs Oklahoma	11/24/11		6	1	3	.333	1	3	.333	0	0	.000	0	2	2	1.5	1	0	0	0	0	3	2.5	
vs New Mexico	11/25/11		9	0	2	.000	0	1	.000	0	0	.000	0	0	0	1.0	0	0	0	0	1	0	1.7	
vs UC Riverside	11/27/11		4	1	3	.333	1	3	.333	0	0	.000	0	1	1	1.0	1	0	0	0	0	3	2.0	
GRAMBLING STATE	11/30/11		9	3	6	.500	2	5	.400	0	0	.000	0	2	2	1.2	0	0	1	0	0	8	3.2	
EASTERN WASHINGTON	12/03/11		11	1	3	.333	1	2	.500	0	0	.000	1	3	4	1.7	4	0	1	0	0	3	3.2	
at Idaho	12/07/11		14	3	5	.600	2	3	.667	0	0	.000	2	2	4	2.0	1	0	0	0	0	8	3.9	
SANTA CLARA	12/11/11		8	2	3	.667	2	3	.667	0	0	.000	0	2	2	2.0	0	0	0	0	1	6	4.1	
WESTERN OREGON	12/18/11		8	1	4	.250	1	4	.250	0	0	.000	0	1	1	1.9	0	0	0	0	0	3	4.0	
vs Pepperdine	12/22/11		1	0	1	.000	0	1	.000	0	0	.000	0	0	0	1.7	0	0	0	0	0	0	3.6	
OREGON	12/29/11		2	1	1	1.000	1	1	1.000	0	0	.000	0	0	0	1.5	0	0	0	0	0	3	3.5	
OREGON STATE	12/31/11																							
at Utah	01/05/12																							
at Colorado	01/07/12																							
at Washington	01/15/12		2	0	0	.000	0	0	.000	0	0	.000	0	0	0	1.4	1	0	0	0	0	0	3.3	
STANFORD	01/19/12																							
CALIFORNIA	01/21/12																							
at Arizona	01/26/12		4	1	4	.250	0	3	.000	0	0	.000	0	2	2	1.5	0	0	0	0	0	2	3.2	
at Arizona State	01/28/12		4	0	1	.000	0	1	.000	0	0	.000	0	1	1	1.4	1	0	0	0	0	0	2.9	
USC	02/02/12																							
UCLA	02/04/12		5	1	3	.333	0	2	.000	0	0	.000	0	0	0	1.3	2	0	0	1	0	2	2.9	
at Oregon State	02/09/12																							
at Oregon	02/11/12																							
ARIZONA	02/16/12																							
Totals			0	94	16	41	.390	11	33	.333	0	0	.000	3	17	20	1.3	13	0	2	1	0	3	2.9

MISC. STATS

Category	Season	Career
Double-Figure Scoring	0	2
Double-Figure Rebounding	0	0
Double-Doubles	0	0
Triple-Doubles	0	0
Led WSU in Scoring	0	0
Led WSU in Rebounding	0	1
20+ Point Games	0	0
30+ Point Games	0	0

CAREER STATISTICS

YEAR	GP -GS	MIN	AVG	FGM	FGA	FG%	3-POINT			FTM	FTA	FT%	REBOUNDS										PTS	AVG
							FGM	FGA	FG%				OFF	DEF	TOT	AVG	PF	DQ	AST	TO	BLK	STL		
2010-11	29 - - 0	274	9.4	33 - - 89	.371		19-	62	.306	8 - - 13		.615	6	37	43	1.5	27	0	6	3	1	1	93	3.2
2011-12	15 - - 0	94	6.3	16 - - 41	.390		11-	33	.333	0 - - 0		.000	3	17	20	1.3	13	0	2	1	0	3	43	2.9
TOTAL	44 - - 0	368	8.4	49 - - 130	.377		30-	95	.316	8 - - 13		.615	9	54	63	1.4	40	0	8	4	1	4	136	3.1



CHARTING THE COUGARS

Times Led WSU in Scoring

Brock Motum	14
Faisal Aden	7
Reggie Moore	2
Marcus Capers	1
Charlie Enquist	1
DaVonté Lacy	1

Times Led WSU in Rebounding

Brock Motum	16
Charlie Enquist	5
D.J. Shelton	2
Marcus Capers	2
Faisal Aden	1
Abe Lodwick	1
Reggie Moore	1

Times Led WSU in Assists

Reggie Moore	23
DaVonté Lacy	2
Brock Motum	2
Mike Ladd	2
Faisal Aden	1
Marcus Capers	1
Abe Lodwick	1

Times Led WSU in Steals

Faisal Aden	9
Reggie Moore	9
Marcus Capers	8
DaVonté Lacy	7
Brock Motum	3
Dexter Kernich-Drew	2
Mike Ladd	2
Abe Lodwick	1
D.J. Shelton	1
Patrick Simon	1

Times Led WSU in Blocks

Marcus Capers	11
D.J. Shelton	8
Charlie Enquist	7
Brock Motum	5
DaVonté Lacy	4
Reggie Moore	2
Faisal Aden	1
Mike Ladd	1
Abe Lodwick	1
Dexter Kernich-Drew	1

Double-Figure Scoring Games

Brock Motum	24
Faisal Aden	13
Reggie Moore	12
DaVonté Lacy	11
Mike Ladd	3
Marcus Capers	2
Charlie Enquist	2
Abe Lodwick	2
Dexter Kernich-Drew	1
D.J. Shelton	1

20-Plus Point Games

Brock Motum	9
Faisal Aden	4
Reggie Moore	1
Charlie Enquist	1

30-Plus Point Games

Faisal Aden	1
Brock Motum	1

Double-Doubles

Brock Motum	3
Charlie Enquist	2
Reggie Moore	1

Consecutive Double-Figure Games (Active)

Brock Motum	10
Reggie Moore	4

Technical Fouls

Washington State	2
Opponents	4

Dunks

Washington State	54
Opponents	20

Marcus Capers	23
DaVonté Lacy	9
D.J. Shelton	7
Charlie Enquist	6
Brock Motum	5
Abe Lodwick	2
Mike Ladd	2
Dexter Kernich-Drew	1

Jump Balls Controlled

Washington State	11
Opponents	16 (1-OT)

Enquist	8/18
Motum	3/9 (0/1-OT)

Three-Point Plays

Washington State	30
Opponents	23

Brock Motum	9
D.J. Shelton	5
DaVonté Lacy	4
Marcus Capers	3
Charlie Enquist	2
Mike Ladd	2
Reggie Moore	2
Faisal Aden	2
Dexter Kernich-Drew	1

Four-Point Plays

Washington State	2
Opponents	0

Dexter Kernich-Drew	1
DaVonté Lacy	1

Consecutive Free Throws Made (Active)

Reggie Moore	6
D.J. Shelton	5
Faisal Aden	4
Marcus Capers	2
Charlie Enquist	1
Brock Motum	1

First-Half Timeouts

Washington State	22
Opponents	27

Second-Half Timeouts

Washington State	59
Opponents	54

Five-Second Violations

Washington State	0
Opponents	4

First to Score

Washington State	14
Opponents	12

First to Score for WSU

Brock Motum	9
Faisal Aden	5
Reggie Moore	5
DaVonté Lacy	3
Charlie Enquist	2
Marcus Capers	1
Abe Lodwick	1

How WSU Scored First Points

3-Pointer	10
Layup	8
Free Throw	5
Jumper	3
Dunk	0
Hook	0
Tip-in	0

First Substitutions

Faisal Aden	8
D.J. Shelton	7
Mike Ladd	7
Abe Lodwick	4
Patrick Simon	2
Will Dilorio	1
DaVonté Lacy	1

Charges Drawn

Washington State	40
Opponents	28

D.J. Shelton	8
Abe Lodwick	8
Brock Motum	6
Mike Ladd	4
Reggie Moore	4
Patrick Simon	2
Marcus Capers	2
DaVonté Lacy	2
Faisal Aden	1
Will Dilorio	1
Charlie Enquist	1
Dexter Kernich-Drew	1

FIRST HALF POINTS

WASHINGTON STATE	880
OPPONENTS	829

SECOND HALF POINTS

WASHINGTON STATE	948
OPPONENTS	925

OVERTIME POINTS

WASHINGTON STATE	6
OPPONENTS	8

POINTS IN THE PAINT

WASHINGTON STATE	756 (29.1)
OPPONENTS	634 (24.4)

POINTS OFF TURNOVERS

WASHINGTON STATE	351 (13.5)
OPPONENTS	353 (13.6)

SECOND CHANCE POINTS

WASHINGTON STATE	252 (9.7)
OPPONENTS	280 (10.8)

FASTBREAK POINTS

WASHINGTON STATE	114 (4.4)
OPPONENTS	117 (4.5)

BENCH POINTS

WASHINGTON STATE	572 (22.0)
OPPONENTS	483 (18.6)

LARGEST WSU HALFTIME LEAD

21	VS. SANTA CLARA (DEC. 11)
----	---------------------------

LARGEST WSU HALFTIME DEFICIT

20	VS. OREGON (DEC. 29)
----	----------------------

LARGEST WSU WIN

38	VS. SANTA CLARA (DEC. 11)
----	---------------------------

LARGEST WSU LOSS

24	AT ARIZONA (JAN. 26)
----	----------------------

LARGEST WSU LEAD

38	VS. SANTA CLARA (DEC. 11)
----	---------------------------

LARGEST WSU DEFICIT

28	AT ARIZONA (JAN. 26)
----	----------------------

SMALLEST WSU MARGIN OF VICTORY

2	AT IDAHO (DEC. 7)
2	VS. CALIFORNIA (JAN. 21)

SMALLEST OPP. MARGIN OF VICTORY

1	VS. UC RIVERSIDE (NOV. 27)
---	----------------------------



THE LAST TIME...

SCORING

Less than 40 points	37 vs. Stanford at Pullman, 2/25/06
40-49 points	44 vs. Wichita State at New York, 3/29/11
90-99 points	93 vs. Santa Clara at Pullman, 12/11/11
100+ points (regulation)	102 vs. Centenary at Pullman, 3/2/02
100+ points	110 vs. Gonzaga at Pullman, 12/7/02

OPPONENT SCORING

Less than 40 points	37 Grambling State at Pullman, 11/30/11
40-49 points	49 Eastern Washington at Pullman, 12/03/11
90-99 points	92 Oregon at Spokane, 12/29/11
100+ points (regulation)	115 Oregon at Eugene, 2/21/02
100+ points	110 Gonzaga at Pullman, 12/7/02

FIELD GOAL PERCENTAGE

Less than .200 shooting	UNKNOWN
.200-.299 shooting	.294 (15-51) vs. Wichita State at New York, 3/29/11
.300-.399 shooting	.377 (20-53) vs. UCLA at Pullman, 2/4/12
.300-.399 shooting and won	.396 (21-53) vs. Washington at Seattle, 2/27/11
.600 shooting or higher	.674 (31-46) vs. Santa Clara at Pullman, 12/11/11

OPPONENT FIELD GOAL PERCENTAGE

Less than .200 shooting	.167 (9-54) Miss. Valley St. at Pullman, 11/15/08
.200-.299 shooting	.261 (12-46) Western Oregon at Pullman, 12/18/11
.300-.399 shooting	.373 (22-59) Oregon State at Corvallis, 2/9/12
.300-.399 shooting and won	.389 (21-54) UCLA at Pullman, 3/5/11
.600 shooting or higher	.694 (34-49) Oregon at Spokane, 12/29/11

BASKETS MADE

40+ field goals made	(40-63) vs. UCLA at Pullman, 1/4/03
10+ 3-point field goals made	(10-23) vs. Washington at Los Angeles, 3/10/11
15+ 3-point field goals made	(15-29) vs. Sacramento State at Pullman, 11/21/08
Did not make a 3-pointer	(0-6) vs. Oregon at Los Angeles, 3/12/09
Made 30+ free throws	(32-36) vs. Washington at Seattle, 2/27/11
Attempted 45+ free throws	(37-47) vs. Arizona State at Pullman, 1/13/01
Attempted less than five free throws	(1-1) vs. California at Berkeley, 2/7/09
Attempted 5-10 free throws	(6-7) vs. USC at Los Angeles, 12/31/10
Attempted 11-15 free throws	(7-11) vs. Oregon at Eugene, 2/11/12
Attempted zero free throws in a half	vs. Arizona State at Pullman (first half), 2/28/09

OPPONENT BASKETS MADE

40+ field goals made	(40-76) Arizona at Tucson, 2/3/96
10+ 3-point field goals made	(11-20) Oregon at Eugene, 2/11/12
15+ 3-point field goals made	(15-26) Arizona at Tucson, 1/26/12
Did not make a 3-pointer	(0-15) Mississippi Valley State at Spokane, 11/24/07
Made 30+ free throws	(30-37) Gonzaga at Spokane, 11/14/11
Attempted 45+ free throws	(32-47) Colorado State at Fort Collins, 12/14/02
Attempted less than five free throws	(2-3) USC at Pullman, 2/2/12
Attempted 5-10 free throws	(5-10) Utah at Salt Lake City, 1/5/12
Attempted 11-15 free throws	(12-15) Idaho at Moscow, 12/7/11
Attempted zero free throws in a half	USC at Pullman (first half), 2/2/12

REBOUNDS

Less than 10 rebounds	UNKNOWN
10-20 rebounds	20 (2 off/18 def) vs. California at Berkeley, 2/7/09
50+ rebounds	50 (15 off/35 def) vs. Southern at Pullman, 11/13/10
20+ rebound margin	+27 (50/23) vs. Southern at Pullman, 11/13/10

OPPONENT REBOUNDS

Less than 10 rebounds	7 Princeton at East Lansing, Mich., 12/29/92
10-20 rebounds	20 (3 off/17 def) USC at Pullman, 2/2/12
50+ rebounds	52 (18 off/34 def) Wichita State at New York, 3/29/11
20+ rebound margin	+27 (52/25) Wichita State at New York, 3/29/11

STEALS

10-15 steals	12 vs. Portland at Portland, 11/20/11
More than 15 steals	16 vs. Wyoming at Pullman, 11/30/05

OPPONENT STEALS

10-15 steals	10 Oregon State at Spokane, 12/31/11
More than 15 steals	15 Southern at Pullman, 12/4/99

ASSISTS

20-25 assists	20 vs. Arizona at Pullman, 1/22/11
More than 25 assists	27 vs. UC Riverside at Pullman, 11/19/05

OPPONENT ASSISTS

20-25 assists	23 Arizona at Tucson, 1/26/12
More than 25 assists	30 Arizona at Tucson, 2/1/01

TURNOVERS

Less than 5 turnovers	4 vs. Stanford at Pullman, 2/2/08
5-10 turnovers	10 vs. Oregon at Eugene, 2/11/12
25-30 turnovers	25 vs. Kansas State at Manhattan, Kan., 12/5/09
31-35 turnovers	31 vs. UCLA at Los Angeles, 2/25/99
35 or more turnovers	37 vs. USC at Pullman, 1/10/65

OPPONENT TURNOVERS

Less than 5 turnovers	4 Oregon State at Pullman, 2/14/09
5-10 turnovers	10 UCLA at Pullman, 2/4/12
25-30 turnovers	25 Gonzaga at Spokane, 12/8/10
31-35 turnovers	32 Prairie View A&M at Pullman, 11/24/01
35 or more turnovers	35 Central Connecticut State, 11/22/91

BLOCKED SHOTS

10+ blocked shots	11 vs. Portland at Seattle, 11/23/10
-------------------	--------------------------------------

OPPONENT BLOCKED SHOTS

10+ blocked shots	11 Arizona at Tucson, 11/13/00
-------------------	--------------------------------

FREE THROW PERCENTAGE

Less than .500	.455 (10-22) vs. Utah at Salt Lake City, 1/5/12
.900-.999	.931 (27-29) vs. Stanford at Pullman, 1/19/12
1.000	1.000 (1-1) vs. California at Berkeley, 2/7/09

OPPONENT FREE THROW PERCENTAGE

Less than .500	.500 (10-20) Arizona at Tucson, 1/26/12
.900-.999	.933 (14-15) UCLA at Pullman, 3/5/11
1.000	1.000 (10-10) Oregon at Los Angeles, 3/10/10

MARGIN OF VICTORY

1-point	82-81 vs. UCLA at Los Angeles, 2/21/09
2-points	77-75 vs. California at Pullman, 1/21/12
20-30 points	24 (66-42) vs. Western Oregon at Pullman, 12/18/11
Back-to-back 20+ points	38 (93-55) vs. Santa Clara at Pullman, 12/11/11
	24 (66-42) vs. Western Oregon at Pullman, 12/18/11
31-40 points	38 (93-55) vs. Santa Clara at Pullman, 12/11/11
41-50 points	48 (84-36) vs. Sacramento State at Pullman, 11/30/10
50+ points	51 (76-25) vs. Mississippi Valley State at Pullman, 11/15/08
30+ halftime lead	30 (47-17) vs. Sacramento State at Pullman, 11/30/10
Single-overtime win	vs Northwestern at Pullman, 3/23/11 (69-66)
Double-overtime win	vs. Washington at Pullman, 3/8/08 (76-73)
Triple-overtime win	vs. UCLA at Pullman, 1/2/82 (57-51)

OPPONENT MARGIN OF VICTORY

1-point	64-63 UC Riverside at Anaheim, 11/27/11
2-points	62-60 (OT) Utah at Salt Lake City, 1/5/12
20-30 points	24 (85-61) Arizona at Tucson, 1/26/12
Back-to-back 20+ points	38 (96-58) Gonzaga at Spokane, 12/28/03
	22 (73-51) Stanford at Stanford, 1/2/04
31-40 points	31 (75-44) Wichita State at New York, 3/29/11
40+ points	52 (81-29) Oklahoma State at Stillwater, 12/4/04
30+ halftime lead	30 (21-51) Arizona State at Tempe, 2/7/02
Single-overtime win	Utah at Salt Lake City, Utah, 1/5/12 (62-60)
Double-overtime win	Oregon at Pullman, 12/31/09 (91-89)
Triple-overtime win	Oregon at Pullman, 1/14/99 (87-83)



2011-12 STATISTICS • ALL GAMES

RECORD:	OVERALL	HOME	AWAY	NEUTRAL
ALL GAMES	13-13	9-3	3-7	1-3
CONFERENCE	5-9	4-3	1-6	0-0
NON-CONFERENCE	8-4	5-0	2-1	1-3

#	Player	TOTAL					3-PTS					REBOUNDS														
		GP	GS	Min	Avg	FG	FGA	Pct	3FG	FGA	Pct	FT	FTA	Pct	Off	Def	Tot	Avg	PF	FO	A	TO	Blk	Stl	Pts	Avg
12	Motum, Brock	26	26	840	32.3	165	291	.567	23	56	.411	11	151	.735	54	121	175	6.7	64	1	49	83	7	13	464	17.8
11	Aden, Faisal	17	6	409	24.1	93	198	.470	19	56	.339	42	47	.894	9	43	52	3.1	25	0	24	48	2	22	247	14.5
01	Moore, Reggie	26	24	851	32.7	84	216	.389	26	70	.371	58	80	.725	3	59	62	2.4	48	1	147	65	4	29	252	9.7
03	Lacy, DaVonte	26	20	682	26.2	70	183	.383	45	123	.366	50	65	.769	12	37	49	1.9	49	1	51	40	4	21	235	9.0
31	Lodwick, Abe	16	7	317	19.8	29	70	.414	27	59	.458	0	1	.000	13	44	57	3.6	39	3	14	15	2	6	85	5.3
00	Capers, Marcus	26	26	726	27.9	49	87	.563	1	3	.333	39	57	.684	41	77	118	4.5	66	2	44	37	18	18	138	5.3
02	Ladd, Mike	16	1	287	17.9	26	70	.371	9	26	.346	22	35	.629	4	34	38	2.4	40	1	13	16	1	6	83	5.2
23	Shelton, D.J.	24	0	343	14.3	38	59	.644	0	0	.000	43	64	.672	31	45	76	3.2	44	1	8	24	15	5	119	5.0
40	Enquist, Charlie	23	18	355	15.4	37	57	.649	0	0	.000	24	31	.774	26	64	90	3.9	42	0	7	12	11	7	98	4.3
44	Simon, Patrick	15	0	94	6.3	16	41	.390	11	33	.333	0	0	.000	3	17	20	1.3	13	0	2	1	0	3	43	2.9
34	Kernich-Drew, Dexter	22	1	197	9.0	15	44	.341	12	37	.324	11	18	.611	5	13	18	0.8	17	0	7	11	1	5	53	2.4
05	Dilorio, Will	15	1	120	8.0	6	13	.462	0	0	.000	5	11	.455	12	11	23	1.5	11	1	2	2	0	1	17	1.1
33	Wink, Dave	2	0	4	2.0	0	1	.000	0	0	.000	0	0	.000	0	1	1	0.5	0	0	0	0	0	0	0	0.0
TM TEAM.....															29	41	70	2.7	1			3			0	
Total.....		26				628	1330	.472	173	463	.374	405	560	.723	242	607	849	32.7	459	11	368	357	65	136	1834	70.5
Opponents.....		26				614	1423	.431	193	537	.359	341	500	.682	285	539	824	31.7	489	-	355	329	80	163	1762	67.8

SCORE BY PERIODS:	1st	2nd	OT	Total	DEADBALL REBOUNDS:	OFF	DEF	TOTAL
Washington State	880	948	6	1834	Washington State	66	8	74
Opponents	829	925	8	1762	Opponents	67	10	77

2011-12 STATISTICS • PAC-12 GAMES

RECORD:	OVERALL	HOME	AWAY	NEUTRAL
ALL GAMES	5-9	4-3	1-6	0-0
CONFERENCE	5-9	4-3	1-6	0-0
NON-CONFERENCE	0-0	0-0	0-0	0-0

##	Player	TOTAL					3-PTS					REBOUNDS														
		GP	GS	Min	Avg	FG	FGA	Pct	3FG	FGA	Pct	FT	FTA	Pct	Off	Def	Tot	Avg	PF	FO	A	TO	Blk	Stl	Pts	Avg
12	Motum, Brock	14	14	481	34.4	101	176	.574	17	38	.447	75	97	.773	29	69	98	7.0	39	1	24	44	2	6	294	21.0
11	Aden, Faisal	8	0	167	20.9	39	81	.481	2	15	.133	29	32	.906	4	15	19	2.4	12	0	4	18	0	8	109	13.6
01	Moore, Reggie	14	13	478	34.1	48	128	.375	16	42	.381	34	46	.739	3	24	27	1.9	26	0	81	28	2	17	146	10.4
03	Lacy, DaVonte	14	14	380	27.1	38	99	.384	26	65	.400	21	29	.724	4	20	24	1.7	26	1	23	21	3	10	123	8.8
02	Ladd, Mike	9	0	176	19.6	16	38	.421	3	8	.375	16	24	.667	2	23	25	2.8	21	1	10	11	1	2	51	5.7
31	Lodwick, Abe	14	7	286	20.4	27	64	.422	25	55	.455	0	1	.000	13	38	51	3.6	36	3	12	15	1	5	79	5.6
00	Capers, Marcus	14	14	413	29.5	26	46	.565	0	2	.000	22	29	.759	28	42	70	5.0	40	2	24	22	7	9	74	5.3
23	Shelton, D.J.	13	0	181	13.9	21	30	.700	0	0	.000	15	18	.833	16	23	39	3.0	27	1	3	9	9	2	57	4.4
34	Kernich-Drew, Dexter	12	1	93	7.8	7	23	.304	6	18	.333	1	5	.200	0	7	7	0.6	11	0	4	5	0	2	21	1.8
44	Simon, Patrick	5	0	17	3.4	3	9	.333	1	7	.143	0	0	.000	0	3	3	0.6	4	0	0	1	0	0	7	1.4
40	Enquist, Charlie	11	7	121	11.0	3	15	.200	0	0	.000	3	6	.500	6	16	22	2.0	13	0	3	4	3	3	9	0.8
05	Dilorio, Will	4	0	32	8.0	0	2	.000	0	0	.000	1	2	.500	4	4	8	2.0	0	0	0	0	0	0	1	0.3
TM TEAM.....															9	19	28	2.0	1			1			0	
Total.....		14				329	711	.463	96	250	.384	217	289	.751	118	303	421	30.1	256	9	188	179	28	64	971	69.4
Opponents.....		14				357	751	.475	120	308	.390	185	278	.665	142	296	438	31.3	259	-	217	166	43	77	1019	72.8

SCORE BY PERIODS:	1st	2nd	OT	Total	DEADBALL REBOUNDS:	OFF	DEF	TOTAL
Washington State	458	507	6	971	Washington State	33	4	37
Opponents	483	528	8	1019	Opponents	38	7	45



2011-12 RESULTS

DATE	TIME	OPPONENT	W/L	SCORE	ATTEND	OVERALL	PAC-12	HIGH POINTS	HIGH REBOUNDS
11/14/11	9:00 p.m.	at Gonzaga	L	81-89	6000	0-1	0-0	(17)Motum, Brock	(8)Motum, Brock
11/17/11	7:05 p.m.	SACRAMENTO STATE	W	79-68	4117	1-1	0-0	(23)Motum, Brock	(8)Motum, Brock
11/20/11	7 p.m.	at Portland	W	83-73	3613	2-1	0-0	(21)Aden, Faisal	(6)Moore, Reggie
11/24/11	8:30 p.m.	vs Oklahoma	L	59-74	1457	2-2	0-0	(13)Motum, Brock	(7)Motum, Brock
11/25/11	6:30 p.m.	vs New Mexico	L	62-72	1777	2-3	0-0	(25)Aden, Faisal	(8)Motum, Brock
11/27/11	10:30 am	vs UC Riverside	L	63-64	2637	2-4	0-0	(15)Motum, Brock	(7)Motum, Brock
11/30/11	5:30 p.m.	GRAMBLING STATE	W	69-37	2930	3-4	0-0	(12)Aden, Faisal	(10)Motum, Brock
12/03/11	3:30 p.m.	EASTERN WASHINGTON	W	75-49	4002	4-4	0-0	(20)Enquist, Charlie	(13)Enquist, Charlie
12/07/11	7:05 p.m.	at Idaho	W	66-64	3321	5-4	0-0	(15)Moore, Reggie	(8)Enquist, Charlie
12/11/11	1 p.m.	SANTA CLARA	W	93-55	2711	6-4	0-0	(27)Motum, Brock	(10)Enquist, Charlie
12/18/11	4:35 p.m.	WESTERN OREGON	W	66-42	2318	7-4	0-0	(9)Capers, Marcus	(6)Shelton, D.J.
									(6)Enquist, Charlie
12/22/11	7 p.m.	vs Pepperdine	W	67-56	9831	8-4	0-0	(17)Aden, Faisal	(7)Enquist, Charlie
12/29/11	6 p.m.	*#OREGON	L	75-92	9889	8-5	0-1	(19)Lacy, DaVonte	(5)Motum, Brock
12/31/11	3 p.m.	*#OREGON STATE	W	81-76	8282	9-5	1-1	(26)Motum, Brock	(8)Motum, Brock
01/05/12	7 p.m.	*at Utah	L (OT)	60-62	8412	9-6	1-2	(27)Motum, Brock	(8)Motum, Brock
01/07/12	2:06 p.m.	*at Colorado	L	60-71	8518	9-7	1-3	(14)Moore, Reggie	(8)Lodwick, Abe
01/15/12	4 p.m.	*at Washington	L	65-75	10000	9-8	1-4	(18)Aden, Faisal	(7)Aden, Faisal
01/19/12	7:05 p.m.	*STANFORD	W	81-69	3119	10-8	2-4	(33)Aden, Faisal	(6)Motum, Brock
01/21/12	3:05 p.m.	*CALIFORNIA	W	77-75	5013	11-8	3-4	(24)Aden, Faisal	(10)Motum, Brock
01/26/12	8:30 p.m.	*at Arizona	L	61-85	14138	11-9	3-5	(18)Motum, Brock	(9)Motum, Brock
01/28/12	3 p.m. MT	*at Arizona State	L	67-71	6224	11-10	3-6	(34)Motum, Brock	(8)Motum, Brock
02/02/12	7:05 p.m.	*USC	W	60-53	4002	12-10	4-6	(26)Motum, Brock	(8)Capers, Marcus
									(8)Motum, Brock
02/04/12	2 p.m.	*UCLA	L	60-63	4204	12-11	4-7	(25)Motum, Brock	(11)Motum, Brock
02/09/12	7 p.m.	*at Oregon State	W	83-73	5782	13-11	5-7	(24)Motum, Brock	(9)Shelton, D.J.
									(9)Motum, Brock
02/11/12	3:05 p.m.	*at Oregon	L	69-78	10071	13-12	5-8	(17)Motum, Brock	(6)Shelton, D.J.
2/16/12	6 p.m.	*ARIZONA	L	72-76	3616	13-13	5-9	(28)Motum, Brock	(7)Capers, Marcus

* - Conference game # -Spokane Arena

ATTENDANCE SUMMARY

	GAMES	TOTALS	AVG/GAME
HOME	12	54203	4517
AWAY	10	76079	7608
NEUTRAL	4	11288	2822
TOTAL	26	141570	5445



2011-12 GAME-BY-GAME COMPARISON

Opponent	1st	2nd	Score	Mar	Total FG	FG Pct	3-Pointers	3FG Pct	Free Throws	FT Pct	Rbds	Mar	Assist	TOver	Block	Steal	Fouls
Gonzaga	32/41	49/48	81-89	(8)	29-61/23-56	.475/.411	9-20/13-29	.450/.448	14-21/30-37	.667/.811	33/41	(8)	15/17	13/13	4/5	9/8	27/19
SACRAMENTO STATE	36/39	43/29	79-68	+11	27-53/27-56	.509/.482	6-20/6-16	.300/.375	19-32/8-12	.594/.667	31/34	(3)	16/15	13/17	2/2	10/6	13/25
Portland	43/33	40/40	83-73	+10	28-50/24-60	.560/.400	3-9/5-21	.333/.238	24-34/20-28	.706/.714	28/39	(11)	16/11	17/20	5/1	12/10	25/25
Oklahoma	40/38	19/36	59-74	(15)	22-52/27-60	.423/.450	7-17/9-20	.412/.450	8-11/11-18	.727/.611	35/32	+3	12/14	22/11	3/3	5/7	18/14
New Mexico	27/36	35/36	62-72	(10)	22-50/24-55	.440/.436	5-18/9-19	.278/.474	13-22/15-20	.591/.750	33/33	-	13/19	18/15	1/4	5/8	17/22
UC Riverside	32/25	31/39	63-64	(1)	24-53/26-62	.453/.419	5-17/8-16	.294/.500	10-15/4-5	.667/.800	38/31	+7	10/14	12/7	3/7	1/3	11/14
GRAMBLING STATE	34/17	35/20	69-37	+32	24-56/14-55	.429/.255	7-23/4-25	.304/.160	14-18/5-8	.778/.625	45/32	+13	18/8	11/15	1/2	7/6	11/15
EASTERN WASHINGTON	41/25	34/24	75-49	+26	23-46/15-59	.500/.254	6-17/4-23	.353/.174	23-30/15-20	.767/.750	45/29	+16	16/4	21/12	4/0	4/9	20/25
Idaho	35/25	31/39	66-64	+2	24-51/24-54	.471/.444	7-21/4-13	.333/.308	11-15/12-15	.733/.800	31/25	+6	15/9	14/9	3/3	1/10	13/13
SANTA CLARA	48/27	45/28	93-55	+38	31-46/20-50	.674/.400	6-13/3-15	.462/.200	25-32/12-22	.781/.545	33/24	+9	19/7	12/15	2/1	7/7	15/21
WESTERN OREGON	28/25	38/17	66-42	+24	22-44/12-46	.500/.261	9-22/4-17	.409/.235	13-22/14-21	.591/.667	36/28	+8	15/7	15/18	4/2	5/7	17/23
Pepperdine	26/15	41/41	67-56	+11	23-57/21-59	.404/.356	7-16/4-15	.438/.267	14-19/10-16	.737/.625	40/38	+2	15/13	10/11	5/7	6/5	16/14
OREGON	34/54	41/38	75-92	(17)	26-57/34-49	.456/.694	9-21/9-16	.429/.563	14-20/15-25	.700/.600	22/34	(12)	18/20	10/17	2/1	8/3	22/22
OREGON STATE	40/35	41/41	81-76	+5	28-52/26-57	.538/.456	6-12/8-23	.500/.348	19-24/16-22	.792/.727	30/31	(1)	15/17	16/15	2/4	5/10	15/21
Utah	23/29	31/25	60-62	(2)	21-48/26-55	.438/.473	8-15/5-20	.533/.250	10-22/5-10	.455/.500	33/33	-	16/15	10/9	2/3	4/5	15/19
Colorado	24/32	36/39	60-71	(11)	19-52/23-49	.365/.469	8-21/9-23	.381/.391	14-19/16-23	.737/.696	31/35	(4)	9/14	13/14	1/4	7/5	18/20
Washington	31/25	34/50	65-75	(10)	23-51/24-63	.451/.381	7-24/10-26	.292/.385	12-16/17-28	.750/.607	24/46	(22)	13/14	12/10	3/2	4/5	21/20
STANFORD	27/29	54/40	81-69	+12	25-48/24-59	.521/.407	4-13/8-33	.308/.242	27-29/13-19	.931/.684	30/30	-	12/12	7/10	1/4	2/2	18/21
CALIFORNIA	34/40	43/35	77-75	+2	26-49/29-62	.531/.468	8-18/6-20	.444/.300	17-22/11-14	.773/.786	33/30	+3	16/16	16/10	2/3	8/6	17/15
Arizona	27/42	34/43	61-85	(24)	18-52/30-59	.346/.508	4-21/15-26	.190/.577	21-25/10-20	.840/.500	32/37	(5)	11/23	17/9	1/0	0/9	19/20
Arizona State	36/37	31/34	67-71	(4)	23-49/24-44	.469/.545	7-17/7-15	.412/.467	14-17/16-28	.824/.571	28/25	+3	16/18	18/16	1/5	4/8	24/17
USC	30/24	30/29	60-53	+7	20-42/21-50	.476/.420	6-14/9-25	.429/.360	14-19/2-3	.737/.667	34/20	+14	14/13	13/9	1/1	1/4	8/15
UCLA	34/29	26/34	60-63	(3)	20-53/22-48	.377/.458	8-22/4-14	.364/.286	12-14/15-24	.857/.625	37/30	+7	8/11	15/10	1/5	5/9	20/16
Oregon State	46/31	37/42	83-73	+10	28-54/22-59	.519/.373	6-12/10-28	.500/.357	21-27/19-23	.778/.826	34/33	+1	14/12	10/14	4/6	7/6	19/21
Oregon	33/36	36/42	69-78	(9)	27-54/26-47	.500/.553	8-19/11-20	.421/.550	7-11/15-18	.636/.833	25/25	-	15/16	10/11	3/3	6/3	19/14
ARIZONA	39/40	33/36	72-76	(4)	25-50/26-50	.500/.520	7-21/9-19	.333/.474	15-24/15-21	.625/.714	28/29	(1)	11/16	12/12	4/2	3/2	21/18

Note: Game totals are displayed in the format TEAM/OPPONENT for each category



2011-12 SEASON HIGHLIGHTS

Opponent	Result	Notes
at Gonzaga (11/14)	L, 89-81	Brock Motum played a career-high 37 minutes, led team with 17 points and 8 rebounds (career high).
SACRAMENTO STATE (11/17)	W, 79-68	Brock Motum scored a career-high 23 points and led the team with 8 rebounds (tying career high).
at Portland (11/20)	W, 83-73	Charlie Enquist played a career-high 25 minutes and scored a career-high 8 points in third career start.
vs. Oklahoma (Anaheim) (11/24)	L, 79-54	WSU out-rebounded its opponent for the first time this season (35-32).
vs. New Mexico (Anaheim) (11/25)	L, 72-62	Faisal Aden scored a season-high 25 points, just three points shy of his career high.
vs. UC Riverside (Anaheim) (11/27)	L, 64-63	Brock Motum and Faisal Aden each scored in double figures, continuing streak of all six games.
GRAMBLING STATE (11/30)	W, 69-37	Brock Motum recorded first career double-double with 11 points and 10 rebounds.
EASTERN WASHINGTON (12/03)	W, 75-49	Charlie Enquist recorded first career double-double with 20 points and 13 rebounds.
at Idaho (12/07)	W, 66-64	Reggie Moore hits game-winning jumper with three seconds left to give the Cougars a victory.
SANTA CLARA	W, 93-55	Brock Motum scored a career-high 27 points...Charlie Enquist recorded second career double-double.
WESTERN OREGON	W, 66-42	Marcus Capers led the team in scoring for the first time in his career (nine points).
vs. Pepperdine (Seattle) (12/22)	W, 67-56	The Cougars improved to 7-0 all-time in the Cougar Hardwood Classic.
OREGON (Spokane) (12/29)	L, 92-75	Oregon shot .694 from the field...a WSU opponent best since Gonzaga shot .708 Dec. 28, 2003.
OREGON STATE (Spokane) (12/31)	W, 81-76	Brock Motum scored a personal conference-best 26 points...Reggie Moore had a season-high 9 assists.
at Utah (1/5)	L, 62-60 (OT)	WSU played its first overtime game of the season...dropped to 2-5 in overtime games under Coach Bone.
at Colorado (1/7)	L, 71-60	Reggie Moore led the team with 14 points...scored 11 of the 14 in the second half.
at Washington (1/15)	L, 75-65	Faisal Aden tied his career high with 7 rebounds...also led the team with 18 points.
STANFORD (1/19)	W, 81-69	Faisal Aden scored a career high 33 points, shooting 13-of-13 from the free throw line.
CALIFORNIA (1/21)	W, 77-75	DaVonte Lacy hits game-winning 3-pointer with 17 seconds left to give the Cougars a victory.
at Arizona (1/26)	L, 85-61	Brock Motum made a career-high 10 free throws...was perfect from the charity stripe.
at Arizona State (1/28)	L, 71-67	Brock Motum scored a career-high 34 points...first 30-point performance of his career.
USC (2/2)	W, 60-53	Brock Motum reached the 20-point plateau for the sixth time this season, finished with 26 points.
UCLA (2/4)	L, 63-60	Brock Motum recorded the third double-double of his career with 25 points and a career-high 11 rebounds.
at Oregon State (2/9)	W, 83-73	Reggie Moore had second career double-double (10 pts, 11 assts)...D.J. Shelton had career-high 14 pts, 9 rbs.
at Oregon (2/11)	L, 78-69	Mike Ladd tied season-high 13 points...Brock Motum recorded 9th-consecutive double-figure scoring game.
ARIZONA (2/16)	L, 76-72	Reggie Moore scored a season-high 21 points on a season-high eight field goals.



2011-12 SEASON HIGHS/LOWS

WASHINGTON STATE

HIGHS

POINTS	93	SANTA CLARA (12/11/11)
FIELD GOALS MADE	31	SANTA CLARA (12/11/11)
FIELD GOAL ATTEMPTS	61	at Gonzaga (11/14/11)
FIELD GOAL PERCENTAGE	.674 (31-46)	SANTA CLARA (12/11/11)
3 PT FIELD GOALS MADE	9	OREGON (12/29/11)
	9	WESTERN OREGON (12/18/11)
	9	at Gonzaga (11/14/11)
3 PT FG ATTEMPTS	23	GRAMBLING STATE (11/30/11)
3 PT FG PERCENTAGE	.533 (8-15)	at Utah (01/05/12)
FREE THROWS MADE	27	STANFORD (01/19/12)
FREE THROW ATTEMPTS	34	at Portland (11/20/11)
FREE THROW PERCENTAGE	.931 (27-29)	STANFORD (01/19/12)
REBOUNDS	45	EASTERN WASHINGTON (12/03/11)
	45	GRAMBLING STATE (11/30/11)
ASSISTS	19	SANTA CLARA (12/11/11)
STEALS	12	at Portland (11/20/11)
BLOCKED SHOTS	5	vs Pepperdine (12/22/11)
	5	at Portland (11/20/11)
TURNOVERS	22	vs Oklahoma (11/24/11)
FOULS	27	at Gonzaga (11/14/11)

LOWS

POINTS	59	vs Oklahoma (11/24/11)
FIELD GOALS MADE	18	at Arizona (1/26/12)
FIELD GOAL ATTEMPTS	42	USC (02/02/12)
FIELD GOAL PERCENTAGE	.346 (18-52)	at Arizona (1/26/12)
3 PT FIELD GOALS MADE	3	at Portland (11/20/11)
3 PT FG ATTEMPTS	9	at Portland (11/20/11)
3 PT FG PERCENTAGE	.190 (4-21)	at Arizona (1/26/12)
FREE THROWS MADE	7	at Oregon (02/11/12)
FREE THROW ATTEMPTS	11	vs Oklahoma (11/24/11)
	11	at Oregon (02/11/12)
FREE THROW PERCENTAGE	.455 (10-22)	at Utah (01/05/12)
REBOUNDS	22	OREGON (12/29/11)
ASSISTS	8	UCLA (02/04/12)
STEALS	0	at Arizona (1/26/12)
BLOCKED SHOTS	1	vs New Mexico (11/25/11)
	1	GRAMBLING STATE (11/30/11)
	1	at Colorado (01/07/12)
	1	STANFORD (01/19/12)
	1	at Arizona (1/26/12)
	1	at Arizona State (01/28/12)
	1	USC (02/02/12)
	1	UCLA (02/04/12)
TURNOVERS	7	STANFORD (01/19/12)
FOULS	8	USC (02/02/12)

OPPONENTS

HIGHS

POINTS	92	OREGON (12/29/11)
FIELD GOALS MADE	34	OREGON (12/29/11)
FIELD GOAL ATTEMPTS	63	at Washington (01/15/12)
FIELD GOAL PERCENTAGE	.694 (34-49)	OREGON (12/29/11)
3 PT FIELD GOALS MADE	15	at Arizona (1/26/12)
3 PT FG ATTEMPTS	33	STANFORD (01/19/12)
3 PT FG PERCENTAGE	.577 (15-26)	at Arizona (1/26/12)
FREE THROWS MADE	30	at Gonzaga (11/14/11)
FREE THROW ATTEMPTS	37	at Gonzaga (11/14/11)
FREE THROW PERCENTAGE	.833 (15-18)	at Oregon (02/11/12)
REBOUNDS	46	at Washington (01/15/12)
ASSISTS	23	at Arizona (1/26/12)
STEALS	10	OREGON STATE (12/31/11)
	10	at Idaho (12/07/11)
	10	at Portland (11/20/11)
BLOCKED SHOTS	7	vs Pepperdine (12/22/11)
	7	vs UC Riverside (11/27/11)
TURNOVERS	20	at Portland (11/20/11)
FOULS	25	EASTERN WASHINGTON (12/03/11)
	25	at Portland (11/20/11)
	25	SACRAMENTO STATE (11/17/11)

LOWS

POINTS	37	GRAMBLING STATE (11/30/11)
FIELD GOALS MADE	12	WESTERN OREGON (12/18/11)
FIELD GOAL ATTEMPTS	44	at Arizona State (01/28/12)
FIELD GOAL PERCENTAGE	.254 (15-59)	EASTERN WASHINGTON (12/03/11)
3 PT FIELD GOALS MADE	3	SANTA CLARA (12/11/11)
3 PT FG ATTEMPTS	13	at Idaho (12/07/11)
3 PT FG PERCENTAGE	.160 (4-25)	GRAMBLING STATE (11/30/11)
FREE THROWS MADE	2	USC (02/02/12)
FREE THROW ATTEMPTS	3	USC (02/02/12)
FREE THROW PERCENTAGE	.500 (5-10)	at Utah (01/05/12)
	.500 (10-20)	at Arizona (1/26/12)
REBOUNDS	20	USC (02/02/12)
ASSISTS	4	EASTERN WASHINGTON (12/03/11)
STEALS	2	STANFORD (01/19/12)
	2	ARIZONA (02/16/12)
BLOCKED SHOTS	0	EASTERN WASHINGTON (12/03/11)
	0	at Arizona (1/26/12)
TURNOVERS	7	vs UC Riverside (11/27/11)
FOULS	13	at Idaho (12/07/11)



2011-12 SEASON HIGHS/LOWS BY HALF

WASHINGTON STATE - FIRST HALF

HIGHS		
POINTS	48	SANTA CLARA (12/11/11)
FIELD GOALS MADE	17	(twice) at Oregon State (02/09/12)
FIELD GOAL ATTEMPTS	32	at Oregon State (02/09/12)
FIELD GOAL PERCENTAGE	.640 (16-25)	(twice) SANTA CLARA (12/11/11)
3 PT FIELD GOALS MADE	6	vs Oklahoma (11/24/11)
3 PT FG ATTEMPTS	14	(twice) at Idaho (12/07/11)
3 PT FG PERCENTAGE	.750 (6-8)	vs Oklahoma (11/24/11)
FREE THROWS MADE	13	SANTA CLARA (12/11/11)
FREE THROW ATTEMPTS	19	SANTA CLARA (12/11/11)
FREE THROW PERCENTAGE	1.000 (8-8)	STANFORD (01/19/12)
REBOUNDS	24	GRAMBLING STATE (11/30/11)
ASSISTS	11	OREGON (12/29/11)
STEALS	5	(four times) at Oregon (02/11/12)
BLOCKED SHOTS	4	vs Pepperdine (12/22/11)
TURNOVERS	13	vs New Mexico (11/25/11)
FOULS	10	OREGON (12/29/11)
	10	EASTERN WASHINGTON (12/03/11)

LOWS		
POINTS	23	at Utah (01/05/12)
FIELD GOALS MADE	8	at Colorado (01/07/12)
FIELD GOAL ATTEMPTS	21	(twice) at Colorado (01/07/12)
FIELD GOAL PERCENTAGE	.333 (9-27)	vs New Mexico (11/25/11)
3 PT FIELD GOALS MADE	1	(twice) at Arizona (1/26/12)
3 PT FG ATTEMPTS	5	at Portland (11/20/11)
3 PT FG PERCENTAGE	.111 (1-9)	STANFORD (01/19/12)
FREE THROWS MADE	1	at Utah (01/05/12)
FREE THROW ATTEMPTS	4	(four times) at Utah (01/05/12)
FREE THROW PERCENTAGE	.250 (1-4)	at Utah (01/05/12)
REBOUNDS	12	(twice) at Oregon (02/11/12)
ASSISTS	3	(twice) UCLA (02/04/12)
STEALS	0	(twice) at Arizona (1/26/12)
BLOCKED SHOTS	0	(seven times) at Oregon (2/11/12)
TURNOVERS	3	(twice) at Oregon State (02/09/12)
FOULS	1	USC (02/02/12)

OPPONENTS - FIRST HALF

HIGHS		
POINTS	54	OREGON (12/29/11)
FIELD GOALS MADE	20	OREGON (12/29/11)
FIELD GOAL ATTEMPTS	33	vs New Mexico (11/25/11)
FIELD GOAL PERCENTAGE	.714 (20-28)	OREGON (12/29/11)
3 PT FIELD GOALS MADE	10	at Gonzaga (11/14/11)
3 PT FG ATTEMPTS	20	at Gonzaga (11/14/11)
3 PT FG PERCENTAGE	.636 (7-11)	OREGON (12/29/11)
FREE THROWS MADE	10	at Oregon State (02/09/12)
FREE THROW ATTEMPTS	12	at Oregon State (02/09/12)
FREE THROW PERCENTAGE	1.000 (1-1)	(twice) at Oregon (02/11/12)
REBOUNDS	25	at Portland (11/20/11)
ASSISTS	12	(three times) at Arizona State (01/28/12)
STEALS	7	vs New Mexico (11/25/11)
BLOCKED SHOTS	4	(twice) vs Pepperdine (12/22/11)
TURNOVERS	11	at Oregon State (02/09/12)
FOULS	14	SACRAMENTO STATE (11/17/11)

LOWS		
POINTS	15	vs Pepperdine (12/22/11)
FIELD GOALS MADE	6	vs Pepperdine (12/22/11)
FIELD GOAL ATTEMPTS	23	(twice) at Oregon (02/11/12)
FIELD GOAL PERCENTAGE	.231 (6-26)	vs Pepperdine (12/22/11)
3 PT FIELD GOALS MADE	1	(twice) vs Pepperdine (12/22/11)
3 PT FG ATTEMPTS	3	vs Pepperdine (12/22/11)
3 PT FG PERCENTAGE	.125 (2-16)	GRAMBLING STATE (11/30/11)
FREE THROWS MADE	0	(three times) USC (02/02/12)
FREE THROW ATTEMPTS	0	(twice) USC (02/02/12)
FREE THROW PERCENTAGE	.000 (0-0)	(twice) USC (02/02/12)
REBOUNDS	10	USC (02/02/12)
ASSISTS	2	at Idaho (12/07/11)
STEALS	1	(four times) USC (02/02/12)
BLOCKED SHOTS	0	(seven times) UCLA (02/04/12)
TURNOVERS	2	(twice) at Arizona (1/26/12)
FOULS	3	CALIFORNIA (01/21/12)

WASHINGTON STATE - SECOND HALF

HIGHS		
POINTS	54	STANFORD (01/19/12)
FIELD GOALS MADE	16	(three times) STANFORD (01/19/12)
FIELD GOAL ATTEMPTS	34	at Gonzaga (11/14/11)
FIELD GOAL PERCENTAGE	.727 (16-22)	STANFORD (01/19/12)
3 PT FIELD GOALS MADE	7	at Gonzaga (11/14/11)
3 PT FG ATTEMPTS	14	(twice) UCLA (02/04/12)
3 PT FG PERCENTAGE	.750 (3-4)	STANFORD (01/19/12)
FREE THROWS MADE	19	STANFORD (01/19/12)
FREE THROW ATTEMPTS	21	STANFORD (01/19/12)
FREE THROW PERCENTAGE	.923 (12-13)	SANTA CLARA (12/11/11)
REBOUNDS	24	EASTERN WASHINGTON (12/03/11)
ASSISTS	11	SACRAMENTO STATE (11/17/11)
STEALS	7	at Portland (11/20/11)
BLOCKED SHOTS	4	EASTERN WASHINGTON (12/03/11)
TURNOVERS	11	at Portland (11/20/11)
FOULS	19	(twice) at Arizona State (01/28/12)

LOWS		
POINTS	19	vs Oklahoma (11/24/11)
FIELD GOALS MADE	6	vs Oklahoma (11/24/11)
FIELD GOAL ATTEMPTS	19	USC (02/02/12)
FIELD GOAL PERCENTAGE	.222 (6-27)	vs Oklahoma (11/24/11)
3 PT FIELD GOALS MADE	1	(four times) at Oregon State (02/09/12)
3 PT FG ATTEMPTS	2	at Oregon State (02/09/12)
3 PT FG PERCENTAGE	.111 (1-9)	vs Oklahoma (11/24/11)
FREE THROWS MADE	1	UCLA (02/04/12)
FREE THROW ATTEMPTS	2	UCLA (02/04/12)
FREE THROW PERCENTAGE	.500 (7-14)	(four times) ARIZONA (02/16/12)
REBOUNDS	8	at Washington (01/15/12)
ASSISTS	4	(five times) ARIZONA (02/16/12)
STEALS	0	(four times) at Arizona (1/26/12)
BLOCKED SHOTS	0	(five times) UCLA (02/04/12)
TURNOVERS	1	at Utah (01/05/12)
FOULS	5	(twice) at Idaho (12/07/11)

OPPONENTS - SECOND HALF

HIGHS		
POINTS	50	at Washington (01/15/12)
FIELD GOALS MADE	16	vs UC Riverside (11/27/11)
FIELD GOAL ATTEMPTS	36	at Oregon State (02/09/12)
FIELD GOAL PERCENTAGE	.667 (14-21)	OREGON (12/29/11)
3 PT FIELD GOALS MADE	8	at Arizona (1/26/12)
3 PT FG ATTEMPTS	19	STANFORD (01/19/12)
3 PT FG PERCENTAGE	.750 (6-8)	at Colorado (01/07/12)
FREE THROWS MADE	25	at Gonzaga (11/14/11)
FREE THROW ATTEMPTS	29	at Gonzaga (11/14/11)
FREE THROW PERCENTAGE	1.000 (6-6)	at Idaho (12/07/11)
REBOUNDS	24	at Washington (01/15/12)
ASSISTS	12	at Arizona (1/26/12)
STEALS	7	(twice) at Arizona State (01/28/12)
BLOCKED SHOTS	5	UCLA (02/04/12)
TURNOVERS	10	(three times) OREGON (12/29/11)
FOULS	15	STANFORD (01/19/12)

LOWS		
POINTS	17	WESTERN OREGON (12/18/11)
FIELD GOALS MADE	4	WESTERN OREGON (12/18/11)
FIELD GOAL ATTEMPTS	16	at Arizona State (01/28/12)
FIELD GOAL PERCENTAGE	.174 (4-23)	WESTERN OREGON (12/18/11)
3 PT FIELD GOALS MADE	1	(four times) at Arizona State (01/28/12)
3 PT FG ATTEMPTS	3	at Arizona State (01/28/12)
3 PT FG PERCENTAGE	.100 (1-10)	EASTERN WASHINGTON (12/03/11)
FREE THROWS MADE	2	(twice) USC (02/02/12)
FREE THROW ATTEMPTS	3	USC (02/02/12)
FREE THROW PERCENTAGE	.455 (5-11)	at Arizona (1/26/12)
REBOUNDS	9	at Arizona State (01/28/12)
ASSISTS	1	EASTERN WASHINGTON (12/03/11)
STEALS	0	(three times) ARIZONA (02/16/12)
BLOCKED SHOTS	0	(eight times) ARIZONA (02/16/12)
TURNOVERS	2	(three times) at Oregon (02/11/12)
FOULS	5	at Idaho (12/07/11)



2011-12 INDIVIDUAL HIGHS

WASHINGTON STATE

Points	34	Motum, Brock at Arizona State (01/28/12)
	33	Aden, Faisal vs Stanford (01/19/12)
	28	Motum, Brock vs Arizona (02/16/12)
	27	Motum, Brock at Utah (01/05/12)
	27	Motum, Brock vs Santa Clara (12/11/11)
Field Goals Made	13	Motum, Brock at Arizona State (01/28/12)
	10	Aden, Faisal vs Stanford (01/19/12)
	10	Motum, Brock at Utah (01/05/12)
	10	Motum, Brock vs Oregon State (12/31/11)
	10	Aden, Faisal vs New Mexico (11/25/11)
Field Goal Att.	19	Motum, Brock at Arizona State (01/28/12)
	18	Motum, Brock vs UCLA (02/04/12)
FG Pct (min 5 made)	1.000 (7-7)	Enquist, Charlie vs Santa Clara (12/11/11)
	1.000 (5-5)	Shelton, D.J. at Oregon State (02/09/12)
3-Point FG Made	5	Lacy, DaVonte vs Oregon (12/29/11)
	4	Lodwick, Abe vs California (01/21/12)
3-Point FG Att.	8	Lacy, DaVonte at Arizona State (01/28/12)
	8	Lacy, DaVonte at Washington (01/15/12)
3-Pt FG Pct (min 2 made)	1.000 (3-3)	Lacy, DaVonte at Oregon State (02/09/12)
	1.000 (3-3)	Motum, Brock at Utah (01/05/12)
	1.000 (2-2)	Moore, Reggie vs Stanford (01/19/12)
	1.000 (2-2)	Lodwick, Abe at Utah (01/05/12)
	1.000 (2-2)	Ladd, Mike vs Western Oregon (12/18/11)
Free Throws Made	13	Aden, Faisal vs Stanford (01/19/12)
	10	Motum, Brock vs Arizona (02/16/12)
	10	Motum, Brock at Arizona (01/26/12)
Free Throw Att.	18	Motum, Brock vs Arizona (02/16/12)
	13	Aden, Faisal vs Stanford (01/19/12)
FT Pct (min 3 made)	1.000 (13-13)	Aden, Faisal vs Stanford (01/19/12)
	1.000 (10-10)	Motum, Brock at Arizona (01/26/12)
	1.000 (8-8)	Lacy, DaVonte vs Eastern Washington (12/03/11)
	1.000 (6-6)	Motum, Brock at Arizona State (01/28/12)
	1.000 (6-6)	Aden, Faisal at Washington (01/15/12)
	1.000 (4-4)	Moore, Reggie vs Arizona (02/16/12)
	1.000 (4-4)	Shelton, D.J. at Oregon State (02/09/12)
	1.000 (4-4)	Ladd, Mike vs USC (02/02/12)
	1.000 (4-4)	Lacy, DaVonte at Arizona State (01/28/12)
	1.000 (4-4)	Shelton, D.J. at Arizona (01/26/12)
	1.000 (4-4)	Capers, Marcus vs California (01/21/12)
	1.000 (4-4)	Motum, Brock vs Stanford (01/19/12)
	1.000 (4-4)	Motum, Brock at Colorado (01/07/12)
	1.000 (4-4)	Lacy, DaVonte at Colorado (01/07/12)
	1.000 (4-4)	Lacy, DaVonte vs Pepperdine (12/22/11)
	1.000 (4-4)	Enquist, Charlie vs Santa Clara (12/11/11)
	1.000 (3-3)	Lacy, DaVonte vs Stanford (01/19/12)
	1.000 (3-3)	Shelton, D.J. vs Oregon State (12/31/11)
	1.000 (3-3)	Moore, Reggie vs Santa Clara (12/11/11)
	1.000 (3-3)	Kernich-Drew, Dexter vs Santa Clara (12/11/11)
	1.000 (3-3)	Lacy, DaVonte vs Sacramento State (11/17/11)
Rebounds	13	Enquist, Charlie vs Eastern Washington (12/03/11)
	11	Motum, Brock vs UCLA (02/04/12)
Assists	11	Moore, Reggie at Oregon State (02/09/12)
	9	Moore, Reggie vs Oregon State (12/31/11)
Steals	5	Aden, Faisal vs Sacramento State (11/17/11)
	4	Moore, Reggie at Oregon State (02/09/12)
Blocked Shots	2	Shelton, D.J. vs Arizona (02/16/12)
	2	Shelton, D.J. at Oregon (02/11/12)
	2	Capers, Marcus vs Oregon (12/29/11)
	2	Enquist, Charlie vs Pepperdine (12/22/11)
	2	Shelton, D.J. vs Western Oregon (12/18/11)
	2	Motum, Brock vs Western Oregon (12/18/11)
	2	Enquist, Charlie vs Santa Clara (12/11/11)
	2	Capers, Marcus at Idaho (12/07/11)
	2	Capers, Marcus at Portland (11/20/11)
	2	Enquist, Charlie at Portland (11/20/11)
	2	Aden, Faisal vs Sacramento State (11/17/11)
	2	Capers, Marcus at Gonzaga (11/14/11)
Turnovers	9	Moore, Reggie vs Eastern Washington (12/03/11)
	6	Motum, Brock at Arizona State (01/28/12)
	6	Motum, Brock vs Eastern Washington (12/03/11)
	6	Moore, Reggie vs Oklahoma (11/24/11)
	6	Aden, Faisal at Portland (11/20/11)

OPPONENTS

Points	33	Cunningham, Jared at Oregon State (02/09/12)
	33	PANGOS, Kevin at Gonzaga (11/14/11)
	30	Ross, Terrence at Washington (01/15/12)
	28	Brown, Carlton at Colorado (01/07/12)
	23	Singler, E.J. at Oregon (02/11/12)
	23	Ashaolu, Olu vs Oregon (12/29/11)
Field Goals Made	10	Cunningham, Jared at Oregon State (02/09/12)
	9	Ross, Terrence at Washington (01/15/12)
	9	Brown, Carlton at Colorado (01/07/12)
	9	Ashaolu, Olu vs Oregon (12/29/11)
	9	DICKSON, John vs Sacramento State (11/17/11)
	9	PANGOS, Kevin at Gonzaga (11/14/11)
Field Goal Att.	21	Ross, Terrence at Washington (01/15/12)
	20	Cunningham, Jared at Oregon State (02/09/12)
FG Pct (min 5 made)	1.000 (8-8)	Owens, Josh vs Stanford (01/19/12)
	1.000 (5-5)	Bachynski, Jordan at Arizona State (01/28/12)
3-Point FG Made	9	PANGOS, Kevin at Gonzaga (11/14/11)
	6	Ross, Terrence at Washington (01/15/12)
	6	Brown, Carlton at Colorado (01/07/12)
3-Point FG Att.	13	Starks, Ahmad at Oregon State (02/09/12)
	13	PANGOS, Kevin at Gonzaga (11/14/11)
3-Pt FG Pct (min 2 made)	.800 (4-5)	Lavender, Brendon at Arizona (01/26/12)
	.750 (3-4)	Hill, Solomon at Arizona (01/26/12)
	.750 (3-4)	Joseph, Devoe vs Oregon (12/29/11)
	.750 (3-4)	Kingma, Brett vs Oregon (12/29/11)
	.750 (3-4)	Quick, Austin vs UC Riverside (11/27/11)
Free Throws Made	13	SACRE, Robert at Gonzaga (11/14/11)
	10	Cunningham, Jared vs Oregon State (12/31/11)
Free Throw Att.	13	Wroten, Tony at Washington (01/15/12)
	13	SACRE, Robert at Gonzaga (11/14/11)
FT Pct (min 3 made)	1.000 (13-13)	SACRE, Robert at Gonzaga (11/14/11)
	1.000 (6-6)	PANGOS, Kevin at Gonzaga (11/14/11)
	1.000 (5-5)	CHIVERTON, Collin vs Eastern Washington (12/03/11)
	1.000 (4-4)	Perry, Jesse vs Arizona (02/16/12)
	1.000 (4-4)	Hill, Solomon at Arizona (01/26/12)
	1.000 (4-4)	N'Diaye, Aziz at Washington (01/15/12)
	1.000 (4-4)	LOWERY, Joshua vs Pepperdine (12/22/11)
	1.000 (4-4)	Gordon, Drew vs New Mexico (11/25/11)
	1.000 (3-3)	Singler, E.J. at Oregon (02/11/12)
	1.000 (3-3)	MOORE, Corbin vs Pepperdine (12/22/11)
	1.000 (3-3)	Pledger, Steven vs Oklahoma (11/24/11)
Rebounds	14	Ross, Terrence at Washington (01/15/12)
	12	EBERHARD, Joe vs Sacramento State (11/17/11)
Assists	12	GARRITY, Dylan vs Sacramento State (11/17/11)
	10	Grooms, Sam vs Oklahoma (11/24/11)
Steals	6	COLIMON, Cliff vs Eastern Washington (12/03/11)
	4	Anderson, Jerime vs UCLA (02/04/12)
	4	Cunningham, Jared vs Oregon State (12/31/11)
	4	Starks, Ahmad vs Oregon State (12/31/11)
	4	Wheadon, Blair vs Western Oregon (12/18/11)
	4	Geiger, Deremy at Idaho (12/07/11)
Blocked Shots	3	Collier, Devon at Oregon State (02/09/12)
	3	Bradshaw, Kevin vs UC Riverside (11/27/11)
	3	SACRE, Robert at Gonzaga (11/14/11)
Turnovers	6	DOUGLAS, Tim at Portland (11/20/11)
	6	RODGERS, Derrick at Portland (11/20/11)



GAME 1 • Washington State at No. 22/23 Gonzaga
11/14/11 9 p.m. at McCarthy Athletic Center (Spokane, Wash.)

VISITORS: Washington State (0-1)

#	Player	Total		3-Ptr		FT		Rebounds			PF	TP	A	TO	Blk	Stl	Min	
		FG	FGA	FG	FGA	FT	FTA	Off	Def	Tot								
12	Motum, Brock	f	7	12	1	2	2	5	2	6	8	3	17	4	4	1	0	37
40	Enquist, Charlie	f	2	2	0	0	0	0	1	3	4	2	4	1	0	0	0	20
00	Capers, Marcus	g	2	4	0	0	2	4	1	2	3	4	6	1	1	2	2	25
01	Moore, Reggie	g	3	7	1	2	7	8	0	0	0	3	14	5	4	0	3	31
11	Aden, Faisal	g	5	12	2	4	0	0	1	6	7	0	12	1	3	0	0	26
02	Ladd, Mike	g	4	9	2	5	3	4	0	0	0	4	13	1	0	0	2	25
03	Lacy, DaVonte	g	4	7	3	6	0	0	1	3	4	3	11	2	1	0	0	14
05	Dilorio, Will	g	1	3	0	0	0	0	2	0	2	5	2	0	0	0	1	6
23	Shelton, D.J.	g	0	3	0	0	0	0	1	0	1	1	0	0	0	1	0	9
44	Simon, Patrick	g	1	2	0	1	0	0	0	1	1	2	2	0	0	0	1	7
TEAM										1	2	3						
Totals.....			29	61	9	20	14	21	10	23	33	27	81	15	13	4	9	200

HOME TEAM: No. 22/23 Gonzaga (2-0)

		Total				3-Ptr		Rebounds											
#/ Player		FG	FGA	FG	FGA	FT	FTA	Off	Def	Tot	PF	TP	A	TO	Blk	Stl	Min		
20	HARRIS, Elias	f	6	13	0	1	2	5	5	6	11	0	14	1	3	0	1	36	
00	SACRE, Robert	c	1	2	0	0	13	13	3	7	10	4	15	1	2	3	2	23	
02	CARTER, M.	g	1	4	0	1	0	0	1	0	1	3	2	2	2	0	1	17	
04	PANGOS, Kevin	g	9	16	9	13	6	6	0	2	2	3	33	6	2	0	0	37	
30	HART, Mike	g	0	2	0	2	2	2	1	3	4	3	2	1	2	1	2	21	
05	BELL JR., GARY	g	3	8	2	5	6	9	1	1	2	1	14	1	1	0	1	24	
11	STOCKTON, David	g	0	1	0	1	0	0	0	3	3	0	0	2	1	0	0	7	
15	SPANGLER, Ryan	g	0	1	0	0	1	2	1	2	3	1	1	0	0	0	0	5	
22	MOENINGHOFF, M.	g	2	6	2	6	0	0	1	0	1	0	6	3	0	0	0	15	
35	DOWER, Sam	g	1	3	0	0	0	0	0	2	2	4	2	0	0	1	1	15	
TEAM									1	1	2								
Totals.....			23	56	13	29	30	37	14	27	41	19	89	17	13	5	8	200	

Officials: Deron White, Bobby McRoy, Tom Wood

Technical fouls: Washington State-None. Gonzaga-None.

Attendance: 6000

Score by Periods 1st 2nd Total

Washington State 32 49 81

Gonzaga 41 48 89

GU's Pangos ties school record with 9 3-pointers,

held by Dan Dickau (2001-2002).

GAME 3 • Washington State at Portland
11/20/11 7 p.m. at Chiles Center (Portland, Ore.)

VISITORS: Washington State (2-1)

#	Player	Total		3-Ptr		Rebounds			PF	TP	A	TO	Blk	Stl	Min			
		FG	FGA	FG	FGA	FT	FTA	Off								Def	Tot	
12	Motum, Brock	f	6	9	0	0	1	2	2	2	4	4	13	3	1	0	1	29
40	Enquist, Charlie	f	2	2	0	0	4	5	0	4	4	2	8	0	0	2	2	25
00	Capers, Marcus	g	2	3	0	0	2	2	0	1	1	3	6	0	1	2	0	28
01	Moore, Reggie	g	2	6	0	0	2	4	0	6	6	5	6	8	3	0	3	33
11	Aden, Faisal	g	7	14	1	2	6	7	0	5	5	1	21	2	6	0	3	24
02	Ladd, Mike	g	3	8	1	4	1	1	1	1	2	4	8	0	1	0	0	18
03	Lacy, DaVonte	g	3	5	1	3	4	6	0	2	2	3	11	3	3	0	3	20
05	Dilorio, Will	g	1	1	0	0	0	1	0	0	0	0	2	0	0	0	0	8
23	Shelton, D.J.	g	2	2	0	0	4	6	1	3	4	3	8	0	2	1	0	15
TEAM																		
Totals.....			28	50	3	9	24	34	4	24	28	25	83	16	17	5	12	200

HOME TEAM: Portland (2-2)

		Total		3-Ptr		Rebounds												
#	Player	FG	FGA	FG	FGA	FT	FTA	Off	Def	Tot	PF	TP	A	TO	Blk	Stl	Min	
32	NICHOLAS, Ryan	f	4	10	1	3	2	3	2	5	7	3	11	2	2	0	1	24
33	MITROVIC, N.	f	4	12	2	8	1	2	2	0	2	1	11	0	1	0	1	26
14	BARKER, Riley	c	0	2	0	0	2	3	2	2	4	2	2	0	0	1	1	21
11	DOUGLAS, Tim	g	2	4	0	0	4	5	1	3	4	2	8	4	6	0	2	33
35	CARR, David	g	3	6	1	4	0	0	2	2	4	4	7	1	2	0	0	20
00	BAILEY, Kevin	g	2	9	1	3	9	10	1	1	2	3	14	1	2	0	3	17
03	RILEY, Tanner	g	0	2	0	1	0	0	0	1	1	0	0	0	0	0	0	3
12	VAN DER MARS, T.	g	5	6	0	0	0	1	2	3	5	4	10	1	1	0	1	19
15	RODGERS, Derrick	g	4	6	0	0	2	4	2	2	4	2	10	2	6	0	1	24
22	CASON, Dorian	g	0	3	0	2	0	0	1	3	4	4	0	0	0	0	0	13
TEAM									1	1	2							
Totals.....			24	60	5	21	20	28	16	23	39	25	73	11	20	1	10	200

Officials: Michael Eggers, Ken Ditty, Michael Irving

Technical fouls: Washington State-None. Portland-None.

Attendance: 3613

Score by Periods 1st 2nd Total

Washington State 43 40 83

Portland 33 40 73

GAME 2 • Sacramento State at Washington State
11/17/11 7:05 p.m. at Beasley Coliseum (Pullman, Wash.)

VISITORS: Sacramento State (2-1)

		Total		3-Ptr		Rebounds												
##	Player	FG	FGA	FG	FGA	FT	FTA	Off	Def	Tot	PF	TP	A	TO	Blk	Stl	Min	
32	DICKSON, John	f	9	18	1	2	2	4	1	5	6	1	21	0	3	2	0	33
04	RAKOCEVIC, Petec		2	4	0	0	0	0	2	2	2	4	4	0	0	0	0	13
03	EBERHARD, Joe	g	6	13	2	6	2	2	4	8	12	3	16	0	1	0	1	38
05	GARRITY, Dylan	g	2	5	1	3	0	0	0	3	3	4	5	12	3	0	2	39
22	HOFFMAN, Heath	g	3	8	2	4	1	2	2	0	2	4	9	2	4	0	0	27
11	DEMALLEVILLE, J.	g	0	2	0	1	1	2	0	0	0	0	1	1	1	0	1	11
12	GROOM, Kendall		0	0	0	0	0	0	0	0	0	0	0	0	0	0	0	3
20	JACKSON, Walter		1	2	0	0	0	0	1	2	3	4	2	0	2	0	2	21
44	McCARVER, Josh		4	4	0	0	2	2	1	1	2	5	10	0	3	0	0	15
TEAM										2	2	4						
Totals.....			27	56	6	16	8	12	11	23	34	25	68	15	17	2	6	197

HOME TEAM: Washington State (1-1)

#	Player	Total		3-Ptr		Rebounds		PF	TP	A	TO	Blk	Stl	Min					
		FG	FGA	FG	FGA	FT	FTA								Off	Def	Tot		
05	Dilorio, Will	f	1	3	0	0	0	2	2	1	3	2	2	1	1	0	0	25	
12	Motum, Brock	f	9	12	1	2	4	6	4	4	8	3	23	0	5	0	0	29	
00	Capers, Marcus	g	1	4	0	0	3	4	0	3	3	1	5	2	1	0	1	23	
02	Ladd, Mike	g	0	6	0	4	1	2	1	3	4	3	1	2	0	0	0	20	
03	Lacy, DaVonte	g	5	9	2	6	3	3	1	1	2	1	15	5	0	0	2	31	
01	Moore, Reggie	g	0	3	0	2	3	6	0	1	1	1	2	3	4	0	0	1	28
11	Aden, Faisal	g	7	9	2	4	2	2	0	3	3	1	18	2	5	2	5	26	
23	Shelton, D.J.	g	2	3	0	0	3	7	1	0	1	0	7	0	0	0	1	8	
34	Kernich-Drew, Dexter	g	1	2	1	2	0	0	0	0	0	0	3	0	0	0	0	5	
40	Enquist, Charlie	g	1	2	0	0	0	0	2	0	2	0	2	0	0	0	0	5	
TEAM								1	3	4				1					
Totals			27	53	6	20	19	32	12	19	31	13	79	16	13	2	10	197	



GAME 13 • Washington State vs. Oregon
12/29/11 6 p.m. at Spokane Arena (Spokane, Wash.)

VISITORS: Oregon (10-3, 1-0)

#	Player		Total		3-Ptr		FT	FTA	Rebounds			PF	TP	A TO	Blk	Stl	Min	
			FG	FGA	FG	FGA			Off	Def	Tot							
25	Singler, E.J.	f	5	10	1	5	2	2	1	7	8	4	13	4	2	0	1	27
55	Woods, Tony	c	2	3	0	0	0	1	1	1	2	3	4	0	2	0	0	10
03	Sim, Garrett	g	4	4	1	1	3	4	0	2	2	1	12	2	1	0	0	35
10	Lloyd, Johnathan	g	2	4	0	1	0	0	0	1	1	1	4	4	1	0	1	26
34	Joseph, Devoe	g	6	9	3	4	2	2	0	1	1	2	17	7	5	0	1	32
04	Lucenti, Nicholas		0	0	0	0	0	0	0	0	0	0	0	0	0	0	2	
05	Ashaolu, Olu		9	11	0	0	5	12	1	9	10	4	23	0	2	1	0	24
12	Kingma, Brett		3	4	3	4	0	0	0	0	0	2	9	2	0	0	0	14
23	Jacob, Jeremy		1	2	0	0	0	0	1	1	2	2	2	0	1	0	0	17
33	Emory, Carlos		2	2	1	1	3	4	2	2	4	3	8	1	2	0	0	13
TEAM										2	4							
Totals.....			34	49	9	16	15	25	8	26	34	22	92	20	17	1	3	200

HOME TEAM: Washington State (8-5, 0-1)

#	Player	Total		3-Ptr		FT	FTA	Rebounds			PF	TP	A	TO	Blk	Stl	Min	
		FG	FGA	FG	FGA			Off	Def	Tot								
12	Motum, Brock	f	3	8	0	2	6	7	3	2	5	3	12	3	3	0	25	
40	Enquist, Charlie	f	0	0	0	0	0	0	1	1	2	0	0	0	0	0	10	
00	Capers, Marcus	g	2	4	0	0	0	0	1	2	3	5	4	2	0	2	0	27
01	Moore, Reggie	g	4	12	1	3	5	6	1	0	1	0	14	4	2	0	1	31
03	Lacy, DaVonte	g	7	9	5	6	0	2	1	1	2	5	19	3	1	0	2	24
02	Ladd, Mike		1	2	0	1	2	4	0	1	1	0	4	4	0	0	0	15
05	Dilorio, Will		0	0	0	0	0	0	1	1	2	0	0	0	0	0	0	11
11	Aden, Faisal		2	10	0	2	0	0	0	2	2	1	4	0	1	0	3	20
23	Shelton, D.J.		3	4	0	0	1	1	0	1	1	1	7	1	2	0	0	12
31	Lodwick, Abe		2	5	2	5	0	0	0	2	2	3	6	1	1	0	1	16
34	Kernich-Drew, Dexter		1	2	0	1	0	0	0	1	1	2	2	0	0	0	1	7
44	Simon, Patrick		1	1	1	1	0	0	0	0	0	0	3	0	0	0	0	2
TEAM																		
Totals.....			26	57	9	21	14	20	8	14	22	22	75	18	10	2	8	200

Officials: Verne Harris, Michael Reed, Michael Irving
Technical fouls: Oregon-None. Washington State-None.
Attendance: 9889
Score by Periods: 1st 2nd Total
Oregon 54 38 92
Washington State 34 41 75

GAME 15 • Washington State at Utah
1/5/12 7 p.m. MT at Huntsman Center (Salt Lake City, Utah)

VISITORS: Washington State (9-6, 1-2)

#	Player		Total		3-Ptr		FT	FTA	Rebounds			PF	TP	A	TO	Blk	Stl	Min
			FG	FGA	FG	FGA			Off	Def	Tot							
12	Motum, Brock	f	10	12	3	3	4	6	3	5	8	1	27	3	2	0	0	37
40	Enquist, Charlie	f	1	3	0	0	0	2	1	4	5	4	2	0	1	1	1	17
00	Capers, Marcus	g	0	1	0	1	1	2	0	3	3	2	1	1	1	0	1	35
01	Moore, Reggie	g	3	11	1	2	1	1	0	4	4	2	8	3	2	0	1	33
03	Lacy, DaVonte	g	1	4	0	3	2	4	0	3	3	0	4	3	2	0	0	27
02	Ladd, Mike		0	1	0	0	1	3	1	3	4	2	1	1	0	0	0	22
11	Aden, Faisal		4	12	2	4	1	2	0	0	0	2	11	1	2	0	0	17
23	Shelton, D.J.		0	1	0	0	0	2	1	0	1	1	0	0	0	0	1	7
31	Lodwick, Abe		2	3	2	2	0	0	1	4	5	1	6	4	0	1	0	28
34	Kernich-Drew, Dexter		0	0	0	0	0	0	0	0	0	0	0	0	0	0	0	2
TEAM																		
Totals.....			21	48	8	15	10	22	7	26	33	15	60	16	10	2	4	225

HOME TEAM: Utah (4-10, 1-1)

#	Player		Total		3-Ptr		FT	FTA	Rebounds			PF	TP	A TO	Blk	Stl	Min	
			FG	FGA	FG	FGA			Off	Def	Tot							
10	Farr, Dijon	f	5	9	0	0	0	0	3	2	5	5	10	1	2	0	2	31
43	Martin, Cedric	f	2	4	1	3	0	0	1	7	8	2	5	5	0	0	1	42
42	Washburn, Jason	c	5	9	0	0	1	2	0	4	4	2	11	1	2	2	0	37
00	Hines, Chris	g	3	9	2	8	0	0	0	2	2	1	8	0	0	0	0	34
15	Watkins, Josh	g	7	18	2	7	4	6	1	6	7	4	20	6	2	0	1	40
05	Storey, Kareem		2	4	0	2	0	2	0	2	2	3	4	2	1	0	1	19
21	Dawson, Javon		2	2	0	0	0	0	0	1	1	2	4	0	2	1	0	22
TEAM									2	2	4							
Totals.....			26	55	5	20	5	10	7	26	33	19	62	15	9	3	5	225

Officials: Kevin Brill, Deron White, Don McAllister
Technical fouls: Washington State-None. Utah-None.
Attendance: 8412
Score by Periods: 1st 2nd OT Total
Washington State 23 31 6 60
Utah 29 25 8 62

GAME 14 • Washington State vs. Oregon State
12/31/11 3 p.m. at Spokane Arena (Spokane, Wash.)

VISITORS: Oregon State (10-4, 0-2)

#	Player	Total		3-Ptr		FT	FTA	Rebounds			PF	TP	A	TO	Blk	Stl	Min	
		FG	FGA	FG	FGA			Off	Def	Tot								
11	Burton, Joe	f	7	11	0	0	0	0	2	5	7	2	14	3	3	0	1	29
12	Brandt, Angus	f	3	7	0	0	1	2	2	1	3	3	7	0	1	2	0	27
44	Collier, Devon	f	0	3	0	0	2	4	1	2	3	0	2	1	1	0	0	14
01	Cunningham, J.	g	5	11	1	5	10	11	0	0	0	3	21	4	4	0	4	35
03	Starks, Ahmad	g	6	14	5	12	1	2	0	2	2	1	18	2	1	0	4	37
02	Barton, Challe		1	4	1	4	0	0	0	2	2	5	3	4	1	0	0	20
15	Moreland, Eric		3	4	0	0	2	3	4	6	10	3	8	0	3	2	1	27
55	Nelson, Roberto		1	3	1	2	0	0	0	1	1	4	3	3	1	0	0	11
TEAM									2	1	3							
Totals.....			26	57	8	23	16	22	11	20	31	21	76	17	15	4	10	200

HOME TEAM: Washington State (9-5, 1-1)

		Total		3-Ptr		Rebounds												
##	Player	FG	FGA	FG	FGA	FT	FTA	Off	Def	Tot	PF	TP	A TO	Blk	Stl	Min		
12	Motum, Brock	f	10	15	3	5	3	4	3	5	8	3	26	1	5	1	1	36
40	Enquist, Charlie	f	1	4	0	0	0	0	1	3	4	1	2	0	0	1	0	23
00	Capers, Marcus	g	2	3	0	0	6	8	1	4	5	2	10	4	1	0	1	32
01	Moore, Reggie	g	3	5	0	1	2	2	0	1	1	3	8	9	1	0	1	35
03	Lacy, DaVonte	g	6	12	3	5	3	4	0	3	3	1	18	0	4	0	2	31
02	Ladd, Mike		3	7	0	0	1	1	0	3	3	1	7	0	1	0	0	13
11	Aden, Faisal		0	1	0	0	1	2	0	0	0	0	1	0	3	0	0	9
23	Shelton, D.J.		3	3	0	0	3	3	2	1	3	3	9	0	0	0	0	12
31	Lodwick, Abe		0	2	0	1	0	0	0	1	1	1	0	1	1	0	0	9
TEAM																		
Totals.....			28	52	6	12	19	24	8	22	30	15	81	15	16	2	5	200

Officials: Chris Rastatter, Bobby McRoy, Rick Batsell
Technical fouls: Oregon State-None. Washington State-None.
Attendance: 8282
Score by Periods: 1st 2nd Total
Oregon State 35 41 76
Washington State 40 41 81

GAME 16 • Washington State vs. Colorado
01/07/12 2:06 p.m. at Coors Events Center (Boulder, Colo.)

VISITORS: Washington State (9-7, 1-3)

		TOTAL		3-Ptr		Rebounds												
##	Player	FG	FGA	FG	FGA	FT	FTA	Off	Def	Tot	PF	TP	A TO	Blk	Stl	Min		
12	Motum, Brock	f	2	10	1	3	4	4	2	2	4	5	9	1	2	0	1	35
40	Enquist, Charlie	f	0	1	0	0	2	2	1	3	4	2	2	1	1	0	1	17
00	Capers, Marcus	g	3	4	0	0	1	2	4	3	7	0	7	0	1	0	0	31
03	Lacy, DaVonte	g	0	2	0	1	4	4	0	1	1	2	4	1	1	1	0	21
34	Kernich-Drew, Dexter	g	2	7	2	5	0	1	0	2	2	2	6	0	2	0	0	14
01	Moore, Reggie	5	12	3	5	1	2	0	2	2	2	14	4	0	0	2	2	27
02	Ladd, Mike	0	2	0	1	0	2	0	1	1	3	0	0	0	0	0	0	8
11	Aden, Faisal	5	11	0	3	2	2	1	0	1	1	12	1	2	0	2	2	28
23	Shelton, D.J.	0	0	0	0	0	0	0	1	1	0	0	0	0	2	0	1	1
31	Lodwick, Abe	2	3	2	3	0	0	2	6	8	1	6	1	2	0	0	1	18
TEAM																		
Totals.....		19	52	8	21	14	19	10	21	31	18	60	9	13	1	7	200	



GAME 17 • Washington State at Washington
1/15/12 4 p.m. at Alaska Airlines Arena (Seattle)

VISITORS: Washington State (9-8, 1-4)

##	Player	Total		3-Ptr		Rebounds		PF	TP	A TO	Blk	Stl	Min
		FG	FGA	FG	FGA	Off	Def						
12	Motum, Brock	f	7	11	2	4	1	2	0	2	2	3	17
40	Enquist, Charlie	f	0	2	0	0	0	1	0	0	0	0	9
00	Capers, Marcus	g	2	2	0	0	1	1	1	2	3	4	5
01	Moore, Reggie	g	2	7	1	4	2	4	0	2	2	2	7
03	Lacy, DaVonte	g	3	9	3	8	1	1	0	1	1	1	10
11	Aden, Faisal	g	6	13	0	3	6	6	1	6	7	1	18
23	Shelton, D.J.	g	2	2	0	0	1	1	1	2	3	3	5
31	Lodwick, Abe	g	1	5	1	5	0	0	0	2	2	5	3
44	Simon, Patrick	g	0	0	0	0	0	0	0	0	0	0	0
TEAM													
Totals.....		23	51	7	24	12	16	4	20	24	21	65	13

HOME TEAM: Washington (11-6, 4-1)

##	Player	Total		3-Ptr		Rebounds		PF	TP	A TO	Blk	Stl	Min
		FG	FGA	FG	FGA	Off	Def						
30	Simmons, Desmond	f	1	6	0	0	0	0	4	3	7	3	2
05	N'Diaye, Aziz	c	4	5	0	0	4	4	3	5	8	1	12
00	Gaddy, Abdul	g	2	10	1	6	0	0	1	3	4	2	5
14	Wroten, Tony	g	3	14	0	3	7	13	3	0	3	5	13
31	Ross, Terrence	g	9	21	6	12	6	9	5	9	14	4	30
04	Stewart, Hikeem	g	0	0	0	0	0	0	0	0	0	1	0
10	Breunig, Martin	g	0	0	0	0	0	0	0	0	0	0	0
40	Kemp, Jr., Shawn	g	0	0	0	0	0	0	0	0	0	0	0
44	Gant, Darnell	g	5	7	3	5	0	2	5	3	8	2	13
TEAM													
Totals.....		24	63	10	26	17	28	22	24	46	20	75	14

Officials: Chris Rastatter, Michael Reed, Michael Irving
Technical fouls: Washington State-None. Washington-TEAM.

Attendance: 10000

Score by Periods	1st	2nd	Total
Washington State	31	34	65
Washington	25	50	75

GAME 19 Washington State vs. California
1/21/12 3:05 p.m. at Beasley Coliseum (Pullman, Wash)

VISITORS: California (16-5, 6-2)

##	Player	Total		3-Ptr		Rebounds		PF	TP	A TO	Blk	Stl	Min
		FG	FGA	FG	FGA	Off	Def						
22	Kamp, Harper	f	5	10	0	0	2	2	0	3	3	4	12
45	Kravish, David	f	4	5	0	0	3	4	1	2	3	1	11
01	Cobbs, Justin	g	5	12	1	4	4	6	0	2	2	0	15
02	Gutierrez, Jorge	g	8	17	1	6	2	2	2	3	5	4	19
23	Crabbe, Allen	g	5	16	4	10	0	0	3	6	9	3	14
12	Smith, Brandon	g	0	0	0	0	0	0	0	0	0	1	0
31	Murray, Emerson	g	0	0	0	0	0	0	0	0	0	0	0
34	Thurman, Robert	g	2	2	0	0	0	0	1	2	3	2	4
TEAM													
Totals.....		29	62	6	20	11	14	11	19	30	15	75	16

HOME TEAM: Washington State (11-8, 3-4)

##	Player	Total		3-Ptr		Rebounds		PF	TP	A TO	Blk	Stl	Min
		FG	FGA	FG	FGA	Off	Def						
12	Motum, Brock	f	5	7	0	1	5	6	2	8	10	3	15
40	Enquist, Charlie	f	0	3	0	0	0	0	0	0	0	0	0
00	Capers, Marcus	g	1	2	0	0	4	4	0	2	2	1	6
01	Moore, Reggie	g	0	4	0	1	0	0	0	1	1	0	7
03	Lacy, DaVonte	g	5	10	3	6	1	2	1	4	5	3	14
11	Aden, Faisal	g	9	12	0	0	6	7	1	1	2	4	24
23	Shelton, D.J.	g	1	1	0	0	1	2	2	2	4	1	3
31	Lodwick, Abe	g	4	7	4	7	0	1	1	3	4	2	12
34	Kernich-Drew, Dexter	g	1	3	1	3	0	0	0	0	0	0	2
TEAM													
Totals.....		26	49	8	18	17	22	9	24	33	17	77	16

Officials: Deron White, Tom Nally, Quinton Reece
Technical fouls: California-None. Washington State-None.

Attendance: 5013

Score by Periods	1st	2nd	Total
California	40	35	75
Washington State	34	43	77

GAME 18 Washington State vs. Stanford
1/19/12 7:05 p.m. at Beasley Coliseum (Pullman, Wash)

VISITORS: Stanford (15-4, 5-2)

##	Player	Total		3-Ptr		Rebounds		PF	TP	A TO	Blk	Stl	Min
		FG	FGA	FG	FGA	Off	Def						
03	Brown, Anthony	f	3	8	1	6	0	0	0	0	1	1	2
34	Zimmermann, Andrew	f	0	0	0	0	0	0	0	0	0	0	0
13	Owens, Josh	c	8	8	0	0	3	4	3	4	7	1	19
02	Bright, Aaron	g	2	12	1	8	3	4	1	0	1	0	8
05	Randle, Chasson	g	5	11	5	11	0	0	0	2	2	4	15
22	Mann, Jarrett	g	1	5	0	1	1	2	3	4	7	3	3
24	Huestis, Josh	g	0	3	0	0	3	4	1	3	4	2	3
33	Powell, Dwight	g	2	3	0	0	1	3	1	1	2	5	5
40	Gage, John	g	3	9	1	7	2	2	0	1	1	2	9
TEAM													
Totals.....		24	59	8	33	13	19	13	17	30	21	69	12

HOME TEAM: Washington State (10-8, 2-4)

##	Player	Total		3-Ptr		Rebounds		PF	TP	A TO	Blk	Stl	Min
		FG	FGA	FG	FGA	Off	Def						
12	Motum, Brock	f	6	10	0	1	4	4	2	4	6	3	16
40	Enquist, Charlie	f	0	1	0	0	1	1	1	3	4	0	1
00	Capers, Marcus	g	1	3	0	0	3	4	0	5	5	4	5
01	Moore, Reggie	g	4	6	2	2	3	4	0	2	2	1	13
03	Lacy, DaVonte	g	2	5	1	3	3	3	0	1	1	3	8
11	Aden, Faisal	g	10	17	0	3	13	13	1	4	5	3	33
23	Shelton, D.J.	g	1	2	0	0	0	0	0	3	3	3	2
31	Lodwick, Abe	g	0	2	0	2	0	0	1	2	3	1	0
34	Kernich-Drew, Dexter	g	1	2	1	2	0	0	0	0	0	0	0
TEAM													
Totals.....		25	48	4	13	27	29	1	6	24	30	18	81

Officials: Dick Cartmell, Michael Greenstein, Ken Ditty
Technical fouls: Stanford-None. Washington State-None.

Attendance: 3119

Score by Periods	1st	2nd	Total
Stanford	29	40	69
Washington State	27	54	81

GAME 20 Washington State at Arizona
1/26/12 8:30 p.m. at McKale Center (Tucson, Ariz.)

VISITORS: Washington State (11-9, 3-5)

##	Player	Total		3-Ptr		Rebounds		PF	TP	A TO	Blk	Stl	Min
		FG	FGA	FG	FGA	Off	Def						
12	Motum, Brock	f	4	13	0	3	10	10	0	9	9	3	18
31	Lodwick, Abe	f	2	6	2	5	0	0	2	3	5	0	6
00	Capers, Marcus	g	1	2	0	1	0	0	1	3	4	4	2
01	Moore, Reggie	g	2	6	1	2	4	6	0	1	1	3	9
03	Lacy, DaVonte	g	2	10	0	5	2	3	0	0	0	4	6
05	Dilorio, Will	g	0	1	0	0	1	2	2	0	2	0	1
11	Aden, Faisal	g	3	5	0	0	0	0	0	2	2	0	6
23	Shelton, D.J.	g	1	2	0	0	4	4	2	1	3	2	6
34	Kernich-Drew, Dexter	g	1	2	1	2	0	0	0	0	0	1	3
40	Enquist, Charlie	g	1	1	0	0	0	0	0	1	1	2	0
44	Simon, Patrick	g	1	4	0	3	0	0	0	2	2	0	2
TEAM													
Totals.....		18	52	4	21	21	25	9	23	32	19	61	11

HOME TEAM: Arizona (14-7, 5-3)

#	Player		Total		3-Ptr		Rebounds											
			FG	FGA	FG	FGA	FT	FTA	Off	Def	Tot	PF	TP	A TO	Blk	Stl	Min	
33	Perry, Jesse	f	2	4	0	0	0	0	4	1	5	1	4	3	0	0	1	27
44	Hill, Solomon	f	5	11	3	4	4	4	4	7	11	2	17	3	2	0	1	26
11	Turner, Josiah	g	4	6	0	0	1	5	0	0	0	3	9	4	1	0	1	20
13	Foggson, Nick	g	2	8	1	4	2	2	0	4	4	2	7	2	2	0	2	28
21	Foggy, Kyle	g	8	12	4	6	0	1	0	2	2	2	20	2	0	0	1	24
00	Wise, Dondre		0	0	0	0	0	0	0	0	0	0	0	0	0	0	0	2
03	Parrom, Kevin		3	5	2	4	1	2	0	4	4	2	9	4	0	0	1	23
20	Mayes, Jordin		1	2	0	1	0	0	1	1	2	2	3	1	0	2	1	18
24	Lavender, Brendon		4	8	4	5	2	6	1	1	2	1	14	0	0	0	0	12
30	Chol, Angelo		0	0	0	0	0	0	2	2	3	0	0	3	0	0	0	13
50	Jacobson, Alex		0	1	0	0	0	0	0	0	0	1	0	2	0	0	0	3
51	Crawford, Quinton		0	1	0	1	0	0	0	0	0	0	0	0	0	0	0	1
52	Wiekling, Max		1	1	1	1	0	0	0	0	0	0	3	0	0	0	0	2
55	Mellon, Drew		0	0	0	0	0	0	0	0	0	1	0	0	0	0	0	1
TEAM									3	3	6							
Totals.....			30	59	15	26	10	20	12	25	37	20	85	23	9	0	9	200



GAME 21 Washington State at Arizona State
1/28/12 3 p.m. at Wells Fargo Arena (Tempe, Ariz.)

VISITORS: Washington State (11-10, 3-6)

#	Player		Total		3-Ptr		FT	FTA	Rebounds			PF	TP	A	TO	Blk	Stl	Min
			FG	FGA	FG	FGA			Off	Def	Tot							
12	Motum, Brock	f	13	19	2	4	6	6	4	4	8	3	34	3	6	0	1	38
31	Lodwick, Abe	f	0	1	0	1	0	0	0	1	1	5	0	0	1	0	0	14
00	Capers, Marcus	g	2	4	0	0	1	2	4	2	6	4	5	2	3	1	0	33
01	Moore, Reggie	g	3	10	1	2	2	2	1	2	3	2	9	8	2	0	2	38
03	Lacy, DaVonte	g	3	9	3	8	4	4	0	2	2	2	13	3	2	0	0	31
05	Dilorio, Will		0	0	0	0	0	0	0	1	1	0	0	0	0	0	0	5
23	Shelton, D.J.		1	3	0	0	1	1	0	3	3	5	3	0	1	0	0	21
34	Kernich-Drew, Dexter	1	2	1	1	0	2	0	0	1	1	1	3	0	1	0	0	12
40	Enquist, Charlie		0	0	0	0	0	0	1	1	2	1	0	0	2	0	1	4
44	Simon, Patrick		0	1	0	1	0	0	0	1	1	1	0	0	0	0	0	4
TEAM																		
Totals.....			23	49	7	17	14	17	10	18	28	24	67	16	18	1	4	200

HOME TEAM: Arizona State (7-14, 3-6)

#	Player		Total		3-Ptr		Rebounds											
			FG	FGA	FG	FGA	FT	FTA	Off	Def	Tot	PF	TP	A	TO	Blk	Stl	Min
00	Felix, Carrick	f	6	12	3	7	5	10	2	3	5	2	20	4	2	0	1	38
31	Gilling, Jonathan	f	3	6	1	2	3	4	0	1	1	1	10	7	1	1	1	38
13	Bachynski, Jordan	c	5	5	0	0	1	2	1	1	2	5	11	0	0	2	0	17
02	Colvin, Chris	g	5	13	3	6	3	4	2	4	6	4	16	4	5	0	2	40
15	Creekmur, Chanseg		0	0	0	0	0	0	1	1	2	2	0	1	1	0	2	21
05	Cain, Kyle		3	5	0	0	3	4	0	4	4	2	9	2	2	0	1	23
23	Pateev, Ruslan		2	3	0	0	1	4	1	2	3	1	5	0	5	2	1	23
TEAM											2							
Totals.....			24	44	7	15	16	28	7	18	25	17	71	18	16	5	8	200

Officials: Ruben Ramos, Don McAllister, Tom Wood
Technical fouls: Washington State-None. Arizona State-None.
Attendance: 6224
Score by Periods 1st 2nd Total
Washington State 36 31 67
Arizona State 37 34 71

GAME 23 Washington State vs. UCLA
2/4/12 2 p.m. at Beasley Coliseum (Pullman, Wash.)

VISITORS: UCLA (13-10, 6-5)

#	Player		Total		3-Ptr		FT	FTA	Rebounds			PF	TP	A	TO	Blk	Stl	Min
			FG	FGA	FG	FGA			Off	Def	Tot							
12	Wear, David	f	4	8	1	2	6	7	1	5	6	1	15	1	2	0	1	30
00	Stover, Anthony	c	0	0	0	0	0	0	0	2	2	4	0	0	0	1	0	17
01	Lamb, Tyler	g	2	7	1	3	2	3	0	2	2	3	7	2	2	1	1	30
05	Anderson, Jerime	g	2	7	0	1	1	3	1	3	4	0	5	3	0	0	4	36
11	Jones, Lazerick	g	5	11	2	4	3	7	1	3	4	2	15	4	3	0	1	37
04	Powell, Norman		0	5	0	4	0	0	0	2	2	0	0	1	0	0	1	18
20	Lane, Brendan		1	1	0	0	0	0	0	1	1	1	2	0	0	0	0	10
34	Smith, Joshua		8	9	0	0	3	4	1	4	5	5	19	0	3	2	1	22
TEAM										1	3	4						
Totals.....			22	48	4	14	15	24	5	25	30	16	63	11	10	5	9	200

HOME TEAM: Washington State (12-11, 4-7)

#	Player	Total		3-Ptr		FT	FTA	Rebounds			PF	TP	A	TO	Blk	Stl	Min	
		FG	FGA	FG	FGA			Off	Def	Tot								
12	Motum, Brock	f	9	18	2	4	5	6	3	8	11	3	25	0	3	0	0	40
31	Lodwick, Abe	f	4	6	3	5	0	0	3	4	7	3	11	0	4	0	3	32
00	Capers, Marcus	g	0	3	0	0	0	0	3	4	7	3	0	0	2	0	0	24
01	Moore, Reggie	g	4	8	2	3	2	2	0	2	2	2	12	3	1	0	1	35
03	Lacy, DaVonte	g	0	4	0	4	0	0	0	1	1	2	0	1	1	0	1	21
02	Ladd, Mike		2	8	1	2	5	6	0	3	3	4	10	3	3	0	0	31
23	Shelton, D.J.		0	0	0	0	0	0	0	0	0	0	0	0	0	1	0	3
34	Kernich-Drew, Dexter		0	3	0	2	0	0	0	1	1	1	0	1	0	0	0	9
44	Simon, Patrick		1	3	0	2	0	0	0	0	0	2	2	0	1	0	0	5
TEAM											5							
Totals.....			20	53	8	22	12	14	9	28	37	20	60	8	15	1	5	200

Officials: Jim Giron, Don McAllister, Jeff Ketchu
Technical fouls: UCLA-None. Washington State-None.
Attendance: 4204
Score by Periods 1st 2nd Total
UCLA 29 34 63
Washington State 34 26 60

GAME 22 Washington State vs. USC
2/2/12 7:05 p.m. at Beasley Coliseum (Pullman, Wash.)

VISITORS: USC (6-17, 1-9)

#	Player		Total		3-Ptr		FT	FTA	Rebounds		PF	TP	A	TO	Blk	Stl	Min	
			FG	FGA	FG	FGA			Off	Def								Tot
33	Jackson, Garrett	f	5	11	3	6	2	3	1	3	4	5	15	1	1	1	2	29
31	Blasczyk, James	c	1	2	0	0	0	0	0	2	2	2	2	0	0	0	1	24
03	Moore, Alexis	g	0	4	0	2	0	0	0	1	1	0	0	0	0	0	0	12
10	Jones, Maurice	g	3	9	1	6	0	0	0	3	3	3	7	5	3	0	0	38
25	Wesley, Byron	g	6	12	0	0	0	0	1	4	5	3	12	2	3	0	0	39
02	Allen, Greg		6	12	5	11	0	0	0	2	2	1	17	3	1	0	1	34
20	Strangis, Eric		0	0	0	0	0	0	0	0	0	0	0	0	0	0	0	10
24	Munoz, Daniel		0	0	0	0	0	0	1	0	1	1	0	2	1	0	0	14
TEAM									2		2							
Totals.....			21	50	9	25	2	3	3	17	20	15	53	13	9	1	4	200

HOME TEAM: Washington State (12-10, 4-6)

#	Player	Total		3-Ptr		FT	FTA	Rebounds			PF	TP	A	TO	Blk	Stl	Min	
		FG	FGA	FG	FGA			Off	Def	Tot								
12	Motum, Brock	f	9	11	1	1	7	10	1	7	8	2	26	1	4	0	0	34
31	Lodwick, Abe	f	3	7	3	6	0	0	0	1	1	3	9	1	1	0	0	23
00	Capers, Marcus	g	1	3	0	0	0	0	3	5	8	0	2	2	1	0	0	32
01	Moore, Reggie	g	3	10	0	2	3	5	0	4	4	1	9	6	4	0	0	35
03	Lacy, DaVonte	g	3	6	2	4	0	0	1	0	1	0	8	3	1	1	0	32
02	Ladd, Mike		1	3	0	0	4	4	0	4	4	1	6	1	2	0	1	24
05	Dilorio, Will		0	1	0	0	0	0	1	2	3	0	0	0	0	0	0	8
34	Kernich-Drew, Dexter	0	1	0	1	0	0	0	0	1	1	1	0	0	0	0	0	9
40	Enquist, Charlie		0	0	0	0	0	0	1	0	1	0	0	0	0	0	0	3
TEAM									1	2	3							
Totals.....			20	42	6	14	14	19	8	26	34	8	60	14	13	1	1	200

Officials: Kevin Brill, Michael Eggers, Randy Burkhart
Technical fouls: USC-None. Washington State-None.
Attendance: 4002
Score by Periods 1st 2nd Total
USC 24 29 53
Washington State 30 30 60

GAME 24 Washington State at Oregon State
2/9/12 7 p.m. at Gill Coliseum (Corvallis, Ore.)

VISITORS: Washington State (13-11, 5-7)

#	Player	Total		3-Ptr		FT	FTA	Rebounds			PF	TP	A	TO	Blk	Stl	Min	
		FG	FGA	FG	FGA			Off	Def	Tot								
12	Motum, Brock	f	9	16	0	0	6	7	3	6	9	1	24	0	2	1	2	36
31	Lodwick, Abe	f	3	5	2	4	0	0	0	3	3	4	8	0	0	0	0	16
00	Capers, Marcus	g	5	6	0	0	2	2	3	3	6	3	12	1	4	1	0	33
01	Moore, Reggie	g	2	11	1	5	5	8	0	1	1	2	10	11	2	0	4	38
03	Lacy, DaVonte	g	3	7	3	3	1	2	0	1	1	2	10	1	0	0	0	29
02	Ladd, Mike		1	4	0	0	3	4	0	4	4	4	5	1	1	1	0	18
23	Shelton, D.J.		5	5	0	0	4	4	6	3	9	2	14	0	1	1	0	24
34	Kernich-Drew, Dexter		0	0	0	0	0	0	0	0	0	0	0	0	0	0	1	2
40	Enquist, Charlie		0	0	0	0	0	0	0	0	0	1	0	0	0	0	0	4
TEAM									1									
Totals.....			28	54	6	12	21	27	12	22	34	19	83	14	10	4	7	200



GAME 27 | SATURDAY, FEB. 18 | VS. ARIZONA STATE | BEASLEY COLISEUM | PULLMAN, WASH.

GAME 25 Washington State at Oregon
 2/11/12 3:05 p.m. at Matthew Knight Arena (Eugene, Ore.)

VISITORS: Washington State (13-12, 5-8)																		
##	Player	Total		3-Ptr		Rebounds			PF	TP	A	TO	Blk	Stl	Min			
		FG	FGA	FG	FGA	FT	FTA	Off								Def	Tot	
12	Motum, Brock	f	6	12	1	2	4	7	2	3	5	4	17	5	2	0	34	
31	Lodwick, Abe	f	2	5	2	4	0	0	2	2	4	5	6	1	2	0	21	
00	Capers, Marcus	g	3	5	0	0	3	4	4	0	4	3	9	1	2	0	3	25
01	Moore, Reggie	g	5	13	2	7	0	0	0	1	1	3	12	6	2	1	1	38
03	Lacy, DaVonte	g	2	7	2	4	0	0	1	1	2	0	6	2	1	0	1	31
02	Ladd, Mike		6	8	1	2	0	0	0	2	2	1	13	0	1	0	1	25
23	Shelton, D.J.		3	4	0	0	0	0	2	4	6	3	6	0	0	2	0	25
34	Kernich-Drew, Dexter	0	0	0	0	0	0	0	0	0	0	0	0	0	0	0	0	1
TEAM		1 1																
Totals.....		27	54	8	19	7	11	11	14	25	19	69	15	10	3	6	200	

HOME TEAM: Oregon (18-7, 9-4)																		
##	Player	Total		3-Ptr		Rebounds			PF	TP	A	TO	Blk	Stl	Min			
		FG	FGA	FG	FGA	FT	FTA	Off								Def	Tot	
23	Jacob, Jeremy	f	2	2	0	0	0	0	1	1	1	4	0	0	1	16		
25	Singler, E.J.	f	8	12	4	6	3	3	3	3	6	3	23	3	1	0	33	
55	Woods, Tony	c	0	1	0	0	2	4	0	3	3	2	2	0	2	0	23	
03	Sim, Garrett	g	5	11	4	7	2	2	0	0	0	2	16	3	3	0	32	
34	Joseph, Devoe	g	6	11	2	5	2	2	1	1	2	2	16	4	3	0	35	
05	Ashaolu, Olu		2	2	0	0	1	1	0	1	1	1	5	1	0	0	12	
10	Loyd, Johnathan		0	0	0	0	0	0	0	0	0	0	3	1	0	1	13	
31	Nared, Tyrone		0	1	0	0	0	0	0	1	1	1	0	0	0	0	10	
33	Emory, Carlos		3	7	1	2	5	6	3	5	8	2	12	2	1	0	0	26
TEAM									1	2	3							
Totals.....		26	47	11	20	15	18	8	17	25	14	78	16	11	3	3	200	

Officials: Ken Ditty, Chris Rastatter, Deron White
 Technical fouls: Washington State-None. Oregon-None.
 Attendance: 10071
 Score by Periods 1st 2nd Total
 Washington State 33 36 69
 Oregon 36 42 78

GAME 26 Washington State vs. Arizona
 2/16/12 6 p.m. at Beasley Coliseum (Pullman, Wash.)

VISITORS: Arizona (19-8, 10-4)																		
##	Player	Total		3-Ptr		Rebounds			PF	TP	A	TO	Blk	Stl	Min			
		FG	FGA	FG	FGA	FT	FTA	Off								Def	Tot	
33	Perry, Jesse	f	5	9	0	1	4	4	2	0	2	4	14	1	1	0	21	
44	Hill, Solomon	f	5	7	1	2	0	0	0	5	5	2	11	5	4	1	39	
11	Turner, Josiah	g	3	5	1	1	1	2	1	2	3	2	8	2	3	0	26	
13	Johnson, Nick	g	1	5	0	3	0	1	1	3	4	3	2	3	2	1	30	
21	Fogg, Kyle	g	5	12	2	5	4	5	2	8	10	2	16	3	1	0	39	
14	Natyazhko, Kyril		0	0	0	0	0	0	0	0	0	0	0	0	0	0	2	
24	Lavender, Brendon		5	8	5	7	2	2	0	0	0	1	17	2	1	0	25	
30	Chol, Angelo		2	4	0	0	4	7	3	1	4	4	8	0	0	0	18	
TEAM		1 1																
Totals.....		26	50	9	19	15	21	9	20	29	18	76	16	12	2	2	200	

HOME TEAM: Washington State (13-13, 5-9)																		
##	Player	Total		3-Ptr		FT	FTA	Rebounds			PF	TP	A	TO	Blk	Stl	Min	
		FG	FGA	FG	FGA			Off	Def	Tot								
12	Motum, Brock	f	8	14	2	5	10	18	1	4	5	2	28	2	5	0	0	35
31	Lodwick, Abe	f	2	7	2	5	0	0	1	4	5	2	6	0	0	0	0	24
00	Capers, Marcus	g	3	4	0	0	0	0	3	4	7	5	6	2	0	1	0	28
01	Moore, Reggie	g	8	13	1	3	4	4	1	1	2	2	21	4	1	1	2	33
03	Lacy, DaVonte	g	1	5	1	5	0	0	0	1	1	1	3	2	1	0	1	32
02	Ladd, Mike		2	3	1	2	0	0	1	2	3	5	5	0	3	0	0	20
23	Shelton, D.J.		1	3	0	0	0	0	0	2	2	3	2	1	2	2	0	22
34	Kernich-Drew, Dexter		0	1	0	1	1	1	2	0	1	1	1	1	0	0	0	0
6	TEAM								2	2								
	Totals.....		25	50	7	21	15	24	7	21	28	21	72	11	12	4	3	200

Officials: Verne Harris, Bobby McRoy, Randy Burkhart
 Technical fouls: Arizona-None. Washington State-None.
 Attendance: 3616
 Score by Periods 1st 2nd Total
 Arizona 40 36 76
 Washington State 39 33 72